

CONNECTION EXAMPLES

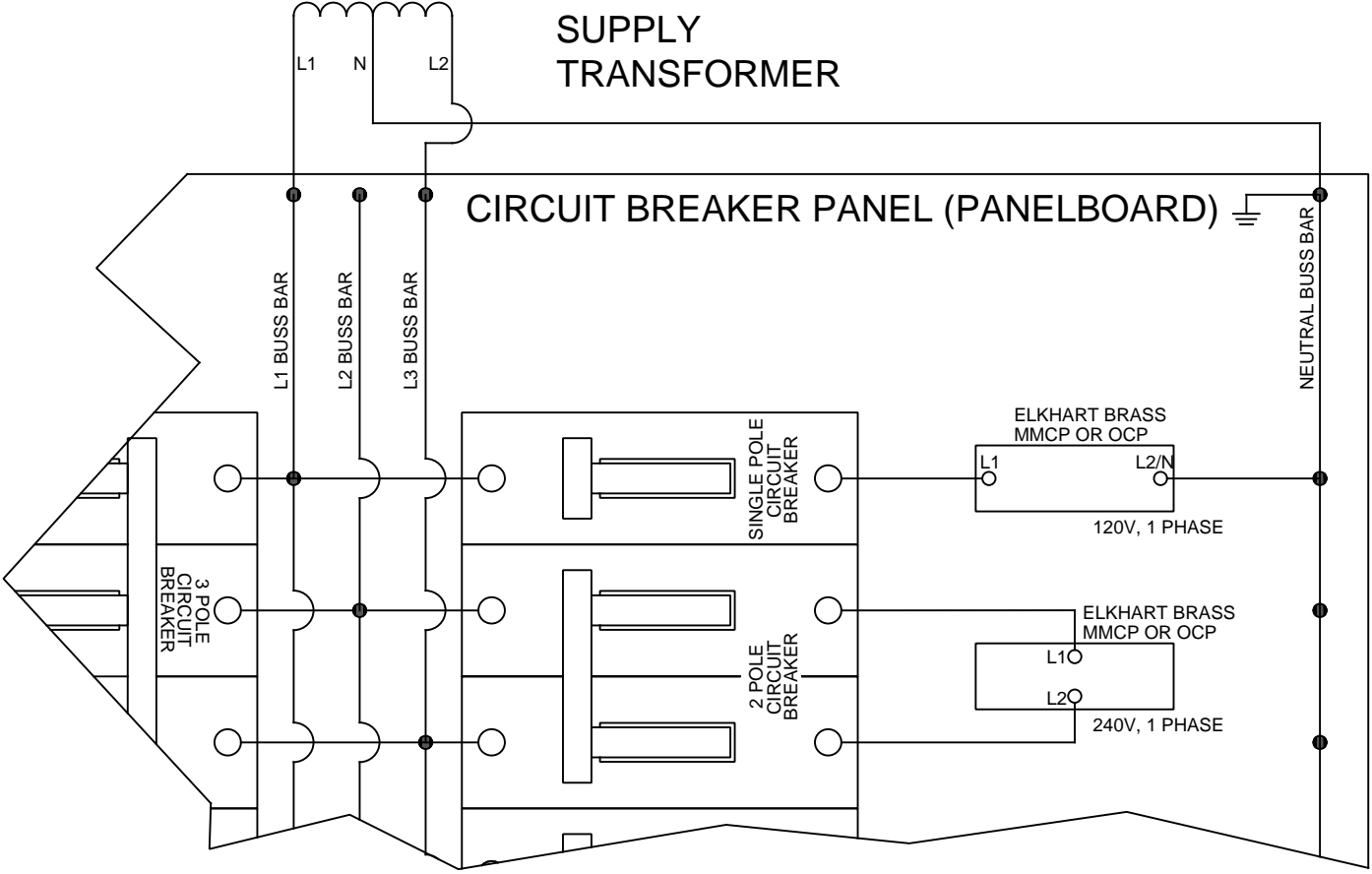
Electricity is used in different voltages around the world. Elkhart Brass equipment is very flexible, and our standard equipment can operate on many different power systems. It can also be customized to work on any power system.

The attached pages are connection examples showing Elkhart Brass equipment connected to various power systems that are common across the globe.

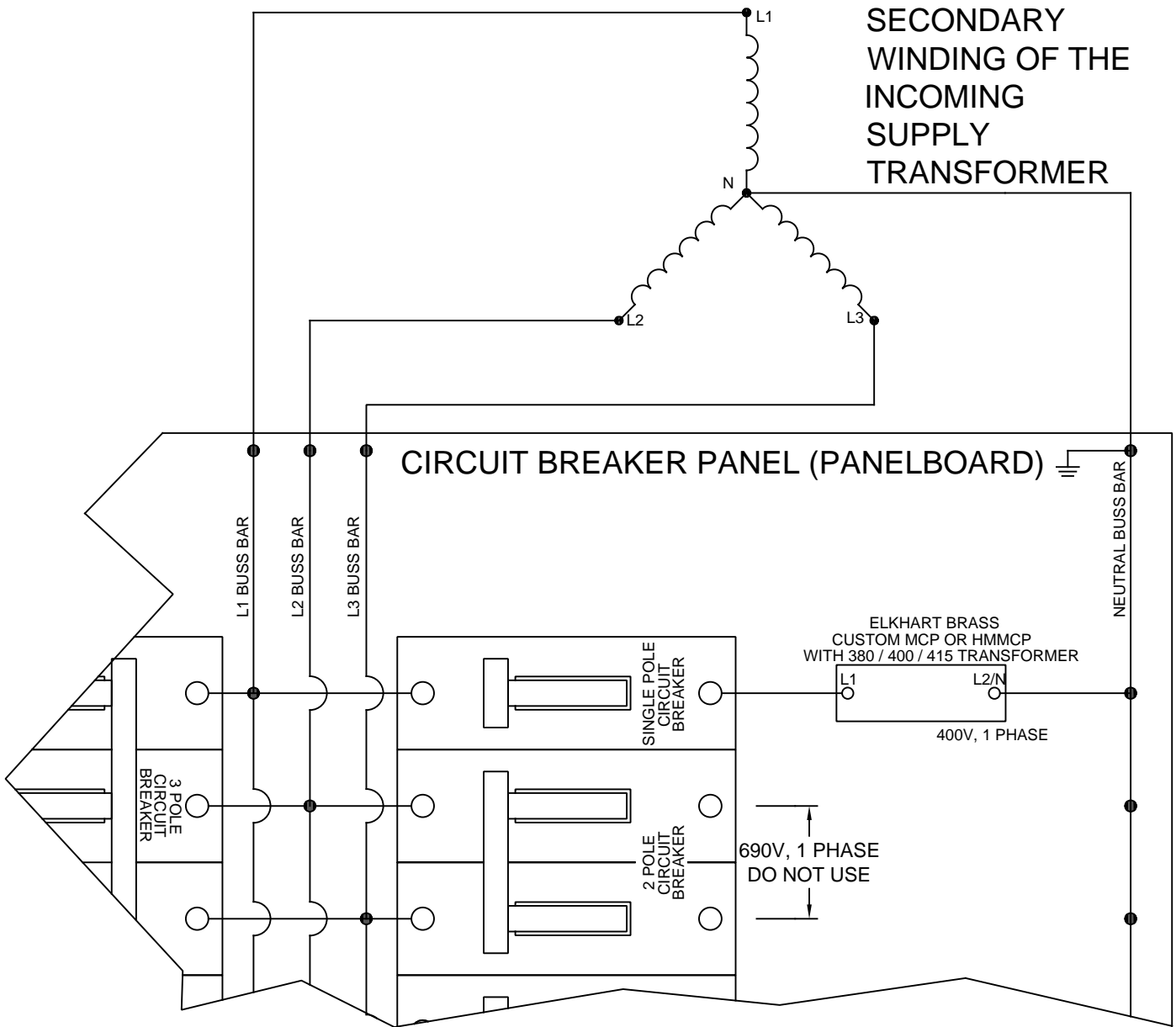
INDEX	PAGE
240/120 single phase	2
950Y/550 three phase	consult engineering
690Y/400 three phase	3
660Y/380 three phase	4
600Y/347 three phase	5
575Y/330 three phase	consult engineering
500Y/290 three phase	consult engineering
480Y/277 three phase	6
460Y/266 three phase	7
440Y/254 three phase	8
415Y/240 three phase	9
400Y/230 three phase	10
380Y/220 three phase	11
260Y/150 three phase	consult engineering
220Y/127 three phase	12
208Y/120 three phase	13
200Y/115 three phase	14
190Y/110 three phase	15
Any single voltage supplied by a Wye transformer	16
Any single voltage supplied by a Delta transformer	17

SINGLE PHASE 240/120

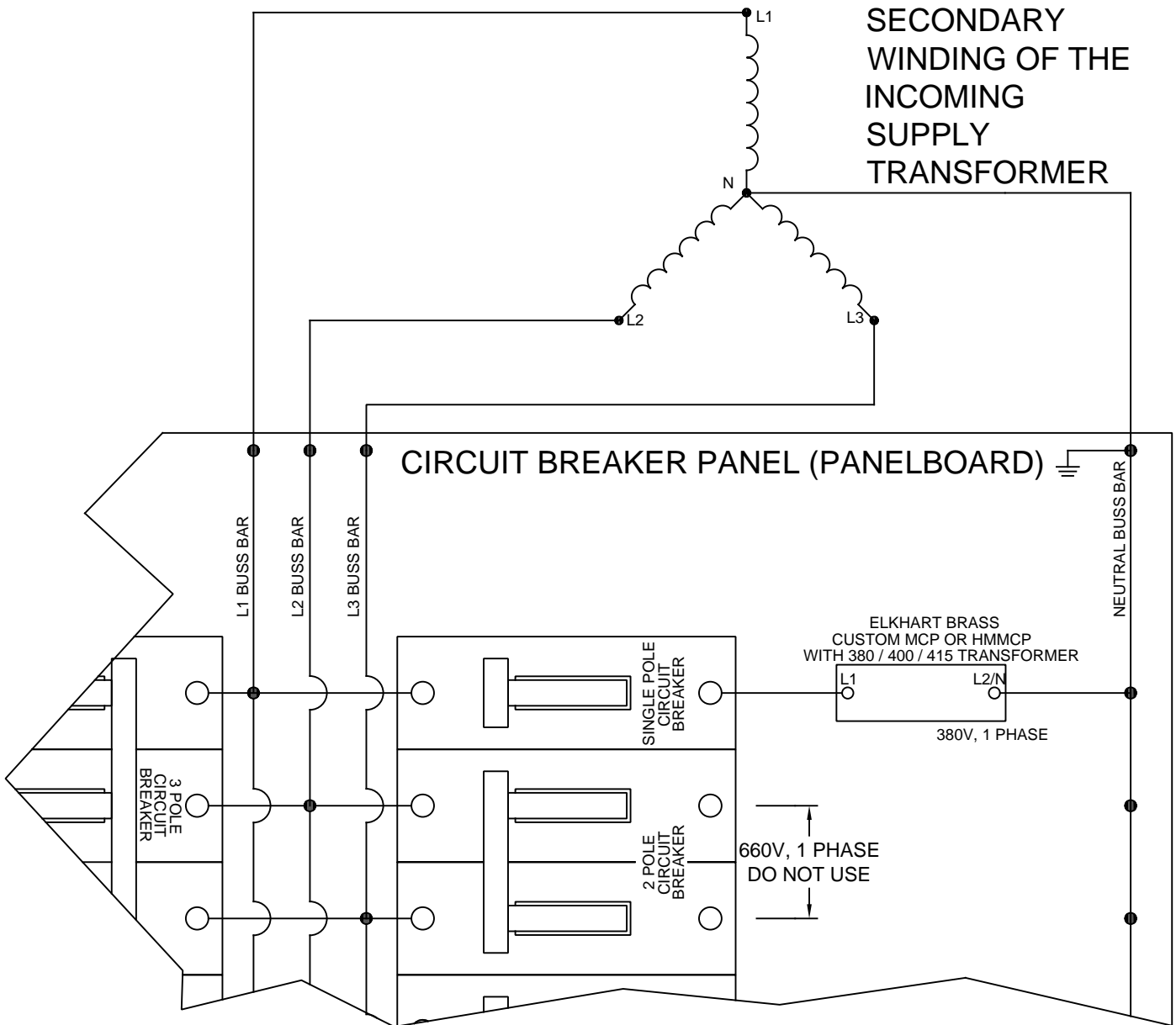
SECONDARY
WINDING OF THE
INCOMING
SUPPLY
TRANSFORMER



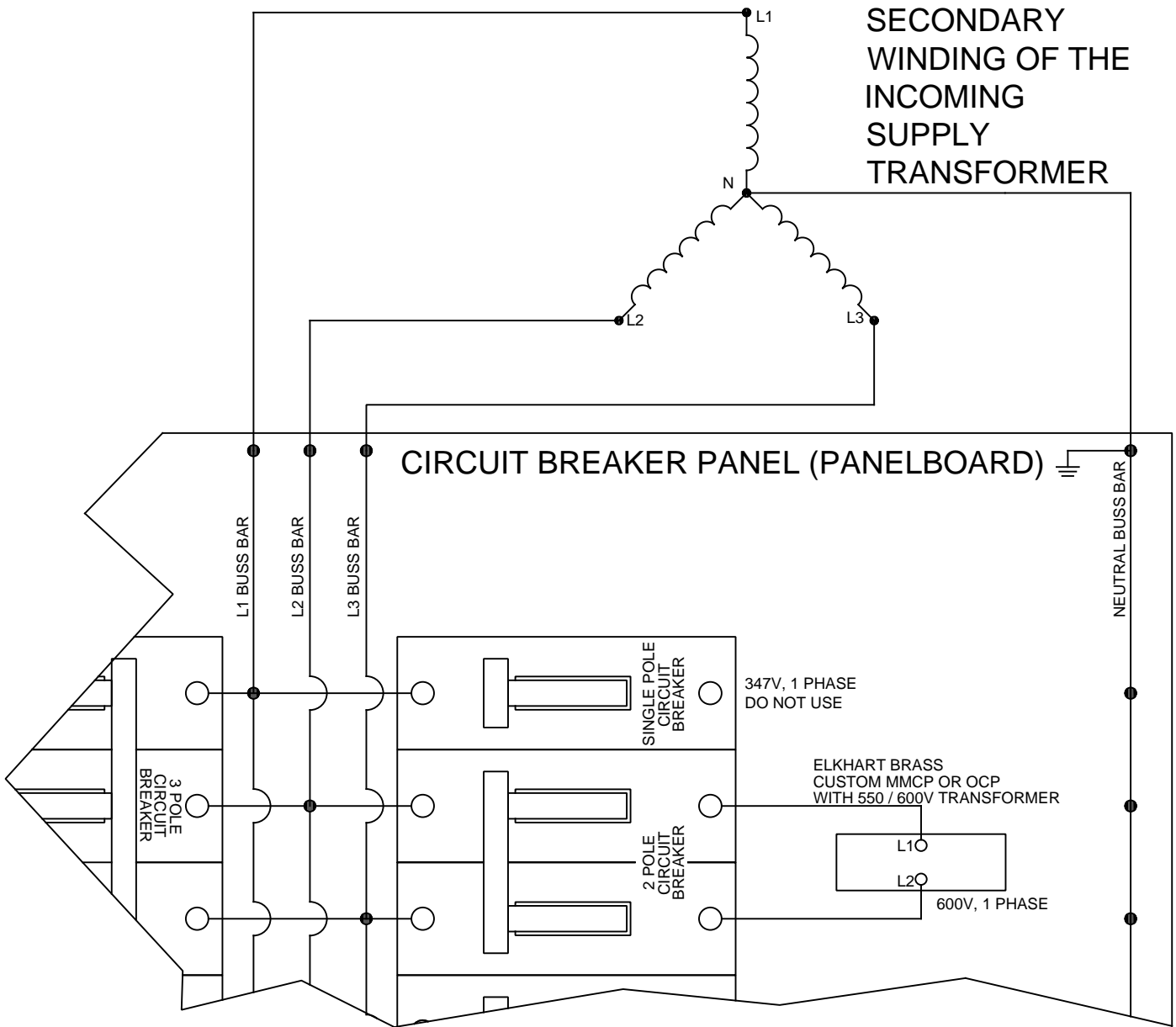
690Y/400



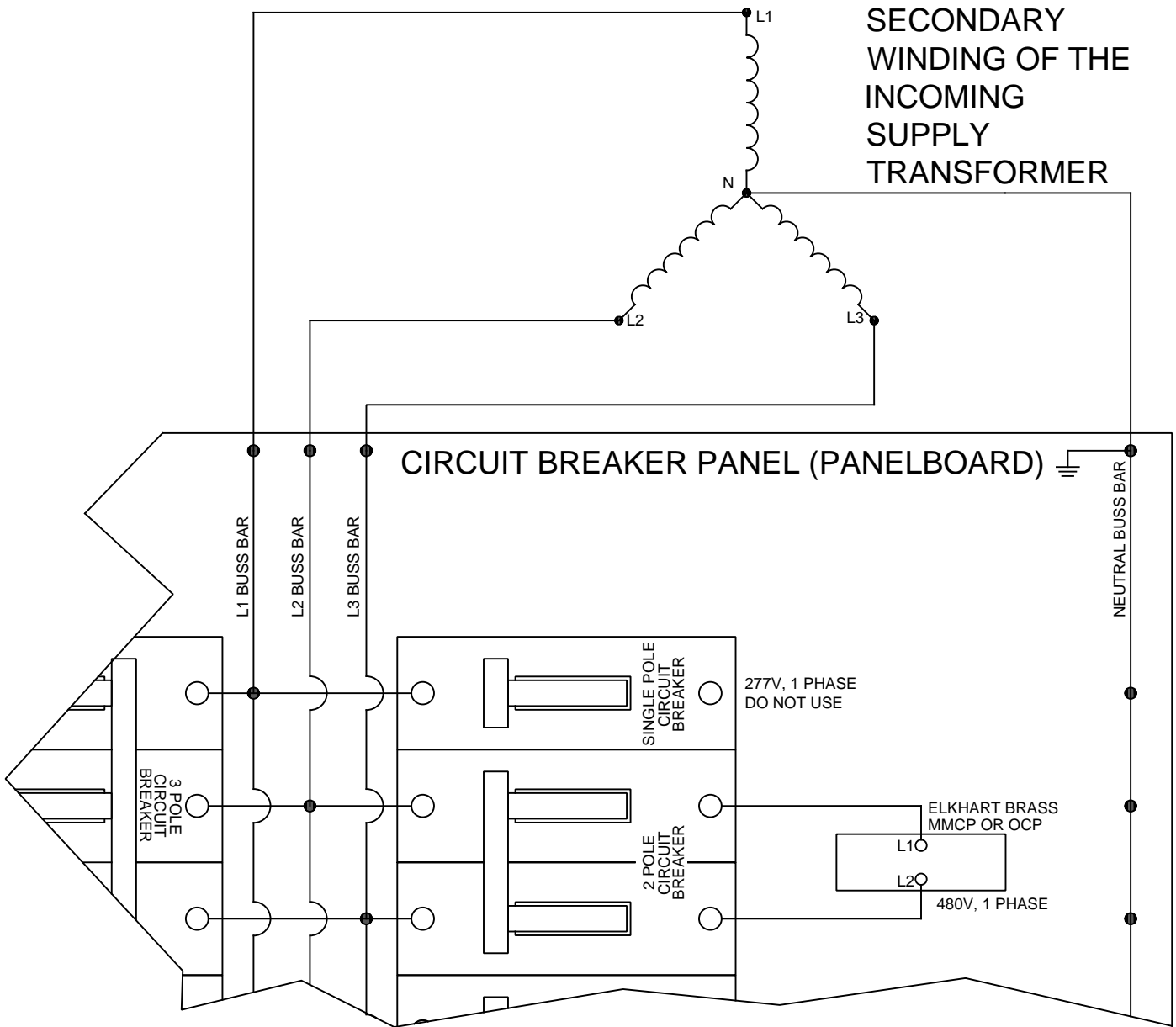
660Y/380



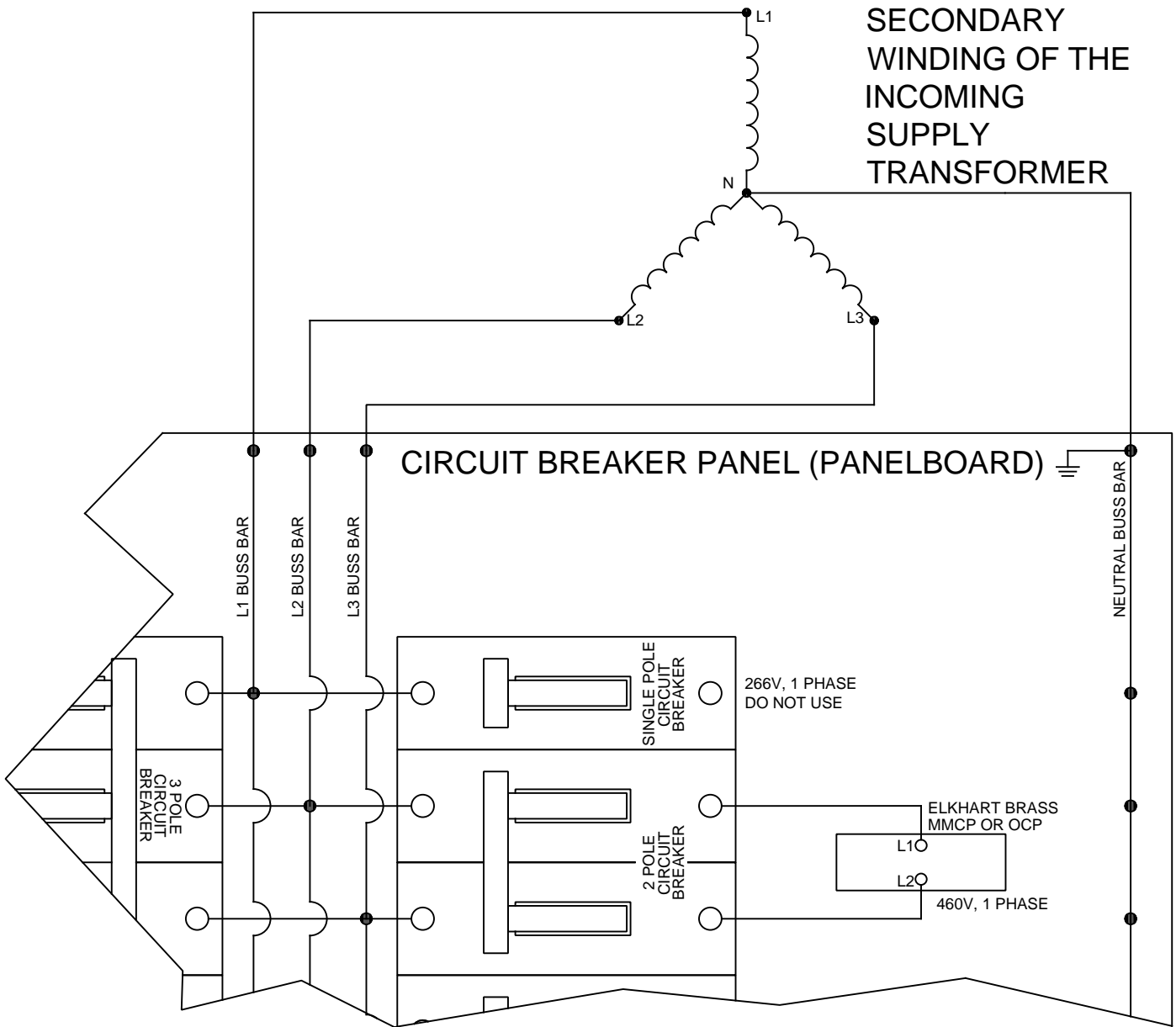
600Y/347



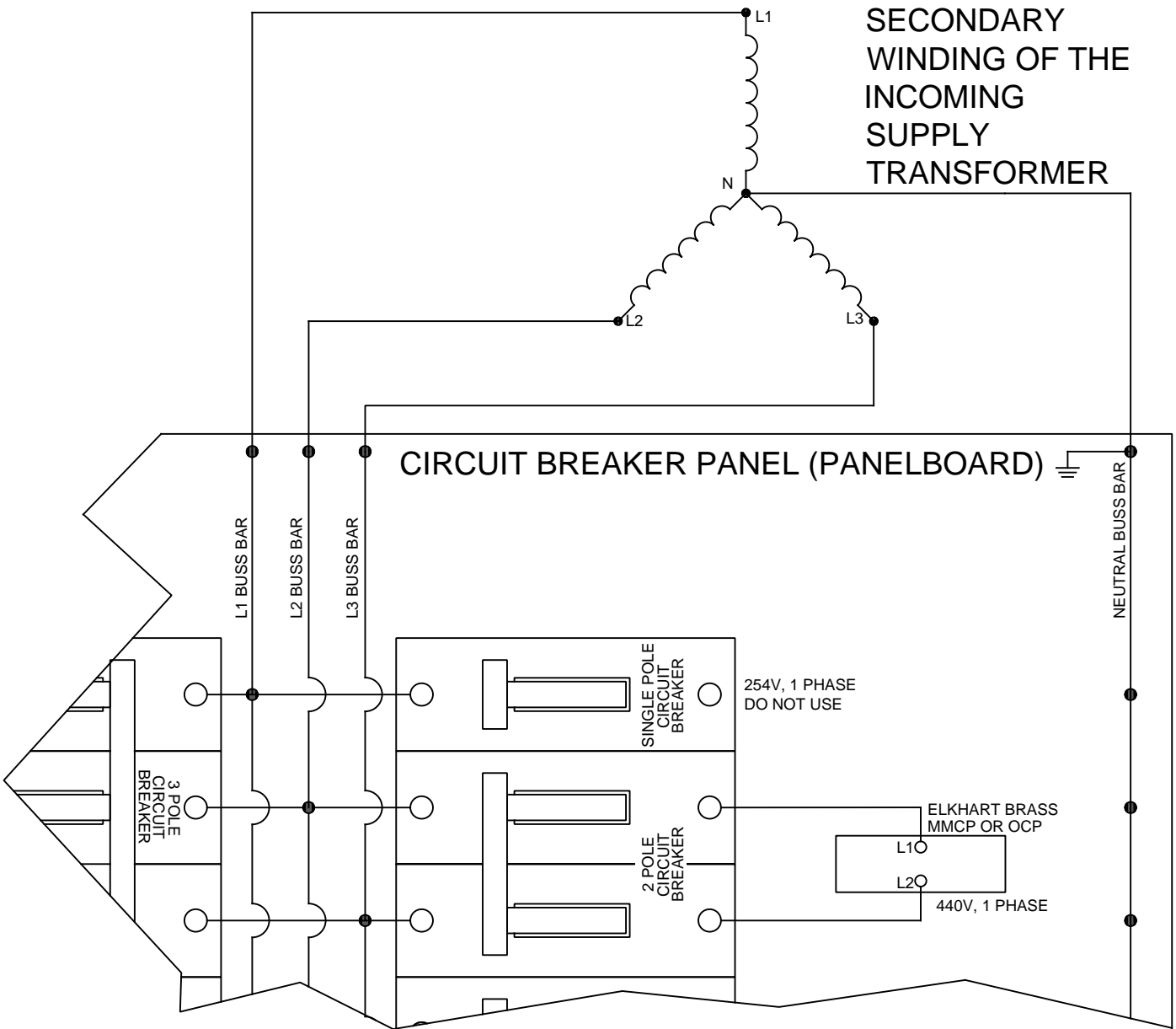
480Y/277



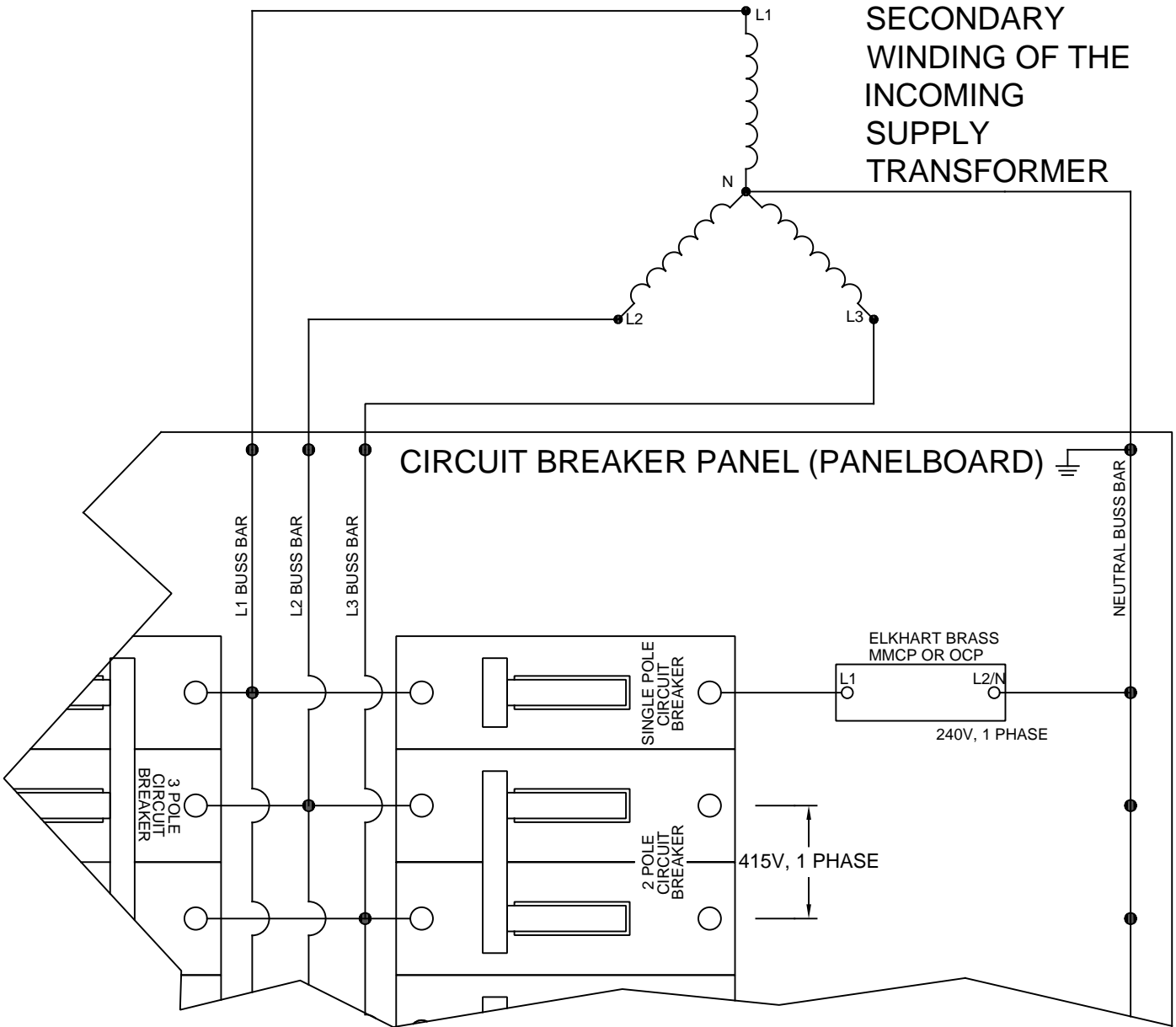
460Y/266



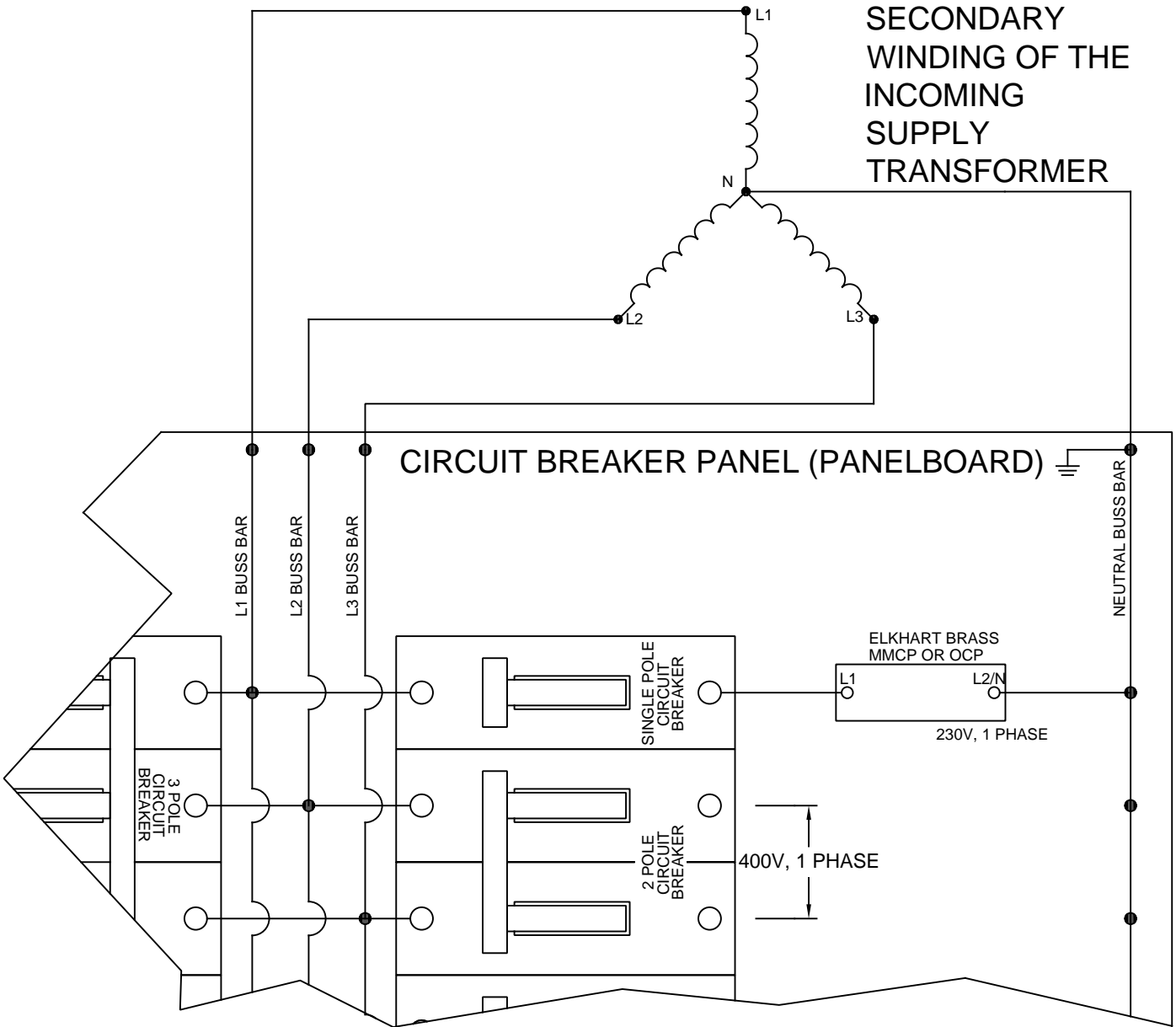
440Y/254



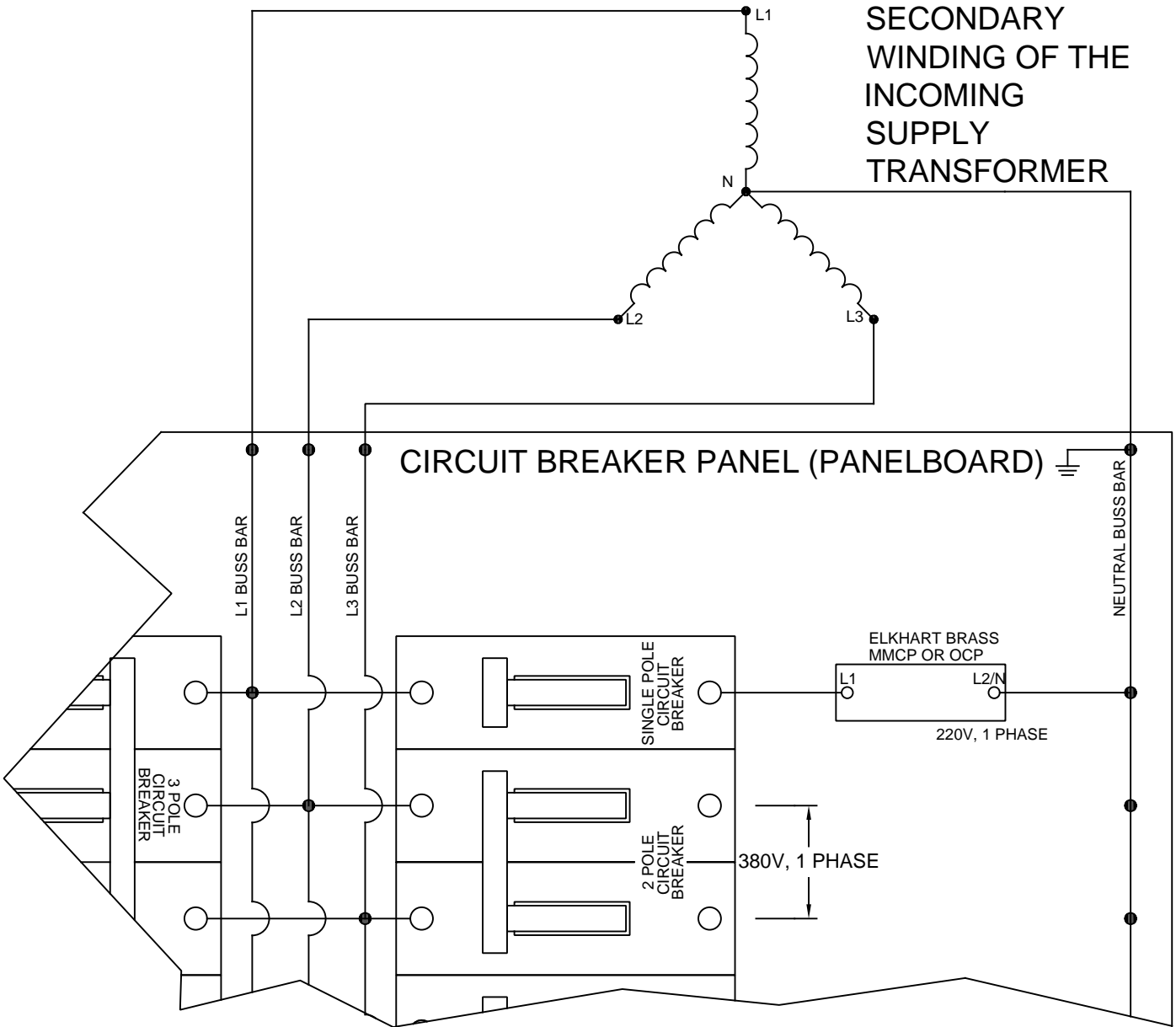
415Y/240



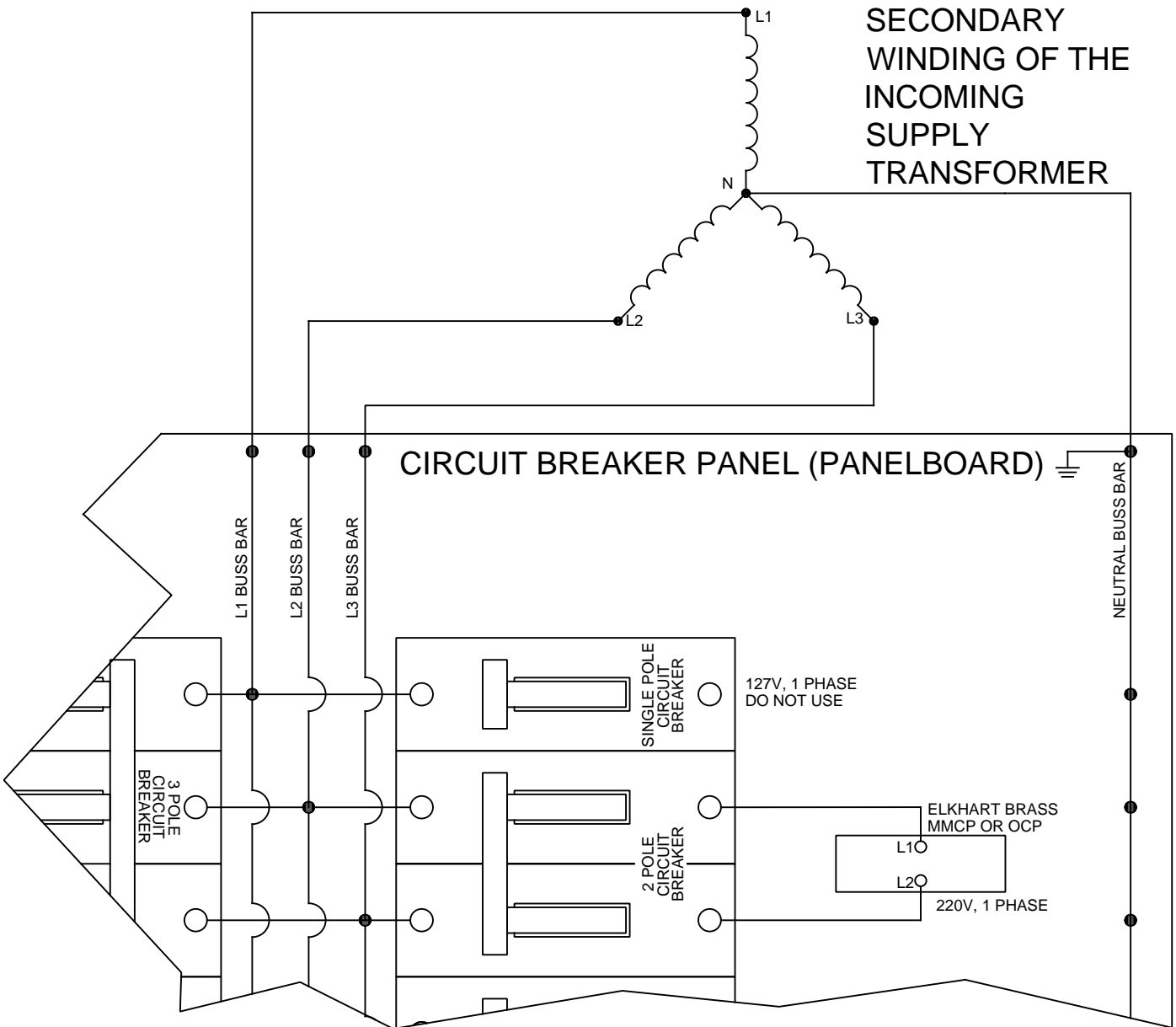
400Y/230



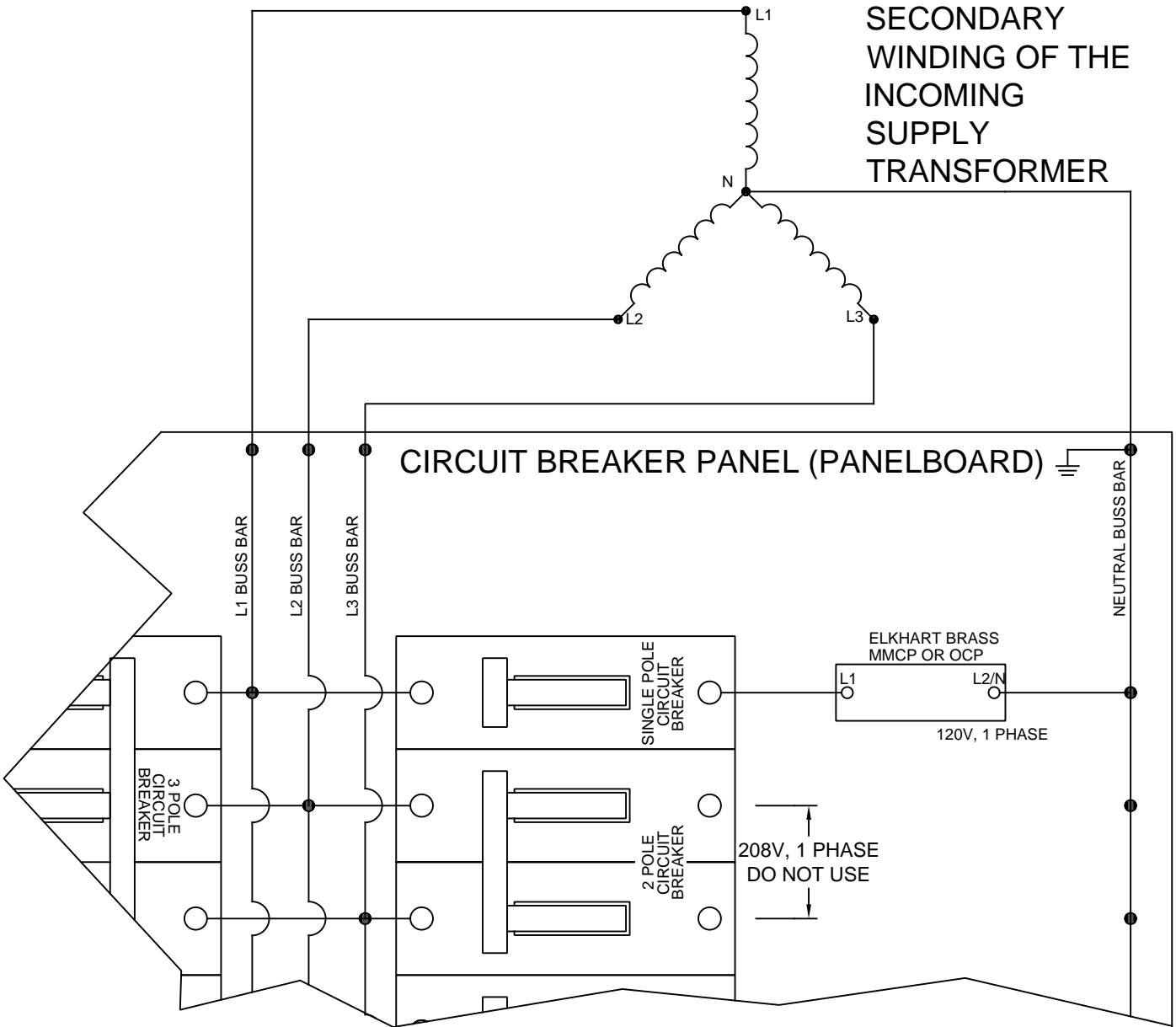
380Y/220



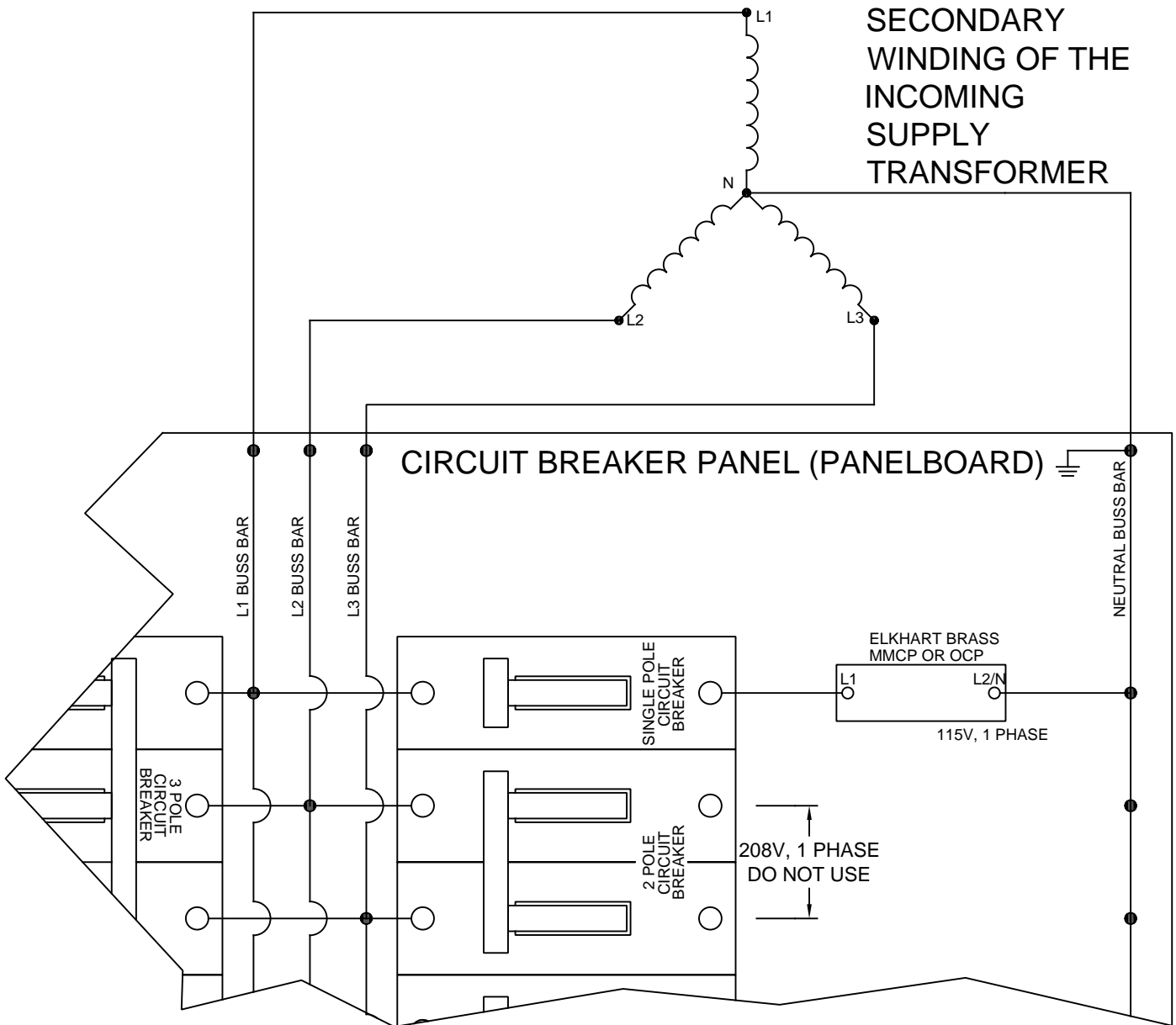
220Y/127



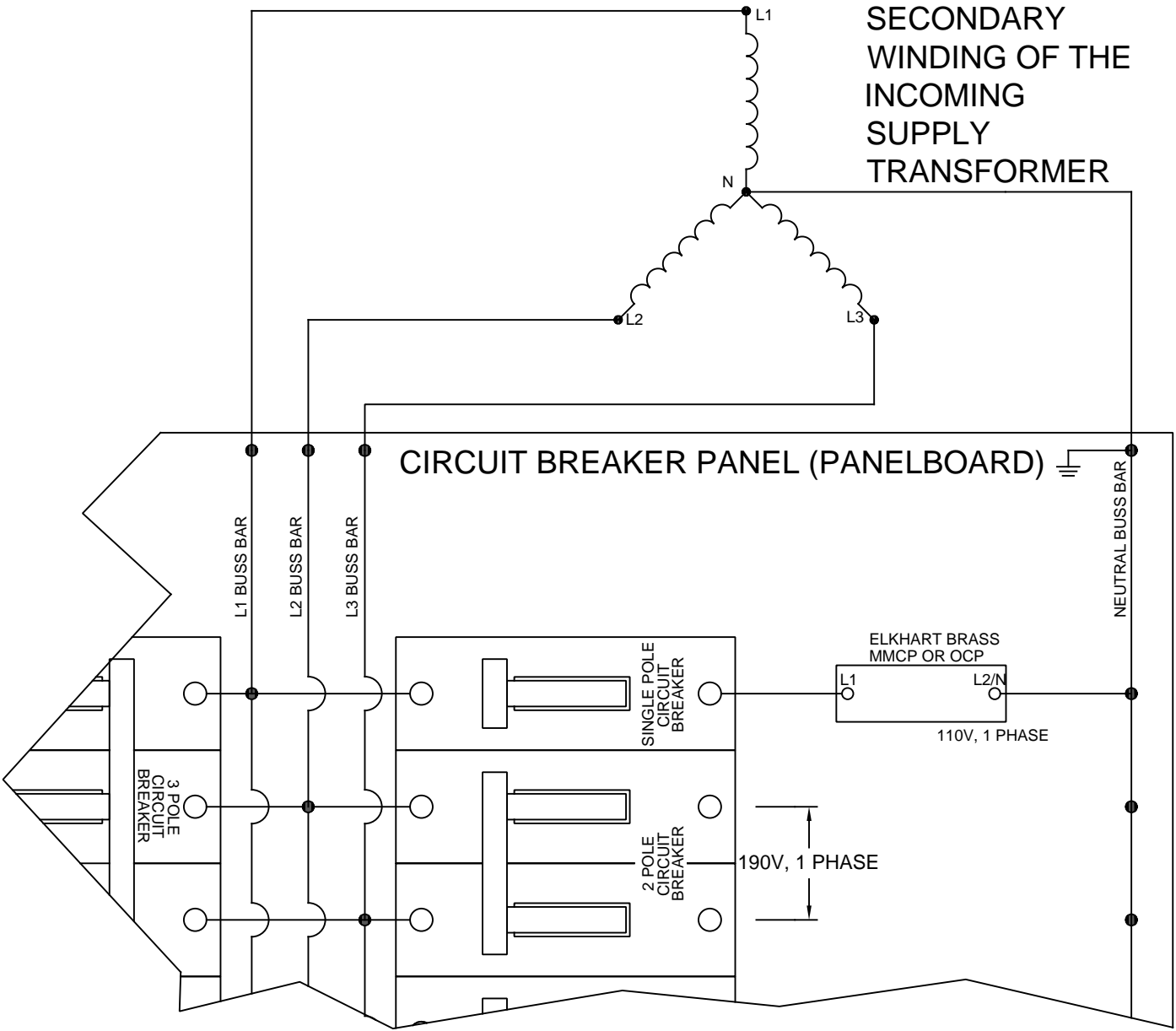
208Y/120



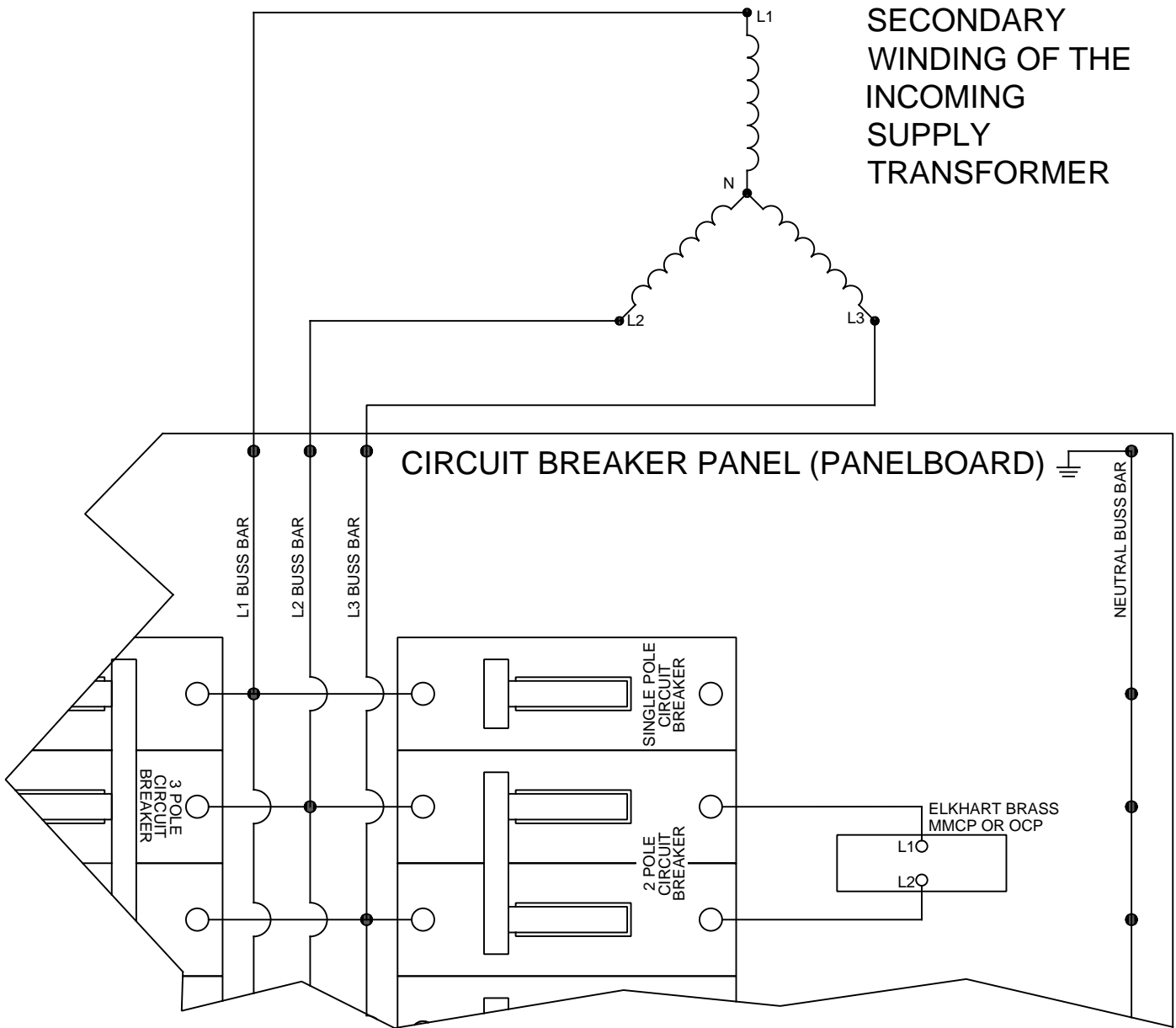
200Y/115



190Y/110



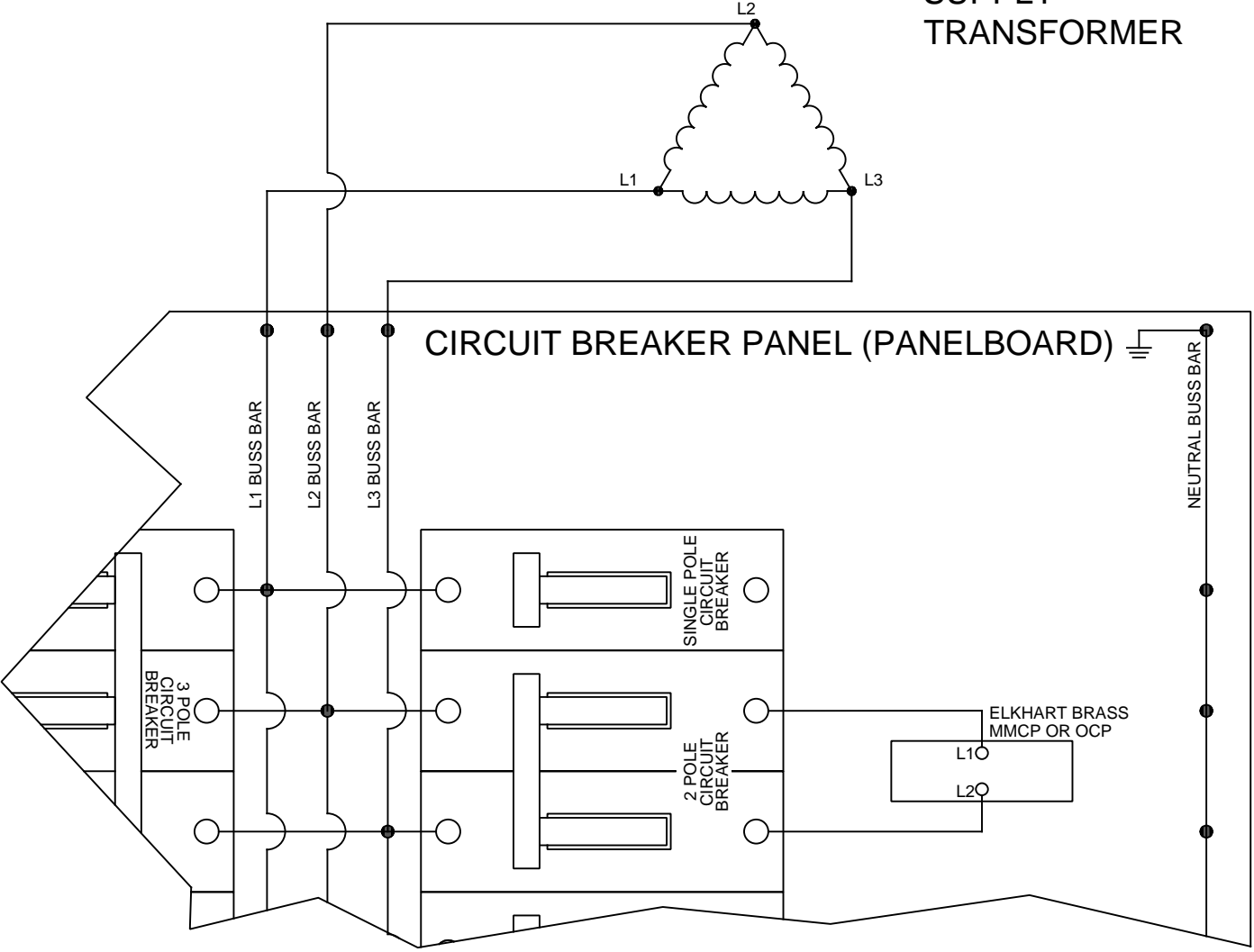
ANY WYE TRANSFORMER WITH AN UNUSED NEUTRAL



VOLTAGE SUPPLIED MUST BE WITHIN THE ACCEPTABLE RANGE FOR THE PANEL

ANY DELTA TRANSFORMER

SECONDARY
WINDING OF THE
INCOMING
SUPPLY
TRANSFORMER



VOLTAGE SUPPLIED MUST BE
WITHIN THE ACCEPTABLE RANGE
FOR THE PANEL