



**ELKHART BRASS MFG. CO., INC.**

1302 WEST BEARDSLEY AVENUE • P.O. BOX 1127 • ELKHART IN 46515 • (574) 295-8330 • FAX (574) 293-9914

## Operating and Maintenance Instructions



### Hydro-Chem<sup>®</sup> Flex

Hydro-Chem<sup>®</sup> powder technology of Williams Fire & Hazard Control with Flex variable smooth bore technology of Elkhart Brass.

Catalog Number: HC-750-FLX

Part Number: 00090001

98320000 – REV. REL

## Table of Contents

I. Product Safety Information.....	3
II. Hydro-Chem <sup>®</sup> Flex Operation .....	4
A. Stream Adjustment .....	4
B. Water/Foam Settings .....	4
C. Dry Chemical Settings.....	4
III. Hydro-Chem <sup>®</sup> Flex Maintenance .....	5
A. Inspections .....	5
B. Maintenance After Use .....	5
IV. Hydro-Chem <sup>®</sup> Flex Parts Drawing.....	6

# I. PRODUCT SAFETY INFORMATION



## **Important:**

Before installing and operating this equipment, read & study this manual thoroughly. Proper installation is essential to safe operation. In addition, the following points should be adhered to in order to ensure the safety of equipment and personnel:

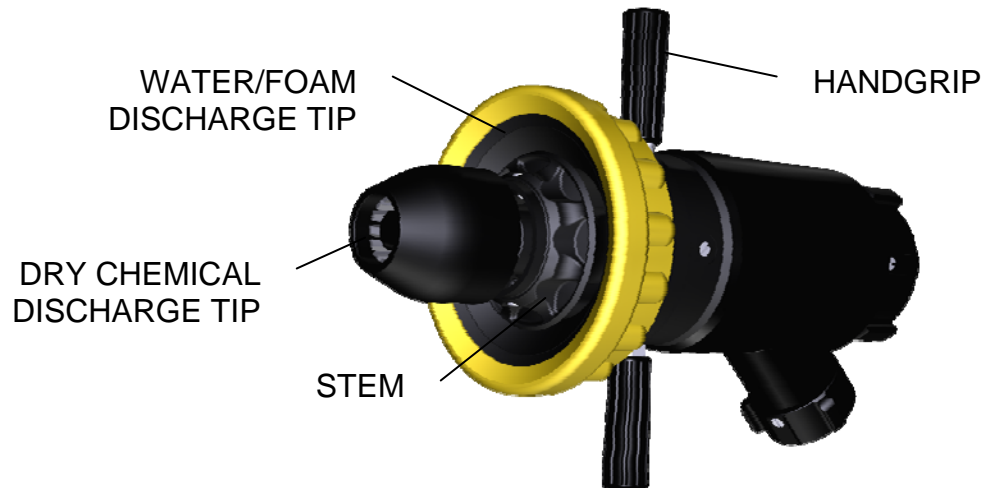
- All personnel who may be expected to use this equipment must be thoroughly trained in its safe and proper use.
- Before flowing this device, check that all personnel (fire service and civilian) are out of the stream path. Also, check to make sure stream direction will not cause avoidable property damage.
- Become thoroughly familiar with the hydraulic characteristics of this equipment, and the pumping system used to supply it. To produce effective fire streams operating personnel must be properly trained.
- Open water valve supplying this equipment slowly, so that piping and hose lines fill slowly, thus preventing possible water hammer occurrence.
- After each use, and on a scheduled basis, inspect equipment per instructions in [section III](#).
- The maximum allowable water pressure for this nozzle is 150 psi.
- Follow dry chemical manufacturer recommendations for operations with any dry chemical agent.



## **Important:**

Open and close the supply valves slowly to avoid creating pressure spikes. Continually creating pressure spikes may compromise the integrity of the nozzle. Never intentionally cause water hammer or pressure spikes.

## II. HYDRO-CHEM<sup>®</sup> FLEX OPERATION



### A. Stream Adjustment

The water/foam discharge tip portion of the nozzle can be turned easily by grasping the handgrips. Rotating per the arrows marked on label will achieve straight stream and fog patterns. The adjustment of the stream can be accomplished without shutting the nozzle down.

### B. Water/Foam Settings

The standard operating pressure for water/foam is 75 psi at the nozzle. The Hydro-Chem<sup>®</sup> Flex nozzle has three water/foam settings and a flush setting. A detent has been utilized to indicate each position. Rotating the stem clockwise from the inlet end of the nozzle will increase the flow all the way to the flush position shown in the picture while rotating the stem in the opposite direction will decrease the flow. The nozzle must be shut down before changing the flow setting.



<b>SYMBOL</b>	<b>DESCRIPTION</b>
	FLUSH
	750 GPM @ 75 PSI (2900 LPM @ 5 bar)
	500 GPM @ 75 PSI (2000 LPM @ 5 bar)
	300 GPM @ 75 PSI (1150 LPM @ 5 bar)

### C. Dry Chemical Settings

The standard operating pressure for dry chemical/air is 150 psi at the nozzle. The discharge size of the nozzle can be adjusted by simply rotating the dry chemical discharge tip of the nozzle. Rotating the tip in the direction indicated by the arrows will achieve the largest discharge setting of 20 lbs/s (9 kg/s) and the smallest discharge setting of 10 lbs/s (4.5 kg/s). If it is desirable to have a dry chemical shut-off the nozzle, the HC-150-A shut-off is designed to attach directly to the air inlet of the nozzle. A detent has been utilized to indicate each discharge position. The nozzle must be shut down before changing this setting.

### III. HYDRO-CHEM<sup>®</sup> FLEX MAINTENANCE

The following maintenance procedures should be followed in order to reduce the possibility of field difficulty or failure.

#### A. Inspections

Weekly visual inspections and monthly operational checks will promote proper nozzle function. These inspections may be done daily in busy companies. All nozzles should be flow tested before entering any hazardous environment to ensure equipment is operating properly.

#### B. Maintenance After Use

The nozzle should be flushed thoroughly after every use. This can be done by flowing a clean water source through the nozzle. The internal passageway of the nozzle should also be visually inspected for possible damage caused by foreign objects carried by the water through the nozzle. Periodic removal of dry chemical from the adjustable center barrel is recommended. Follow dry chemical manufacturer recommendations for maintenance and cleaning of the dry chemical agent portion of the nozzle.

The dry chemical discharge tip and stem portions of the nozzle rotate via a cam and slot mechanism. If these parts become difficult to turn, remove the detent screws, coil springs and detent balls and slide apart. Clean all parts and surfaces including the cam slots. Lubricate the cam slot with Engineered Custom Lubricants #0025 Teflon Grease or equivalent. Use lubricant sparingly. Excess grease will attract dirt and grit and can cause interference between close fitting parts. Reassemble and check for proper operation.

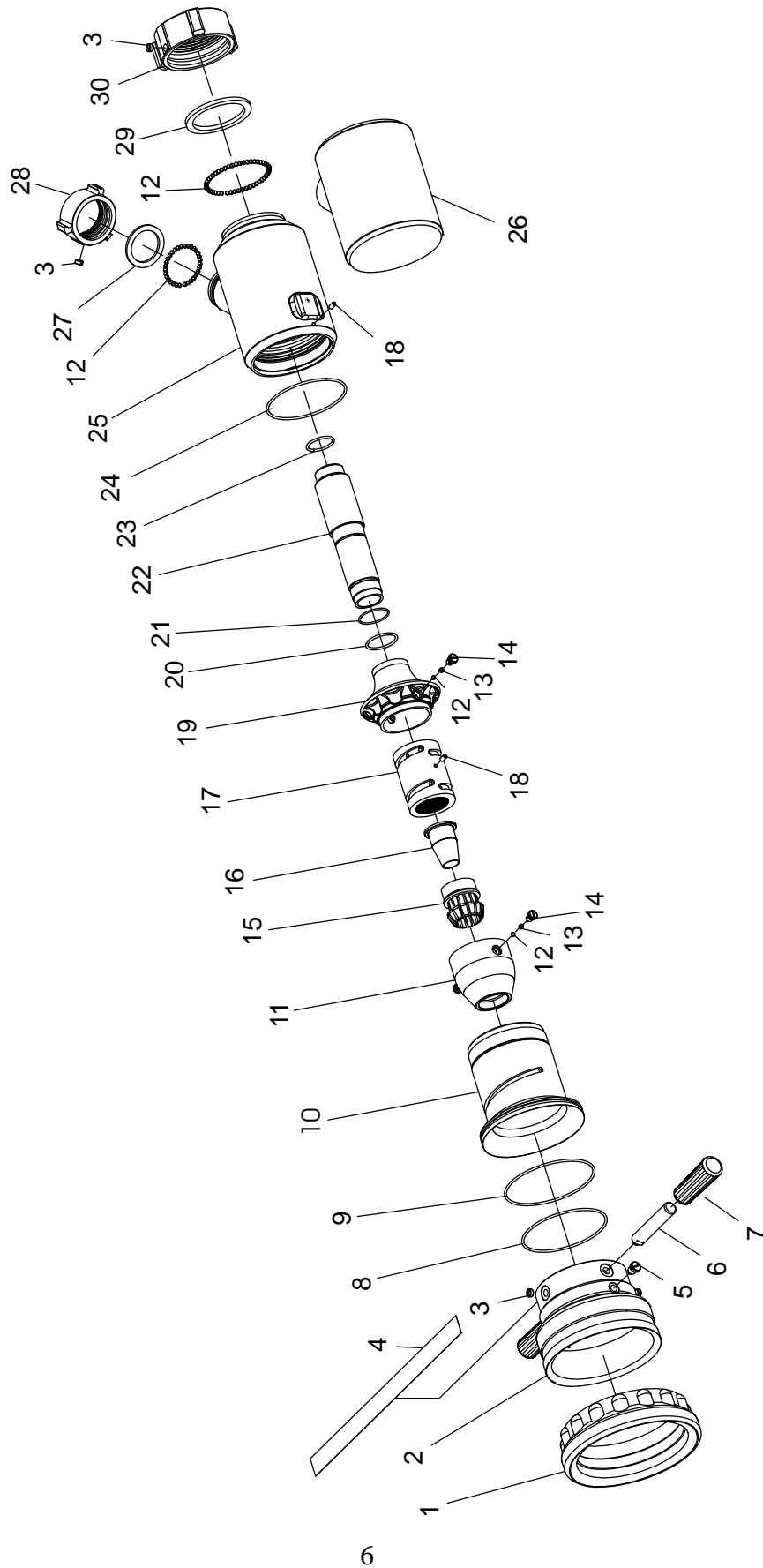


#### **Important:**

If there is a question regarding any necessary repair or damage issue, contact Elkhart Brass for assistance.

Phone #: 800-346-0250  
Email: [info@elkhartbrass.com](mailto:info@elkhartbrass.com)

# IV. HYDRO-CHEM<sup>®</sup> FLEX PARTS DRAWING



## MANUAL (HC-750-FLX)

INDEX #	PART #	QTY	DESCRIPTION
1	33665000	1	Bumper - Yellow
2	66434007	1	Tip - Nozzle
3	63674000	4	Slotted Set Screw (Nylon)
4	44628500	1	Label - Identification
5	65078001	1	Drive Screw
6	36020001	2	Handle
7	33626000	2	Handgrip (Yellow)
8	57503000	1	O-Ring
9	57447000	1	O-Ring
10	17163007	1	Body - Nozzle Tip
11	66433007	1	Tip - Nozzle Dry Chem
12	15018000	89	Ball - .187 S/S
13	65706000	4	Spring - Coil
14	65067001	4	Screw - Detent
15	18118000	1	Adjustable Center Barrel
16	18462000	1	Compressible Bore
17	63910007	1	Sleeve - Adjusting
18	63691000	2	Screw - Set SS
19	69077007	1	Stem - Nozzle
20	57394000	1	O-Ring
21	57521000	1	O-Ring
22	67199001	1	Tube - Stem
23	57335000	1	O-Ring
24	57436000	1	O-Ring
25	17197007	1	Body - Nozzle
26	33855000	1	Guard - Body (Black)
27	33074000	1	Gasket - Rubber (1.5")
28	63068007	1	Base - Swivel (1.5" NHT Swivel)
29	33083000	1	Gasket - Rubber (2.5")
30	63069007	1	Base - Swivel (2.5" NHT Free Swivel)



## **ELKHART BRASS MFG. CO., INC.**

P.O. Box 1127 · 1302 West Beardsley Ave.

Elkhart, Indiana 46515

E-mail: [info@elkhartbrass.com](mailto:info@elkhartbrass.com)

Website: [www.elkhartbrass.com](http://www.elkhartbrass.com)

**(800) 346-0250**