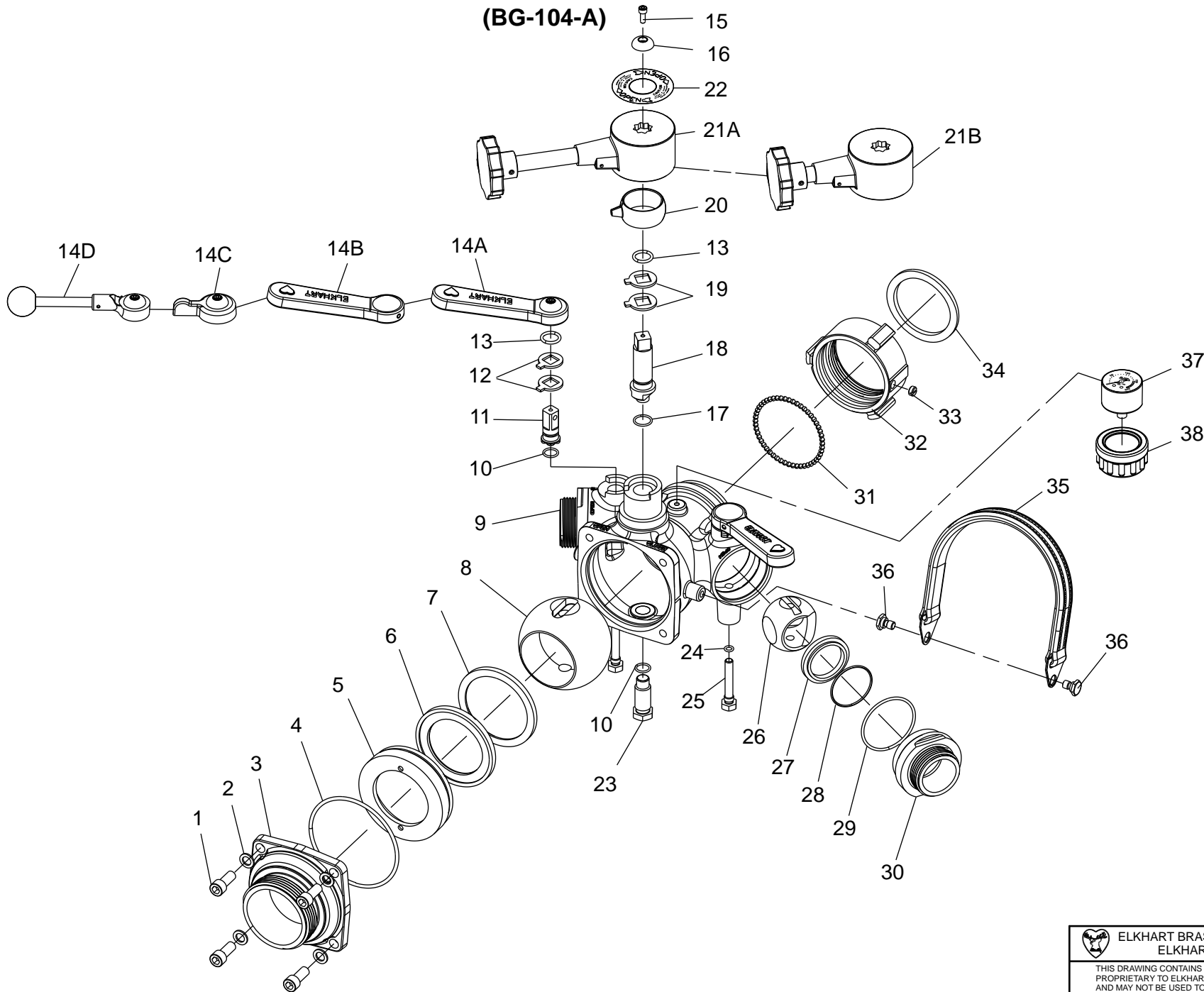


WATER THIEFS (BG-104-A)



WATER THIEFS

BG-104-A

INDEX #	PART #	QTY	DESCRIPTION
1	63790000	4	Cap Screw
2	71150000	4	Washer Flat
3	20122001	1	Cap-End (2.5 NHT)
4	57390000	1	O-Ring
5	58886001	1	Retainer Seat
6	61391000	1	Seat Valve
7	57273001	1	Ring Lock (Seat)
8	17303000	1	2.375 Ball Valve
9	16343001	1	Body Valve (3 Way)
10	57321000	3	O-Ring
11	63764001	2	Shaft Actuator
12	51813001	4	Stop Plate
13	57395000	3	O-Ring
14A	99454201	2	Alum Long Handle
14B	99454101	2 (Opt)	Urethane Handle
14C	99454301	2 (Opt)	Tab Handle
14D	99454401	2 (Opt)	Knob Handle
15	61037000	1	Screw Cap
16	71084000	1	Washer Handle
17	57295000	1	O-Ring
18	63756001	1	Shaft Actuator
19	51812001	2	Plate Stop
20	61706001	1	Sleeve Locking
21A	80664001	1	Handle Sub Ass'y (6.5")
21B	80664201	1(Opt)	Handle Sub Ass'y (4.38")
22	44257000	1	Label Caution & Open
23	61190001	1	Screw Ball Pivot
24	57348000	2	O-Ring
25	61194001	2	Screw Ball Pivot
26	17304000	2	Ball - Valve
27	63863000	2	Seat - Valve
28	57466000	2	O-Ring
29	57324000	2	O-Ring
30	10829001	2	Adapter - Outlet
31	15018000	52	Balls .187 Ball S/S
32	63069001	1	Swivel
33	63674000	1	Screw Set
34	33083000	1	Gasket-Rubber
35	80083001	1	Carrying Strap
36	16398001	2	Bolt Shoulder
37	39130000	1(Opt)	Gauge Pressure
38	23544000	1(Opt)	Cover Pressure



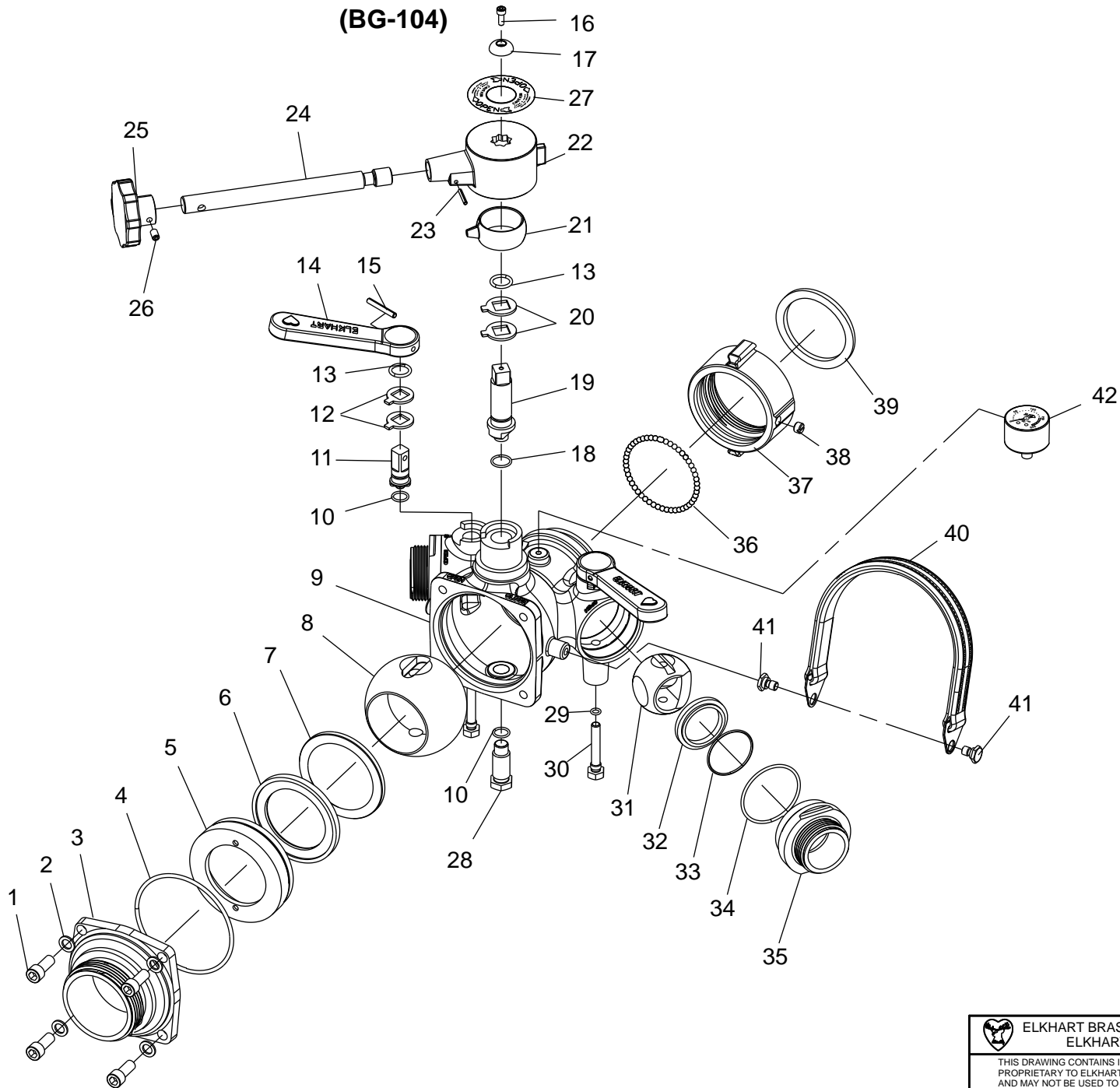
ELKHART BRASS MFG. CO., INC.
ELKHART, INDIANA

THIS DRAWING CONTAINS INFORMATION THAT IS
PROPRIETARY TO ELKHART BRASS MFG. CO., INC.
AND MAY NOT BE USED TO PRODUCE ANY PARTS,
ASSEMBLIES OR PRODUCTS DESCRIBED HEREIN
WITHOUT EXPRESS WRITTEN PERMISSION.

BG-104-A
PAGE 2 OF 4
03/2009

PART
LIST

WATER THIEFS (BG-104)




ELKHART BRASS MFG. CO., INC.
 ELKHART, INDIANA

THIS DRAWING CONTAINS INFORMATION THAT IS
 PROPRIETARY TO ELKHART BRASS MFG. CO., INC.
 AND MAY NOT BE USED TO PRODUCE ANY PARTS,
 ASSEMBLIES OR PRODUCTS DESCRIBED HEREIN
 WITHOUT EXPRESS WRITTEN PERMISSION.

BG-104
 PAGE 3 OF 4
 03/2009

PART
 DRAWING

WATER THIEFS

BG-104

INDEX #	PART #	QTY	DESCRIPTION
1	63790000	4	Cap Screw
2	71150000	4	Washer Flat
3	20113001	1	Cap-End (2.5 NHT)
4	57390000	1	O-Ring
5	57032001	1	Retainer Seat
6	61391000	1	Seat Valve
7	57264001	1	Ring Lock (Seat)
8	17303000	1	2.375 Ball Valve
9	16342001	1	Body Valve (3 Way)
10	57321000	3	O-Ring
11	63754001	2	Shaft Actuator
12	51813001	4	Stop Plate
13	57395000	3	O-Ring
14	36313001	2	Urethane Handle
15	51254000	2	Roll Pin
16	61036000	1	Screw Cap
17	71082000	1	Washer Handle
18	57295000	1	O-Ring
19	61467000	1	Shaft Actuator
20	51812001	2	Plate Stop
21	61701001	1	Sleeve Locking
22	15787002	1	Handle Body
23	51246000	1	Roll Pin
24	61516001	1	Rod Handle
25	63677000	1	Screw Set
26	42034001	1	Knob Lock
27	44257000	1	Label Caution & Open
28	61190001	1	Screw Ball Pivot
29	57348000	2	O-Ring
30	61194001	2	Screw Ball Pivot
31	17304000	2	Ball - Valve
32	63863000	2	Seat - Valve
33	57466000	2	O-Ring
34	57324000	2	O-Ring
35	10827001	2	Adapter - Outlet
36	15016000	52	Balls .187 Ball Brass
37	62916002	1	Swivel
38	61248000	1	Screw Set
39	33083000	1	Gasket-Rubber
40	80083001	1	Carrying Strap
41	16398001	2	Bolt Shoulder
42	39130000	1(Opt)	Gauge Pressure

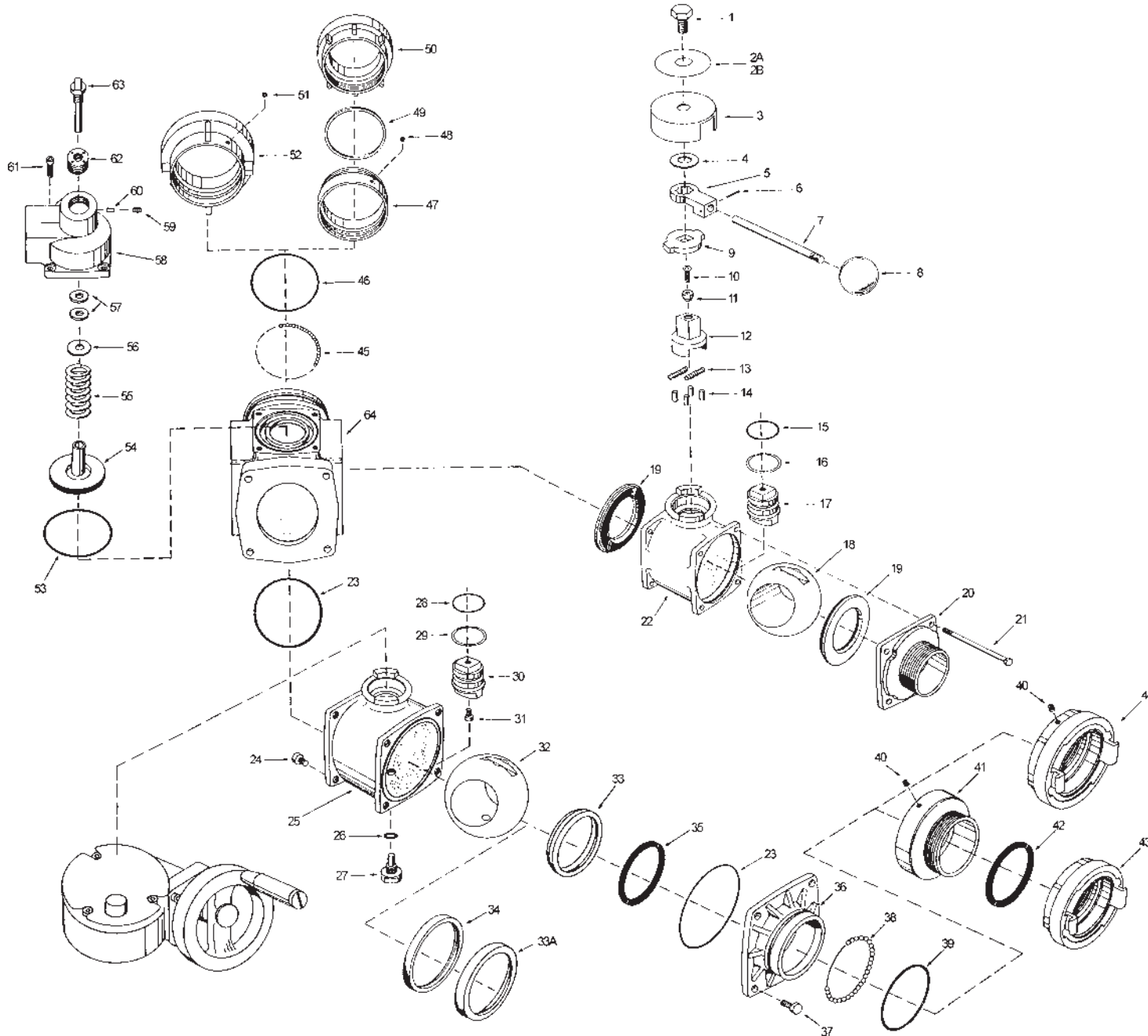


ELKHART BRASS MFG. CO., INC.
ELKHART, INDIANA

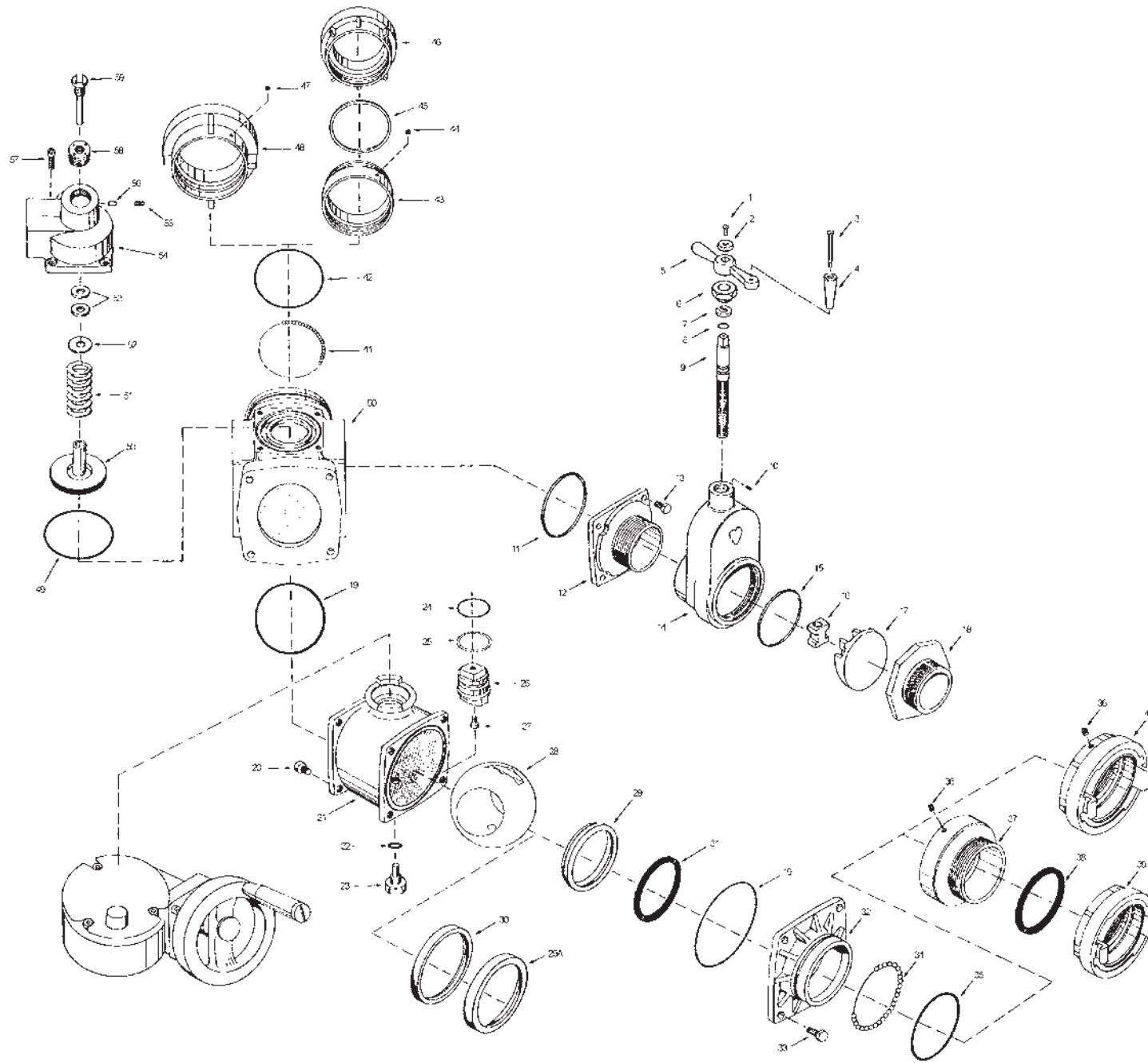
THIS DRAWING CONTAINS INFORMATION THAT IS
PROPRIETARY TO ELKHART BRASS MFG. CO., INC.
AND MAY NOT BE USED TO PRODUCE ANY PARTS,
ASSEMBLIES OR PRODUCTS DESCRIBED HEREIN
WITHOUT EXPRESS WRITTEN PERMISSION.

BG-104
PAGE 4 OF 4
03/2009

PART
LIST



INDEX NO.	PART NO.	QTY. REQ.	DESCRIPTION
1	16418005	2	Handle Bolt
2A	44256000	1	Caution Label (CCW)
2B	44257000	1	Caution Label (CW)
3	23515004	2	Handle Cover
4	71156001	2	Flat Washer
5	36318000	2	Handle Body
6	51246000	2	Roll Pin
7	61530001	2	Handle Rod
8	42023000	2	Handle Knob
9	51815000	2	Stop Plate
10	64062000	2	Cap Screw
11	63595001	2	Spacer
12	63765001	2	Upper Actuator
13	62126000	2	Coil Spring
14	51119001	4	Lock Pin
15	57396000	2	"O"-Ring
16	71188000	2	Teflon Washer
17	63767001	2	Lower Actuator
18	17313000	2	Valve Ball
19	61418000	4	Valve Seat
20	25104001	2	2.5" End Cap
21	16383000	8	Hex Bolt
22	16967001	2	Valve Body
23	57460000	2	"O"-Ring
24	61187000	4	Machine Screw
25	17735001	1	Valve Body
26	57428000	1	"O"-Ring
27	16419001	1	Pivot Bolt
28	57396000	1	"O"-Ring
29	71188000	1	Teflon Washer
30	65320001	1	Actuator Shaft
31	63643001	1	Actuator Screw
32	17318001	1	Valve Ball
33	63860000	1	4" Valve Seat (N/S)
33A	61419000	1	4" Valve Seat (O/S - Pre '95)
34	58887001	1	Seat Retainer (O/S - Pre '95)
35	57369000	1	"O"-Ring
36	25148001	1	End Cap
37	65113000	4	Machine Screw
38	15027000	64	.250" S/S Ball
39	57402000	1	"O"-Ring
40	63675000	1	Set Screw
41	11655001	1	5" F/S Adapter
42	33260000	1	Gasket
43	11668000	1	4" Storz Connector w/ Lock
44	11671000	1	5" Storz Connector w/ Lock
45	15027000	64	.250" S/S Ball
46	57402000	1	"O"-Ring
47	11655001	1	5" F/S Adapter
48	63675000	1	Set Screw
49	33260000	1	Gasket
50	11668000	1	4" Storz Connector w/ Lock
51	63675000	1	Set Screw
52	11671000	1	5" Storz Connector w/ Lock
53	57456000	1	"O"-Ring
54	52196001	1	Molded Urethane Piston
55	62123000	1	Coil Spring
56	71130001	1	Tension Washer
57	71189000	2	Thrust Washer
58	16982001	1	Valve Bonnet
59	63697000	1	Set Screw
60	51021001	1	Locking Pellet
61	63798000	4	Cap Screw
62	16674001	1	Adjusting Bushing
63	16422001	1	Adjusting Screw
64	17666001	1	Appliance Body



INDEX NO.	PART NO.	QTY. REQ.	DESCRIPTION
1	61211000	2	Self Tapping Screw
2	71080000	2	Handle Washer
3	16431000	2	Swivel Bolt
4	36704000	2	Handle Swivel
5	36052000	2	Handle
6	47631001	2	Nut Stem
7	71032001	2	"C" Washer
8	574343000	2	"O"-Ring
9	62657001	2	Valve Stem
10	63685000	2	Set Screw
11	57312000	2	"O"-Ring
12	25132001	2	End Cap
13	63798000	8	Cap Screw
14	16994001	2	Valve Body
15	57312000	2	"O"-Ring
16	47450001	2	Gate Nut
17	33573001	2	Gate
18	11558001	2	Body Adapter
19	57460000	2	"O"-Ring
20	61187000	4	Machine Screw
21	17735001	1	Valve Body
22	57428000	1	"O"-Ring
23	16419001	1	Pivot Bolt
24	57396000	1	"O"-Ring
25	71188000	1	Teflon Washer
26	65320001	1	Actuator Shaft
27	63643001	1	Actuator Screw
28	17318001	1	Valve Ball
29	63860000	1	4" Valve Seat (N/S)
29A	61419000	1	4" Valve Seat (O/S - Pre '95)
30	58887001	1	Seat Retainer (O/S - Pre '95)
31	57369000	1	"O"-Ring
32	25148001	1	End Cap
33	65113000	4	Machine Screw
34	15027000	64	.250" S/S Ball
35	57402000	1	"O"-Ring
36	63675000	1	Set Screw
37	11655001	1	5" F/S Adapter
38	33260000	1	Gasket
39	11668000	1	4" Storz Connector w/ Lock
40	11671000	1	5" Storz Connector w/ Lock
41	15027000	64	.250" S/S Ball
42	57402000	1	"O"-Ring
43	11655001	1	5" F/S Adapter
44	63675000	1	Set Screw
45	33260000	1	Gasket
46	11668000	1	4" Storz Connector w/ Lock
47	63675000	1	Set Screw
48	11671000	1	5" Storz Connector w/ Lock
49	57456000	1	"O"-Ring
50	52196001	1	Molded Urethane Piston
51	62123000	1	Coil Spring
52	71130001	1	Tension Washer
53	71189000	2	Thrust Washer
54	16982001	1	Valve Bonnet
55	63697000	1	Set Screw
56	51021001	1	Locking Pellet
57	63798000	4	Cap Screw
58	16674001	1	Adjusting Bushing
59	16422001	1	Adjusting Screw
60	17666001	1	Appliance Body