

# 890 1.0" APPARATUS VALVE

April, 1996

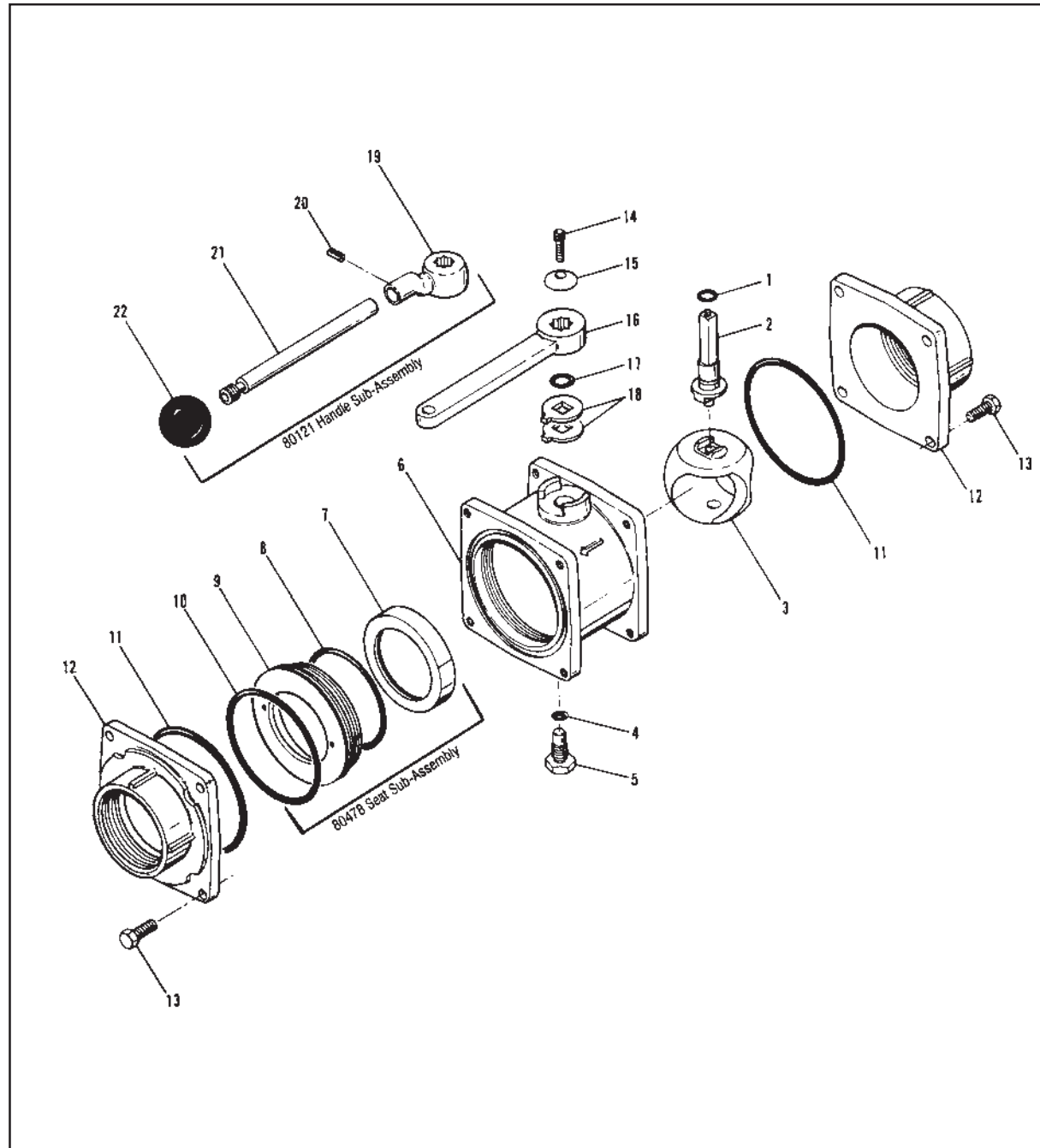
INDEX NO.	PART NO.	QTY. REQ.	DESCRIPTION
1	57321	1	"O"-Ring for Actuator Shaft
2	61476	1	Actuator Shaft
3	15076	1	Valve Ball
4	57348	1	"O"-Ring for Pivot Bolt
5	63702	1	Pivot Bolt
6	16327	1	Valve Body
7	61399	1	Seat
8	57394	1	"O"-Ring for Seat
9	58880	1	Seat Retainer
10	57297	1	"O"-Ring for Retainer
11	57319	2	"O"-Ring for Body
12	20076	2	#01 End Cap, 1.0" NPT Female
13	61144	8	Bolt for End Caps
14	61036	1	Cap Screw
15	71082	1	Handle Washer
16	36004	1	"D"-Handle (Remote)
17	57395	1	"O"-Ring (Spacer)
18	51813	2	Stop Plate
19	15802	1	"E" Handle Body
20	51243	1	Roll Pin
21	61520	1	Handle Rod
22	42022	1	Knob

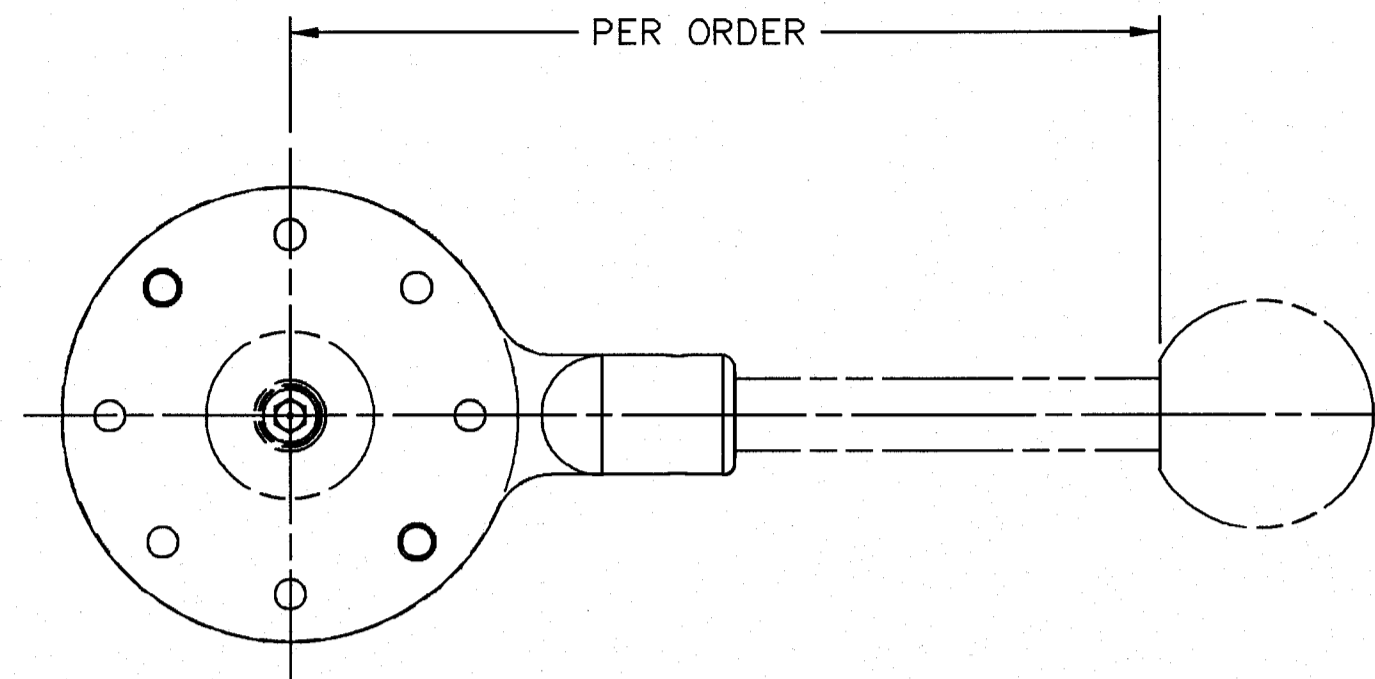
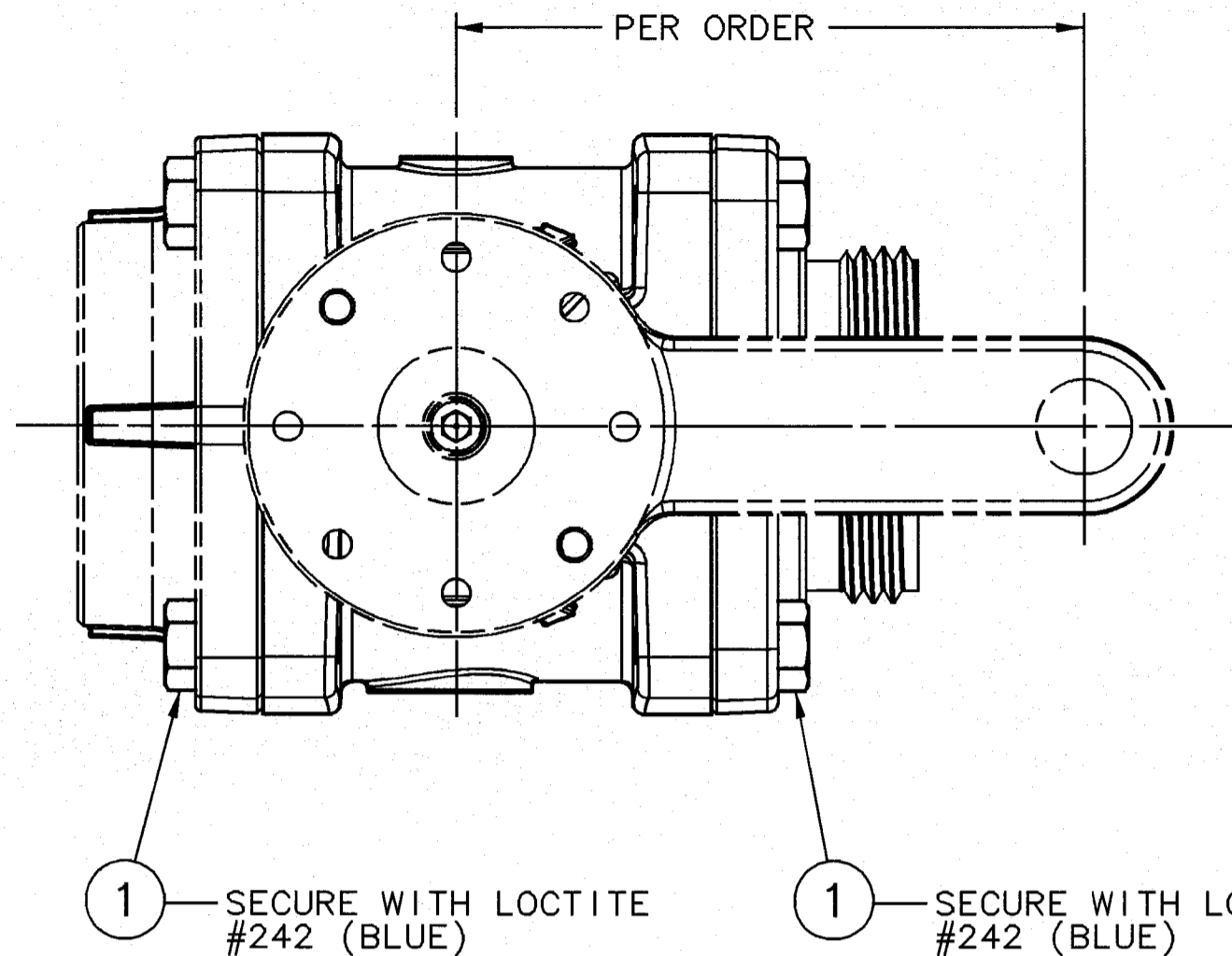
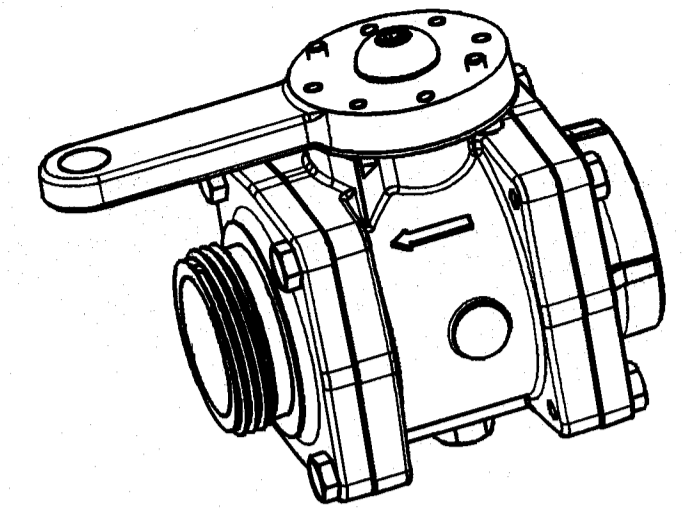
Body Sub-Assy.

\*80478 Seat Sub-Assembly

80121 "E" Handle Sub-Assembly

\*NOTE: New Seat Sub-Assembly (80478) will fit in old style valve with one piece seat.

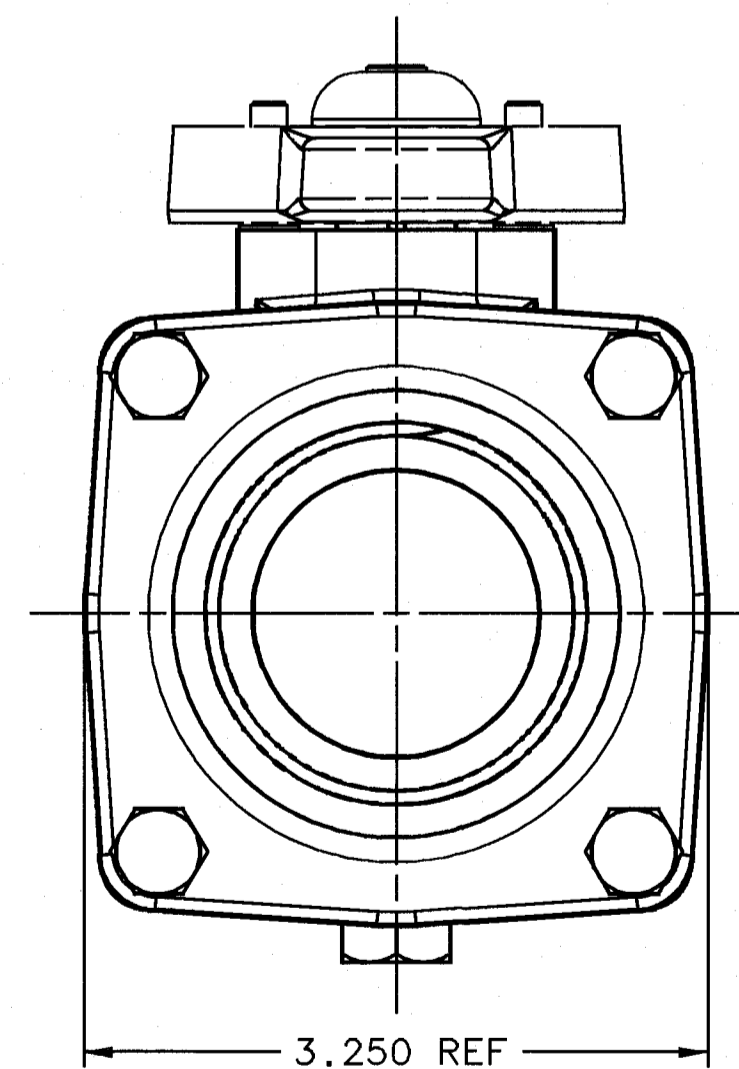
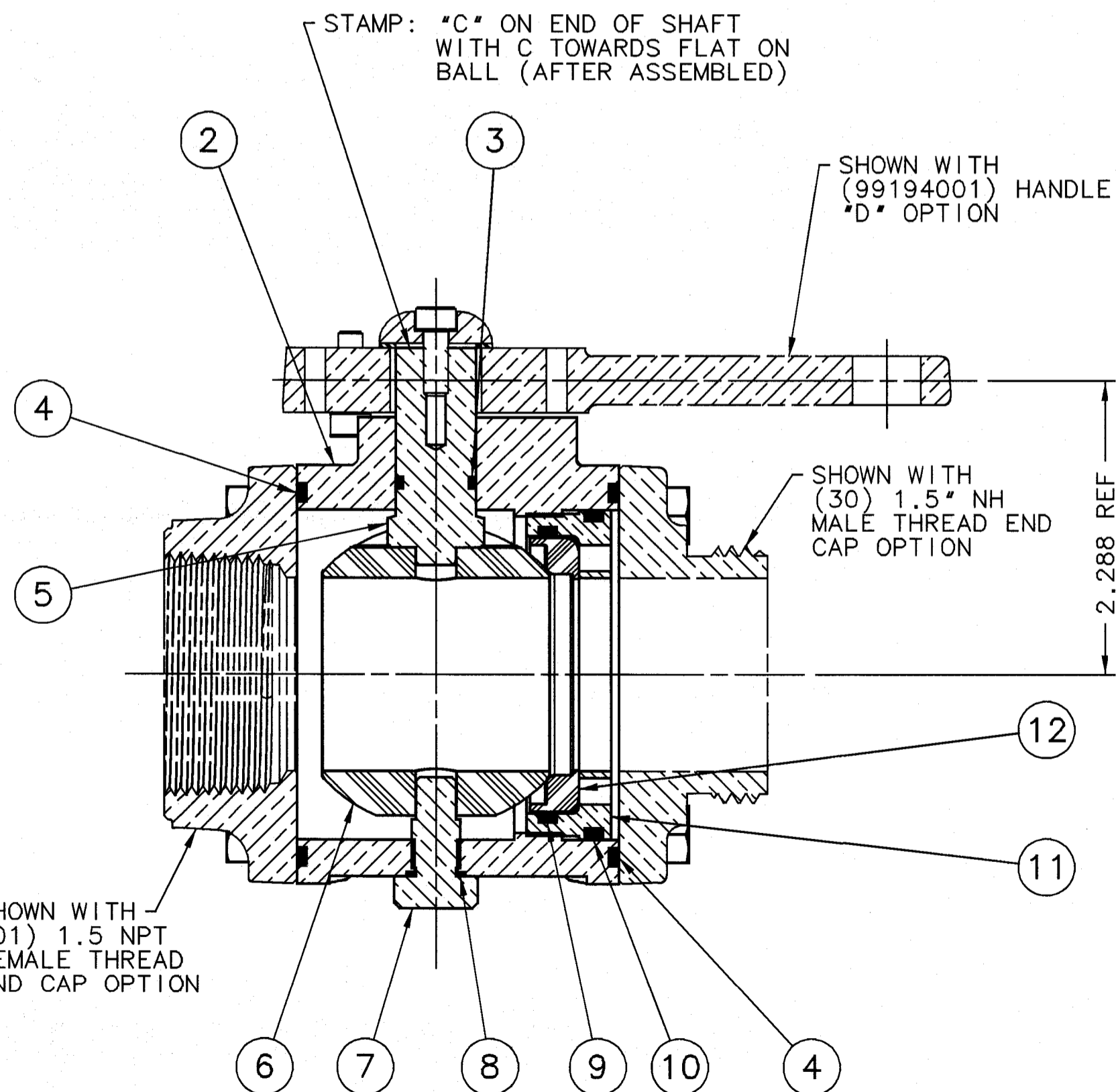




HANDLE ASS'Y "E"

VALVE HANDLE OPTIONS  
SEE DRAWING 98456000

1.5" VALVE END CAP OPTIONS  
SEE DRAWING 98258000



1.5 VALVE SUB-ASSY #80804001 (PHANTOM)

12	63821001	SEAT - BALL	1
11	58882001	RETAINER - SEAT	1
10	57318000	O-RING AS-568-142 2.362 X 0.103 C/S	1
9	57421000	O-RING AS-568-138 2.112 X 0.103 C/S	1
8	57348000	O-RING AS-568-010 0.239 X 0.070 C/S	1
7	63704000	BOLT - PIVOT (BALL)	1
6	15077000	BALL - VALVE (CELCON)	1
5	63758000	SHAFT - ACTUATOR	1
4	57338000	O-RING AS-568-148 2.737 X 0.103 C/S	2
3	57321000	O-RING AS-568-014 0.489 X 0.070 C/S	1
2	16960001	BODY - VALVE 1.5"	1
1	63785000	SCREW-MACH (STNL. STL.) 0.250-20 X 0.750 LG HEX HD	8

NO.	PART NO.	PART NAME	REQ.
<b>ELKHART BRASS MFG. CO., INC.</b> ELKHART, INDIANA			
<b>1 1/2 LINE APPARATUS VALVE</b>			
DRN BY	GDW	SCALE	FULL
DATE	7/20/2007	CAT. NO.	891
CHKD BY	GARY	DRWG. SIZE	C
STANDARD TOLERANCE 3 PLACE DEC. - ±.010 4 PLACE DEC. - ±.005 ANGLES - ±0°30'0"			
REMOVE ALL BURRS AND SHARP CORNERS UNLESS OTHERWISE SPECIFIED DO NOT SCALE PRINT			

# 892 2.0" APPARATUS VALVE

September, 2002

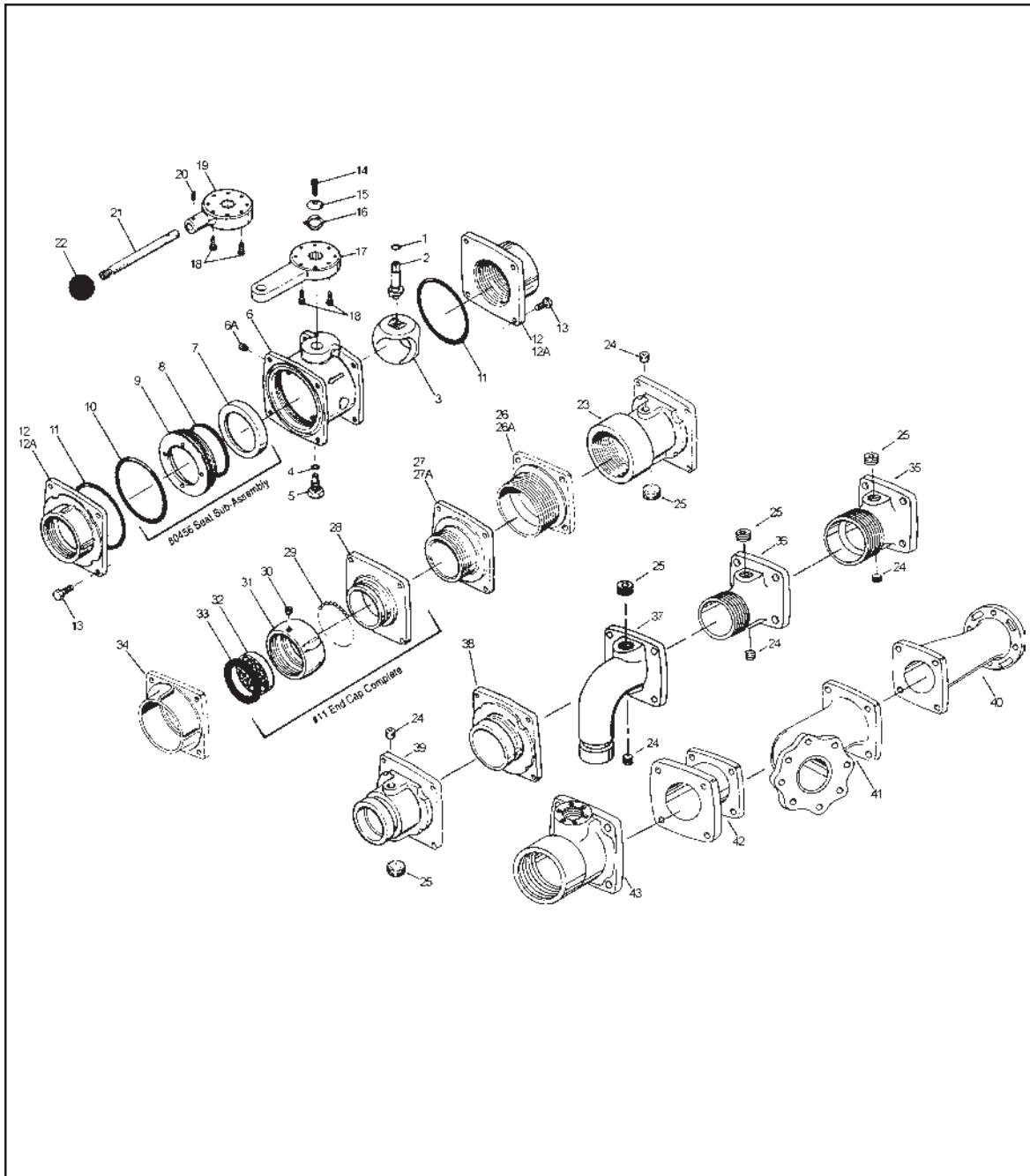
INDEX NO.	PART NO.	QTY. REQ.	DESCRIPTION
1	57321	1	"O" Ring for Actuator Shaft
2	63760	1	Actuator Shaft
3	17305	1	Valve Ball
4	57321	1	"O" Ring for Pivot Bolt
5	63703	1	Pivot Bolt
6	16961	1	Valve Body
6A	51891	1	Plug, .125" NPT, Brass
7	63822	1	Seat
8	57338	1	"O" Ring for Seat
9	58883	1	Seat Retainer
10	57296	1	"O" Ring for Retainer
11	57416	2	"O" Ring for Body
12	20060	2	#01 End Cap, 2.0" NPT Female
12A	20095	1	#02 End Cap, 2.5" NPT Female
13	61030	8	Bolt for End Caps
14	61036	1	Cap Screw
15	71082	1	Handle Washer
16	71122	1	Wave Washer
17	36158	1	"D" Handle (Remote)
18	61046	2	Cap Screw
19	17453	1	"E" Handle Body
20	51243	1	Roll Pin
21	61520	1	Handle Rod
22	42022	1	Knob
23	25158	1	#03 End Cap, 2.0" NPT Female
24	51890	1	.250" NPT Pipe Plug
25	51881	1	.750" NPT Pipe Plug
26	20059	1	#31 End Cap, 2.5" NST Male
26A	20059	1	#41 End Cap, 2.5" BSP Male
27	20053	1	#30 End Cap, 2.0" NST Male
27A	20088	1	#40 End Cap, 2.0" NPT Male
28	20104	1	#11 End Cap, 2.5" B/G
29	15016	52	.187" Diam. Brass Ball
30	61222	1	Set Screw, CP
31	62919	1	Swivel, 2.5" NST, CP
32	62726	1	Strainer
33	33083	1	Rubber Gasket
34	20061	1	#09 End Cap, 2.0" Solder Joint
35	25195001	1	#34 End Cap (2.5" NHT Male) 3.0" L
36	25194001	1	#43 End Cap (2.0" NPT Male) 3.0" L
37	25176001	1	#55 End Cap, 90° (1.5" Victaulic) 6.750" L
38	20147001	1	#50 End Cap (2.0" Victaulic)
39	25153001	1	#52 End Cap (2.0" Victaulic)
40	25183001	1	#28 End Cap, 2.5" Waterous or Hale Flange, 6.0" L
41	25182001	1	#24 End Cap, 90° Waterous or Hale Flange, 8.0" L
42	25181001	1	#20 End Cap, Waterous or Hale Flange, 2.750" L
43	25169001	1	#89 End Cap (2.0" NPT Female) w/ Boss for Flowmeter (Class 1), 3.0" L

Body Sub-Assty.

\*80456 Seat Sub-Assembly

80803 "E" Handle Sub-Assembly

#11 End Cap Complete



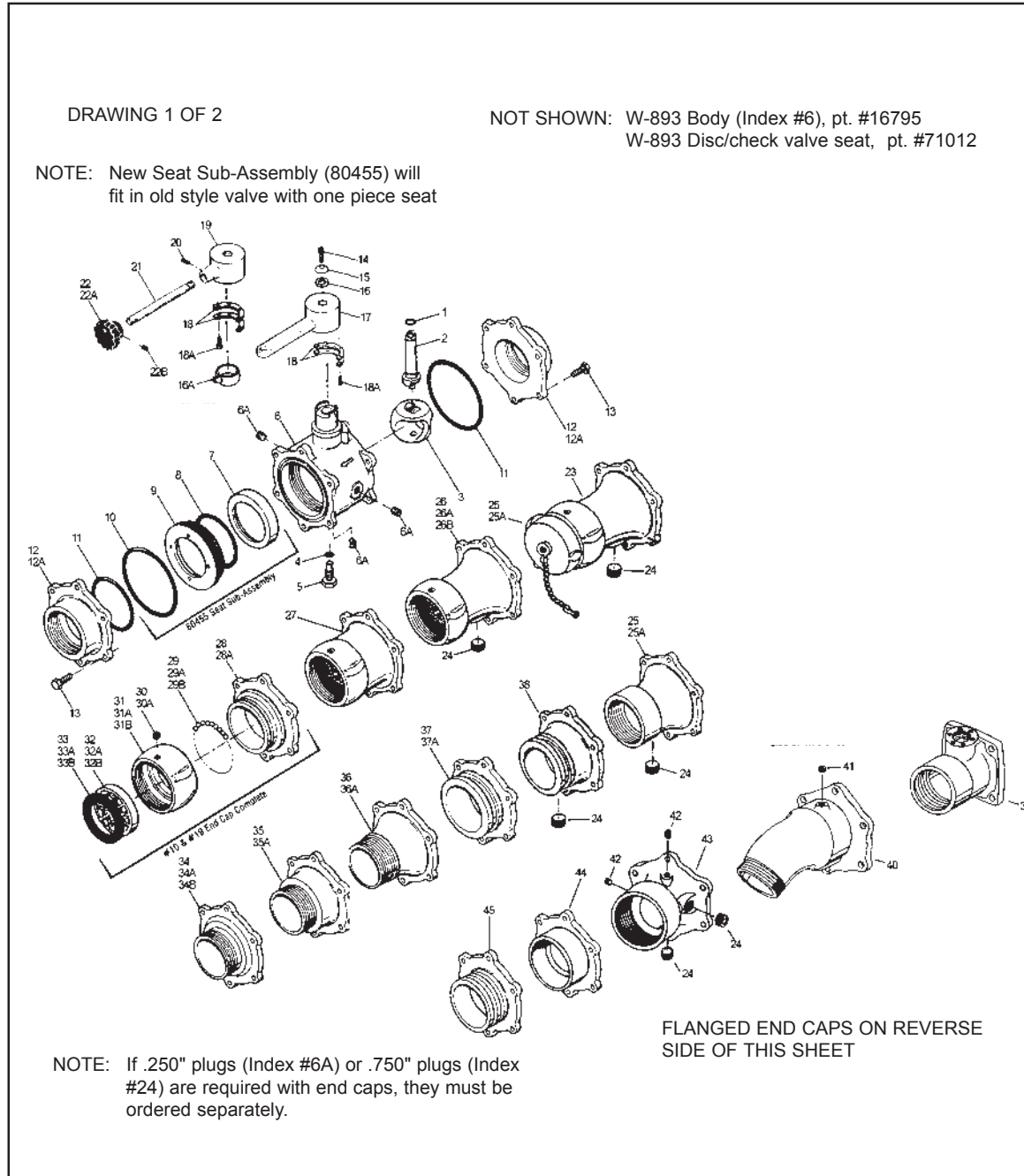
\*NOTE: New Seat Sub-Assembly (80456) will fit in old style valve with one piece seat.

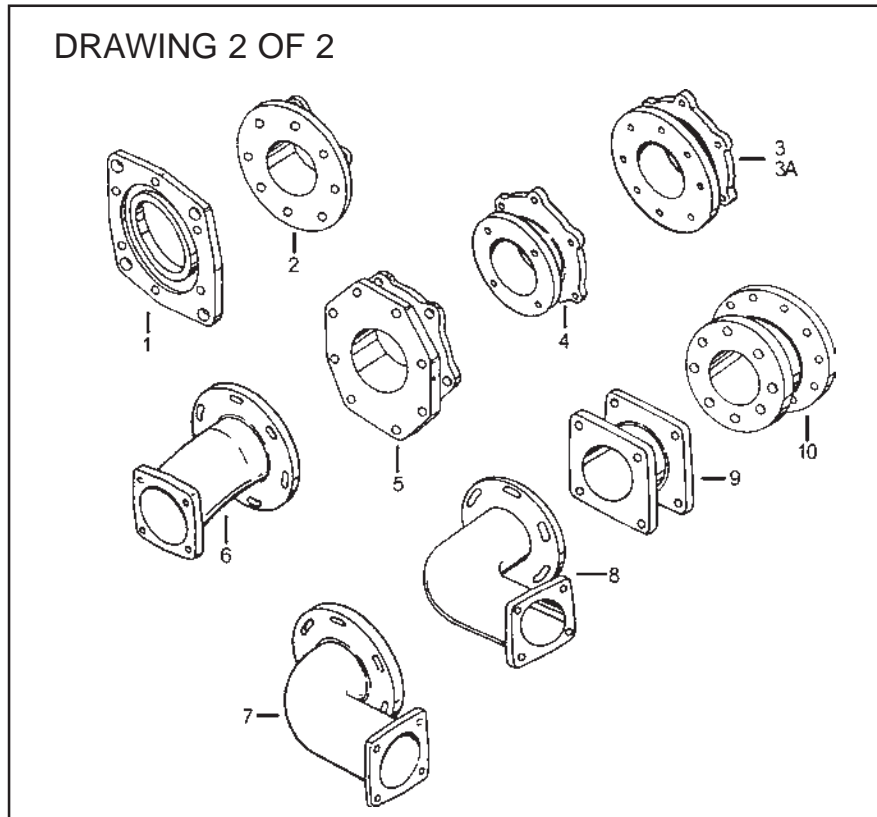
# 893 3.0" APPARATUS VALVE (Drawing 1 of 2)

September, 2002

INDEX PART QTY.

INDEX NO.	PART NO.	REQ.	DESCRIPTION
1	57295	1	"O" Ring for Actuator Shaft
2	63752	1	Actuator Shaft
3	15080	1	Valve Ball
4	57295	1	"O" Ring for Pivot Bolt
5	16406	1	Pivot Bolt
6	16288	1	Valve Body
6A	51890	3	Plug, .250" NPT
7	63823	1	Seat
8	57307	1	"O" Ring for Seat
9	58885	1	Seat Retainer
10	57308	1	"O" Ring for Retainer
11	57363	2	"O" Ring for Body
12	20086	2	#01 End Cap, 3.0" NPT Female
12A	20135	1	#02 End Cap, 3.5" NPT Female
13	16375	12	Bolt for End Caps
14	61036	1	Cap Screw
15	71082	1	Handle Washer
16	63592	1	Washer (Spacer)
16A	61701	1	Locking Sleeve ("F" Handle Only)
17	15788	1	"D" Handle Body (Remote)
18	16507	2	Stop Bracket
18A	61046	4	Cap Screw
19	15787	1	"E" or "F" Handle Body
20	51246	1	Roll Pin
21	61516	1	"E" or "F" Handle Rod
22	42053	1	"E" Handle, Non-Lock Knob
22A	42054	1	"F" Handle Knob, Locking
22B	63677	1	Set Screw
23	02576S	1	#98 End Cap, 3.0" NST Female w/Plug
24	51881	1	Plug, .750" NPT
25	20117	1	#03 End Cap, 3.0" NPT Female
25A	25114	1	#04 End Cap, 3.5" NPT Female
26	20098	1	#13 End Cap, 3.0" BG (Swivel Group "A")
26A	20105	1	#14 End Cap, 3.5" BG (Swivel Group "B")
26B	20127	1	#17 End Cap, 2.5" BG (Swivel Group "C")
27	20133	1	#11 End Cap, 3.5" BG (Swivel Group "B")
28	20128	1	#19 End Cap, 2.5" BG (Swivel Group "C")
28A	20106	1	#10 End Cap, 3.0" BG
29	15016	58	.187" Diam. Brass Ball
30	61221	1	Set Screw, CP
31	63071	1	Swivel, 3.0" NST, CP
32	62725	1	Strainer, 3.0"
33	33094	1	Rubber Gasket, 3.0"
29A	15016	71	.187" Diam. Brass Ball
30	61221	1	Set Screw, CP
31A	63311	1	Swivel, 3.5" NST, CP
32A	62716	1	Strainer, 3.5"
33A	33186	1	Rubber Gasket, 3.5"
29B	15016	52	.187" Diam. Brass Ball
30A	61222	1	Set Screw, CP
31B	62919	1	Swivel, 2.5" NST, CP
32B	62726	1	Strainer, 2.5"
33B	33083	1	Rubber Gasket, 2.5"
34	20093	1	#30 End Cap, 3.0" NST Male
34A	20126	1	#40 End Cap, 3.0" NPT Male
34B	20138	1	#42 End Cap, 4.0" NPT Male
35	20114	1	#31 End Cap, 3.5" NST Male
35A	25091	1	#41 End Cap, 3.5" NPT Male
36	20097	1	#33 End Cap, 3.0" NST Male
36A	20116	1	#34 End Cap, 3.5" NST Male
37	25110	1	#50 End Cap, 3.0" Victaulic
37A	20124	1	#51 End Cap, 4.0" Victaulic
38	25151	1	#52 End Cap, 3.0" Victaulic
39	25170001	1	#89 End Cap, 3.0" NPT Female w/ Boss for Flowmeter (Class 1), 4.125" L
40	25158001	1	#37 End Cap, 2.5" Droop Snoot, 6.724" L
41	51885000	1	Plug, .250" NPT- Brass
42	51890000	1	Plug, .250" NPT - Brass
43	25178001	1	#05 End Cap, 4" NPT Female
44	20110001	1	#09 End Cap, 3.0" Solder Joint
45	20137001	1	#60 End Cap, 3.5" OD Shank





INDEX NO.	PART NO.	QTY. REQ.	DESCRIPTION
1	25144**	1	#53 End Cap, 7.778" BC
2	02576F††	1	#26 End Cap, 4.0" - 150# Flange
3	20141*	1	#22 End Cap, 5.750" BC
3A	25098**	1	#29 End Cap, 5.500" BC
4	25099†	1	#20 End Cap, 4.375" BC
5	25140**	1	#23 End Cap, 6.625" BC
6	25096†	1	#28 End Cap, 4.375" BC (Offset)
7	25097†	1	#25 End Cap, 4.375" BC (90° Elbow)
8	25107†	1	#24 End Cap, 4.375" BC (90° Elbow)
9	25163001	1	#20-1 End Cap, 4.250" BC
10	25161001	1	#54 End Cap, 5.500" BC (4 degree)

\* Flange for Hale Pump

\*\* Flange for Waterous Pump

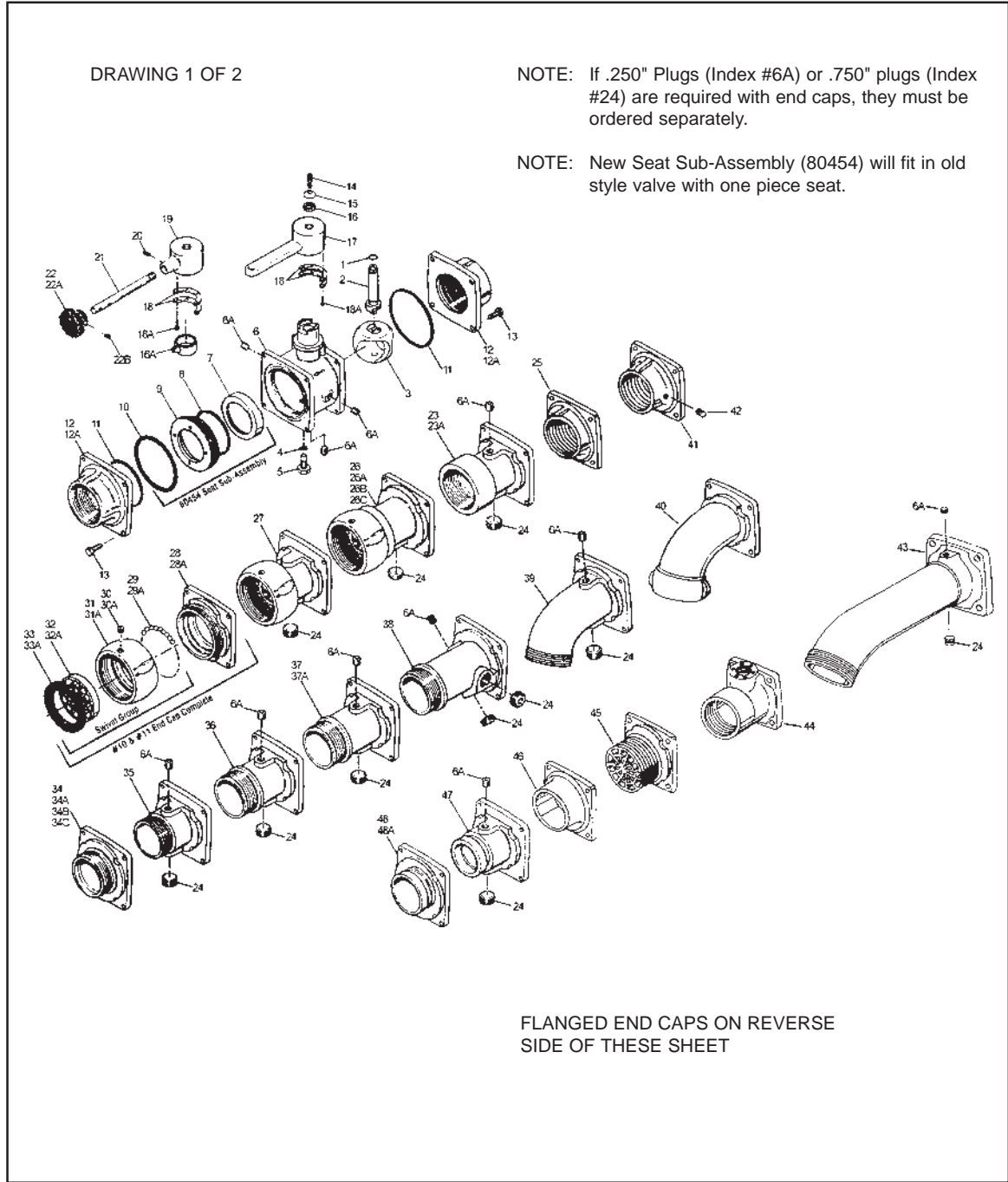
† Flange for Hale & Waterous Pumps

†† Parent Part #02576231

# 896 2.5" APPARATUS VALVE (Drawing 1 of 2)

September, 2002

INDEX NO.	PART NO.	QTY.	DESCRIPTION
1	57295	1	"O" Ring for Actuator Shaft
2	61478	1	Actuator Shaft
3	15079	1	Valve Ball
4	57321	1	"O" Ring for Pivot Bolt
5	61192	1	Pivot Bolt
6	16270	1	Valve Body
6A	51890	3	Plug, .250" NPT
7	63820	1	Seat
8	57475	1	"O" Ring for Seat
9	58881	1	Seat Retainer
10	57313	1	"O" Ring for Retainer
11	57378	2	"O" Ring for Body
12	20073	2	#01 End Cap, 2.5" NPT Female
12A	20142	1	#02 End Cap, 3.0" NPT Female
13	16375	8	Bolt for End Caps
14	61036	1	Cap Screw
15	71082	1	Handle Washer
16	63592	1	Washer (Spacer)
16A	61701	1	Locking Sleeve ("F" Handle Only)
17	15788	1	"D" Handle Body (Remote)
18	16507	2	Stop Bracket
18A	61046	4	Cap Screw
19	15787	1	"E" or "F" Handle Body
20	51246	1	Roll Pin
21	61516	1	"E" or "F" Handle Rod
22	42053	1	"E" Handle, Non-Lock Knob
22A	42054	1	"F" Handle Knob, Locking
22B	63677	1	Set Screw
23	20070	1	#03 End Cap, 2.5" NPT Female
23A	25092	1	#04 End Cap, 3.0" NPT Female
24	51881	1	Plug, .250" NPT
25	20054	1	#97 End Cap, 2.5" NPT Female
26	20068	1	#13 End Cap, 2.5" BG (Swivel Group "A")
26A	62919	1	#15 End Cap, 2.5" BG (Swivel Group "A")
26B	20099	1	#14 End Cap, 3.0" BG (Swivel Group "B")
26C	63071	1	#16 End Cap, 3.0" BG (Swivel Group "B")
27	20085	1	#12 End Cap, 2.5" BG (Swivel Group "A")
28	20064	1	#10 End Cap, 2.5" BG
29	15016	52	.187" Diam. Brass Ball
30	61222	1	Set Screw, CP
31	62919	1	Swivel, 3.0" NST, CP
32	62726	1	Strainer, 3.0"
33	33083	1	Rubber Gasket, 3.0"
28A	20107	58	#11 End Cap, 3.0" BG
29A	15016	1	.187" Diam. Brass Ball
30A	61221	1	Set Screw, CP
31A	63071	1	Swivel, 3.0" NST, CP
32A	62725	1	Strainer, 3.0"
33A	33094	1	Rubber Gasket, 3.0"
34	20063	1	#30 End Cap, 2.5" NST Male
34A	20074	1	#40 End Cap, 2.5" NPT Male
34B	20112	1	#41 End Cap, 3.0" NPT Male
34C	25094	1	#31 End Cap, 3.0" NST Male
35	20091	1	#32 End Cap, 2.5" NST Male
36	20067	1	#33 End Cap, 2.5" NST Male
37	20100	1	#35 End Cap, 2.5" NST Male
37A	20139	1	#44 End Cap, 2.5" NPT Male
38	20072	1	#36 End Cap, 2.5" NST Male
39	20146	1	#37 End Cap, 2.5" NST Male
40	25118	1	#18 End Cap, 2.5" NST Female
41	25100	1	#95 End Cap, 2.5" NPT Female
42	51891	1	.125" NPT Pipe Plug
43	25184001	1	#37-1 End Cap, 2.5" NH Male, 12.312" L
44	25168001	1	#89 End Cap, 2.5" NPT Female w/ Boss for Flowmeter (Class 1), 4.000" L
45	20066	1	#96 End Cap, 2.5" NST Male w/Strainer
46	20065	1	#09 End Cap, 2.5" Solder Joint
47	25119	1	#52 End Cap, 2.5" Victaulic
48	20052	1	#50 End Cap, 2.5" Victaulic
48A	25113	1	#51 End Cap, 3.0" Victaulic



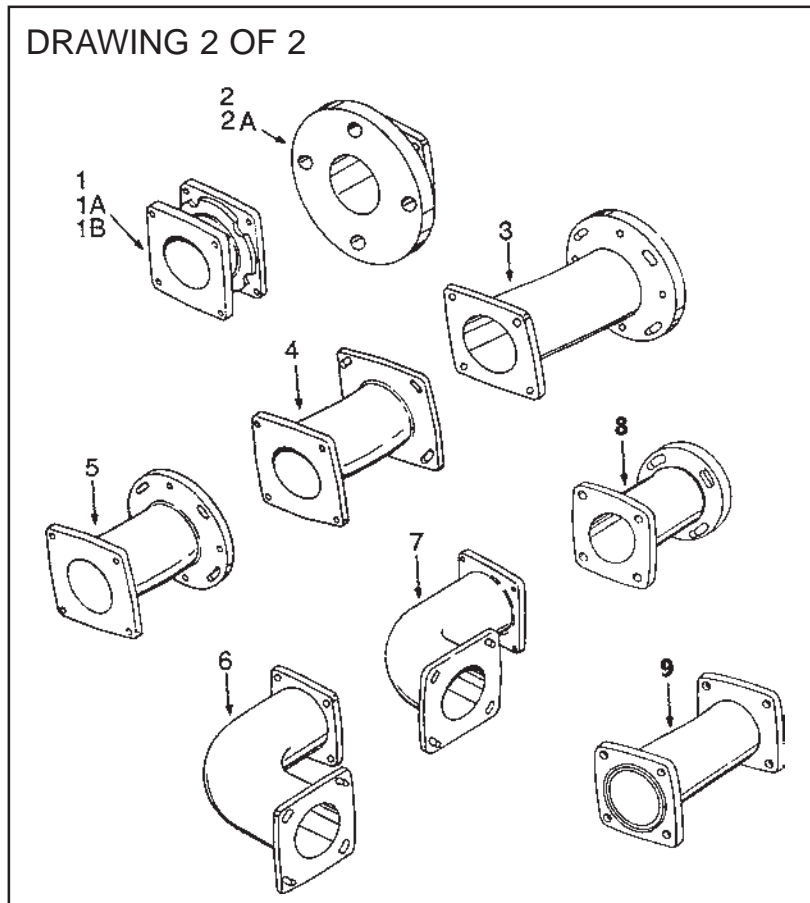
NOTE: If .250" Plugs (Index #6A) or .750" plugs (Index #24) are required with end caps, they must be ordered separately.

NOTE: New Seat Sub-Assembly (80454) will fit in old style valve with one piece seat.

FLANGED END CAPS ON REVERSE SIDE OF THESE SHEET

September, 2002

896



INDEX NO.	PART NO.	QTY. REQ.	DESCRIPTION
1	20050*	1	#20 End Cap, 4.375" BC
1A	20118	1	#21 End Cap, 4.375" BC (Seagrave)
1B	25112	1	#22 End Cap, 4.375" BC (Darley)
2	20148	1	#94 End Cap, 2.5" - 150# Flange (FF)
2A	20075	1	#23 End Cap, 2.5" - 300# Flange (RF)
3	25108*	1	#26 End Cap, 4.375" BC (Offset)
4	25093*	1	#27 End Cap, 4.375" BC (Offset)
5	25095*	1	#28 End Cap, 4.375" BC (Offset)
6	25106*	1	#24 End Cap, 4.375" BC (90° Elbow)
7	25090*	1	#25 End Cap, 4.375" BC (90° Elbow)
8	25175001*	1	#20-2 End Cap, 4.275" BC
9	25157001*	1	#20-1 End Cap, 4.375" BC

\* Flange End Caps for Hale or Waterous Pumps

# 2891 1.5" HYDRO-LOC VALVE

September, 2002

INDEX NO.	PART NO.	QTY. REQ.	DESCRIPTION
1	57321	1	"O" Ring for Actuator Shaft
2	63759	1	Actuator Shaft
2A	51256	1	Roll Pin (Secondary Stop)
3	15077	1	Valve Ball
4	57348	1	"O" Ring for Pivot Bolt
5	63704	1	Pivot Bolt
6	16791	1	Valve Body
7	63821	1	Seat
8	57421	1	"O" Ring for Seat
9	58882	1	Seat Retainer
10	57318	1	"O" Ring for Retainer
11	57338	2	"O" Ring for Body
12	2005001	2	#01 End Cap, 1.5" NPT Female
13	61144	8	Bolt for End Caps
14	61036	1	Cap Screw
15	71082	1	Handle Washer
16	25075	1	Handle Disc
16A	11515	1	Actuator Clip
16B	61794	1	Lock Spring
17	16782	1	"D" Handle (Remote)
18	16536	2	Stop Bracket
18A	61076	4	Cap Screw
19	16781	1	"F" Handle Body
20	51243	1	Roll Pin
21	61520	1	Handle Rod
22	42022	1	Knob
23	20101	1	#20 End Cap, Flange
24	20149	1	#50 End Cap, 1.5" Victaulic
25	20102	1	#33 End Cap, 1.5" NST Male
25A	20103	1	#43 End Cap, 1.5" NPT Male
26	20056	1	#30 End Cap, 1.5" NST Male
26A	25102	1	#40 End Cap, 1.5" NPT Male
27	25101	1	#03 End Cap, 1.5" NPT Female
28	51891	1	Plug, .125" NPT Brass
29	20057	1	#09 End Cap, 1.5" Solder Joint
30	51881000	1	.750" Pipe Plug
31	25176001	1	#55 End Cap, 1.5" 90 Degree Victaulic
32	51890000	1	.250" Pipe Plug
33	20058	1	#10 End Cap, 1.5" B/G
34	15016	32	.187" Diam. Brass Ball
35	62960	1	Swivel, 1.5" Hose Thd., CP
36	61222	1	Set Screw, CP
37	33074	1	Rubber Gasket

Body Sub-Assy.

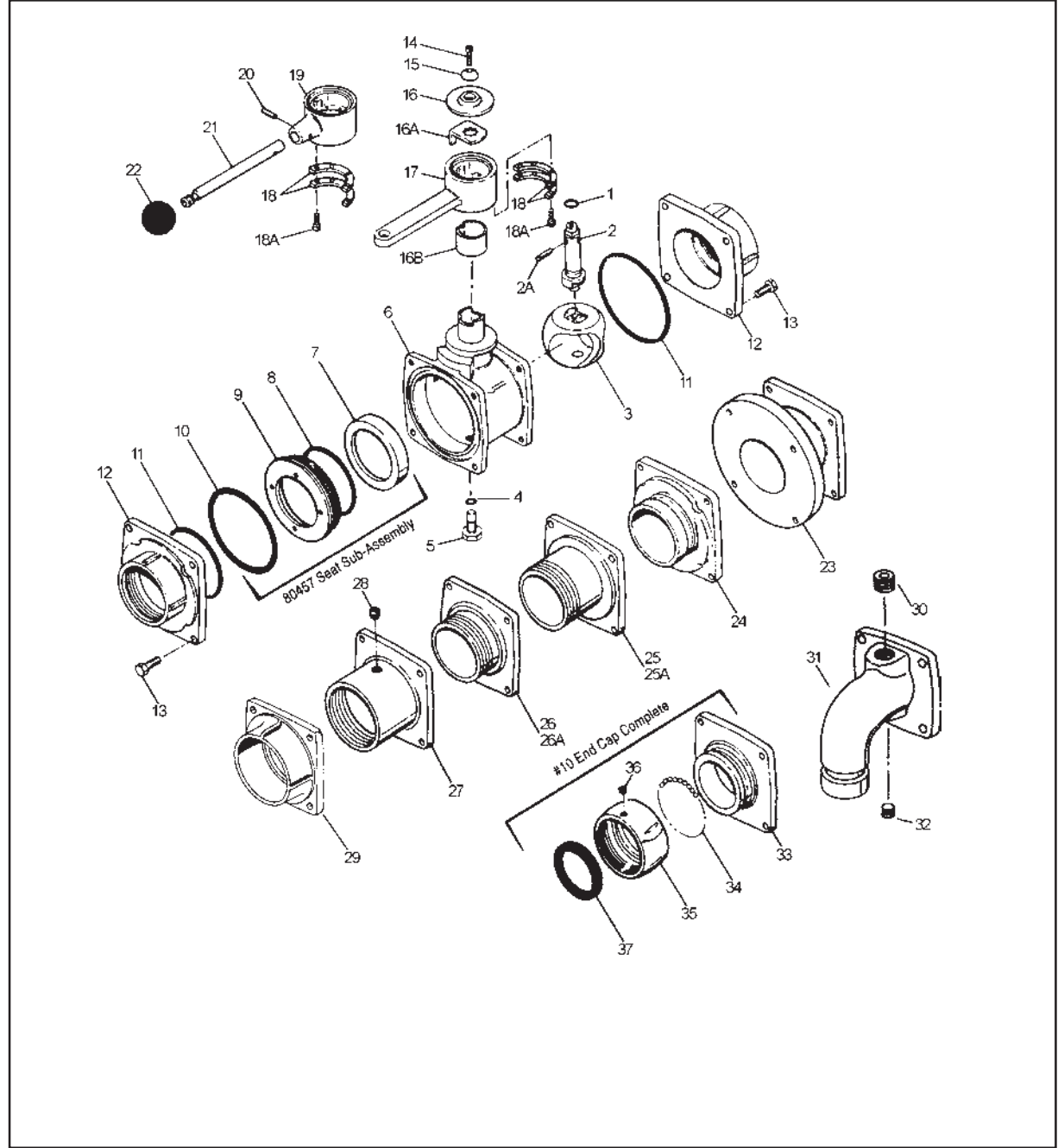
\*80457 Seat Sub-Assembly

80859 "F" Handle Sub-Assembly

80457 Seat Sub-Assembly

#10 End Cap Complete

#10 End Cap Complete



**\*NOTE:** New Seat Sub-Assembly (80457) will fit in old style valve with one piece seat.



# 2892 2.0" HYDRO-LOC VALVE

September, 2002

INDEX NO.	PART NO.	QTY. REQ.	DESCRIPTION
1	57321	1	"O" Ring for Actuator Shaft
2	63761	1	Actuator Shaft
2A	51256	1	Roll Pin (Secondary Stop)
3	17305	1	Valve Ball
4	57321	1	"O" Ring for Pivot Bolt
5	63703	1	Pivot Bolt
6	16796	1	Valve Body
7	63822	1	Seat
8	57338	1	"O" Ring for Seat
9	58883	1	Seat Retainer
10	57296	1	"O" Ring for Retainer
11	57416	2	"O" Ring for Body
12	20060	2	#01 End Cap, 2.0" NPT Female
12A	20095	1	#02 End Cap, 2.5" NPT Female
13	61030	8	Bolt for End Caps
14	61036	1	Cap Screw
15	71082	1	Handle Washer
16	25075	1	Handle Disc
16A	11515	1	Actuator Clip
16B	61794	1	Lock Spring
17	16782	1	"D" Handle (Remote)
18	16536	2	Stop Bracket
18A	61076	4	Cap Screw
19	16781	1	"F" Handle Body
20	51243	1	Roll Pin
21	61520	1	Handle Rod
22	42022	1	Knob
23	25158	1	#03 End Cap, 2.0" NPT Female
24	51890	1	.250" NPT Pipe Plug
25	51881	1	.750" NPT Pipe Plug
26	20059	1	#31 End Cap, 2.5" NST Male
26A	20059	1	#41 End Cap, 2.5" BSP Male
27	20053	1	#30 End Cap, 2.0" NST Male
27A	20088	1	#40 End Cap, 2.0" NPT Male
28	20104	1	#11 End Cap, 2.5" B/G
29	15016	52	.187" Diam. Brass Ball
30	61222	1	Set Screw, CP
31	62919	1	Swivel, 2.5" NST, CP
32	62726	1	Strainer
33	33083	1	Rubber Gasket
34	20061	1	#09 End Cap, 2.0" Solder Joint
35	25195001	1	#34 End Cap (2.5" NHT Male) 3.0" L
36	25194001	1	#43 End Cap (2.0" NPT Male) 3.0" L
37	25176001	1	#55 End Cap, 90° (1.5" Victaulic) 6.750" L
38	20147001	1	#50 End Cap (2.0" Victaulic)
39	25153001	1	#52 End Cap (2.0" Victaulic)
40	25183001	1	#28 End Cap, 2.5" Waterous or Hale Flange, 6.0" L
41	25182001	1	#24 End Cap, 90° Waterous or Hale Flange, 8.0" L
42	25181001	1	#20 End Cap, Waterous or Hale Flange, 2.750" L
43	25169001	1	#89 End Cap (2.0" NPT Female) w/ Boss for Flowmeter (Class 1), 3.0" L

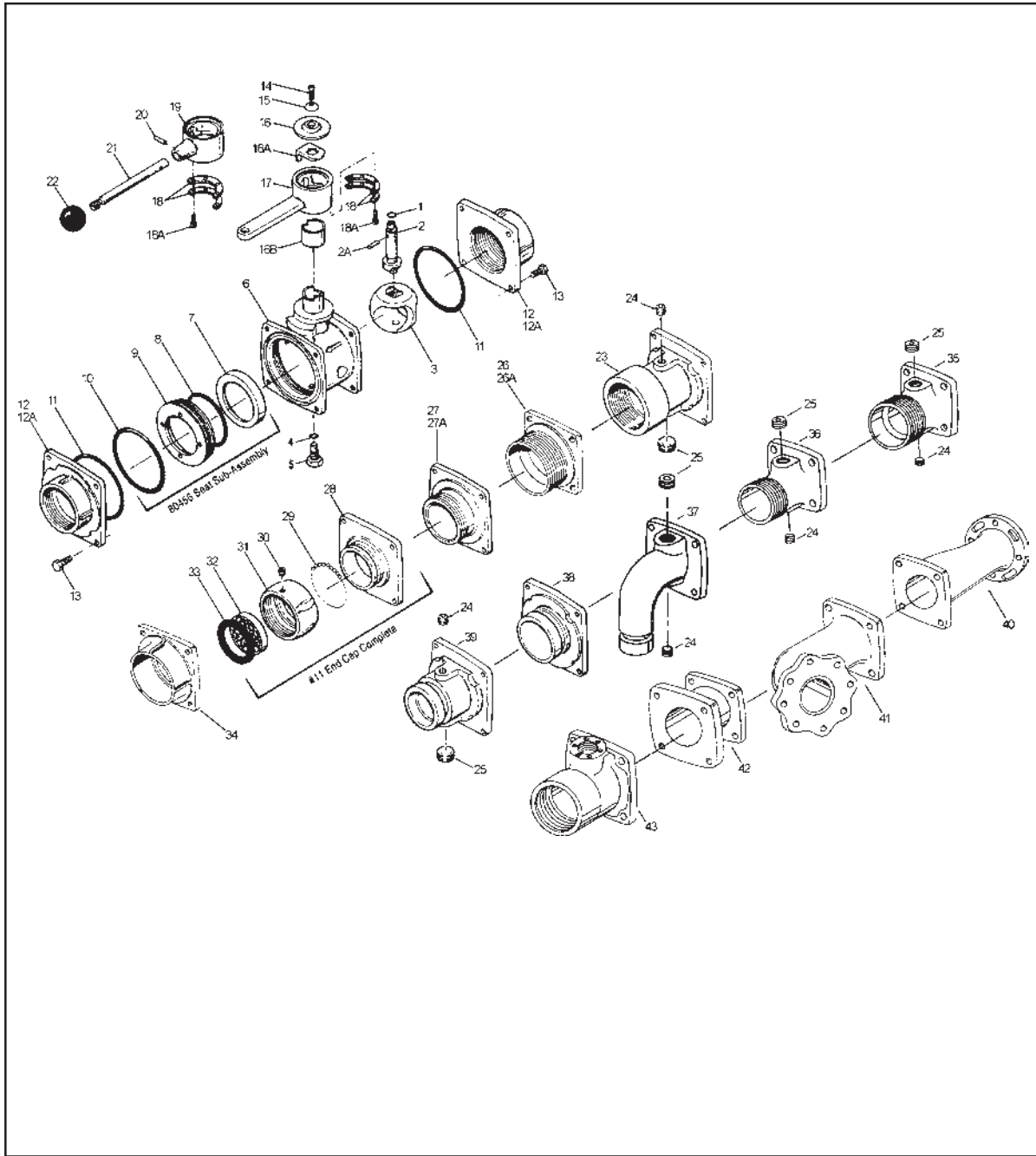
Body Sub-Assy.

\*80456 Seat Sub-Assembly

80859 "F" Handle Sub-Assembly

80456 Seat Sub-Assembly

#11 End Cap Complete



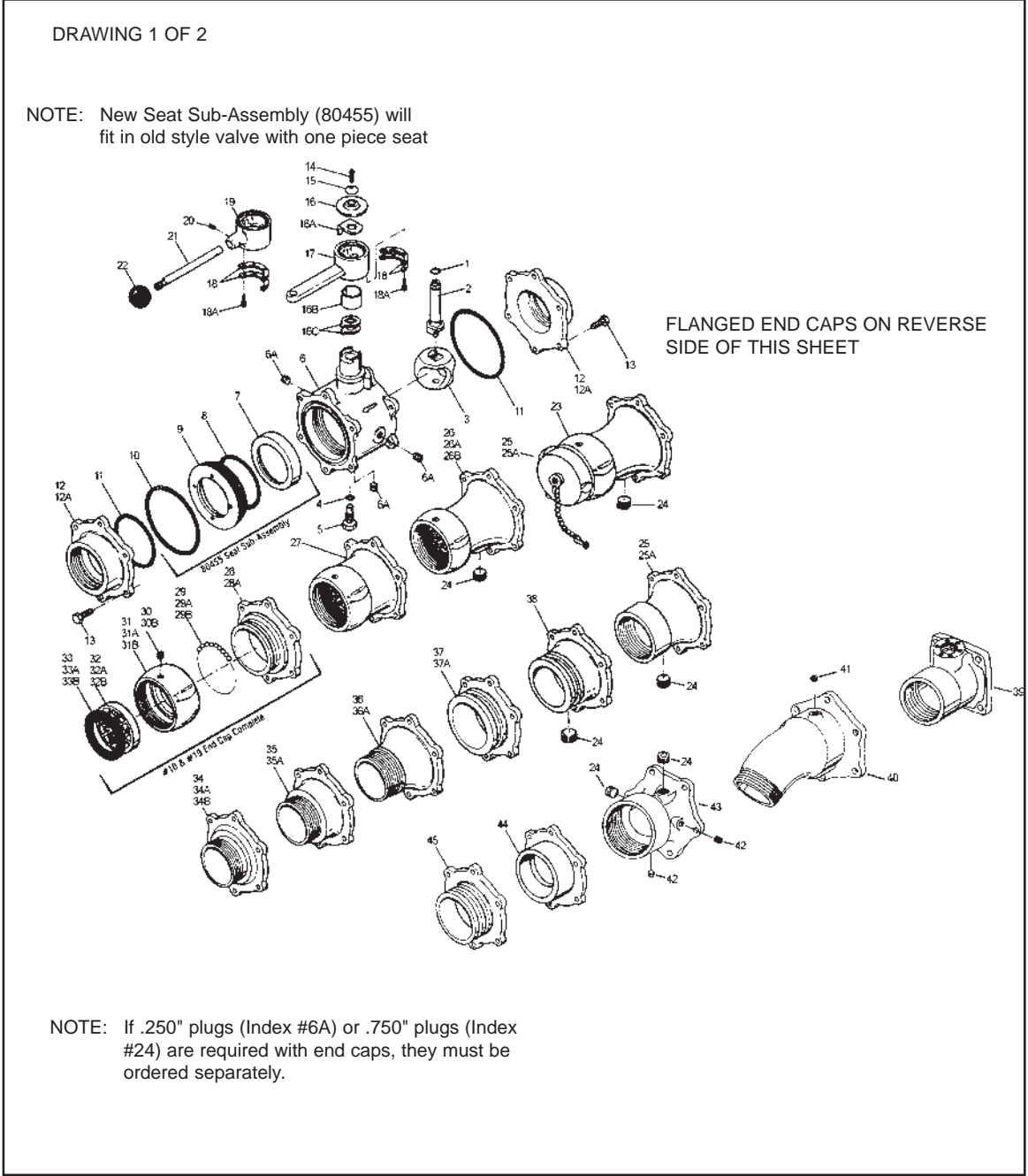
\*NOTE: New Seat Sub-Assembly (80456) will fit in old style valve with one piece seat.

2892

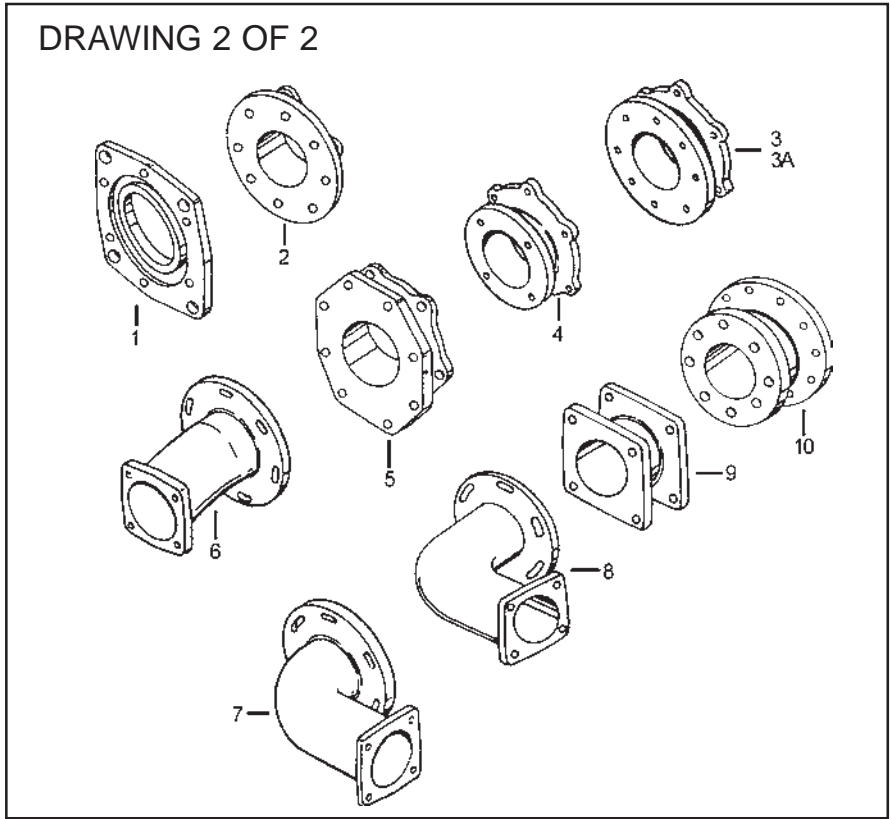
# 2893 3.0" HYDRO-LOC VALVE (Drawing 1 of 2)

September, 2002

INDEX NO.	PART NO.	QTY. REQ.	DESCRIPTION
1	57295	1	"O" Ring for Actuator Shaft
2	63752	1	Actuator Shaft
3	15080	1	Valve Ball
4	57295	1	"O" Ring for Pivot Bolt
5	16406	1	Pivot Bolt
6	16288	1	Valve Body
6A	51890	3	Plug, .250" NPT
7	63823	1	Seat
8	57307	1	"O" Ring for Seat
9	58885	1	Seat Retainer
10	57308	1	"O" Ring for Retainer
11	57363	2	"O" Ring for Body
12	20086	2	#01 End Cap, 3.0" NPT Female
12A	20135	1	#02 End Cap, 3.5" NPT Female
13	16375	12	Bolt for End Caps
14	61036	1	Cap Screw
15	71082	1	Handle Washer
16	25074	1	Handle Disc
16A	11514	1	Actuator Clip
16B	61793	1	Lock Spring
16C	51812	1	Stop Plate (Secondary)
17	15806	1	"D" Handle Body (Remote)
18	16534	2	Stop Bracket
18A	61046	4	Cap Screw
19	15807	1	"F" Handle Body
20	51246	1	Roll Pin
21	61528	1	Handle Rod
22	42023	1	Knob
23	02576S	1	#98 End Cap, 3.0" NST Female w/Plug
24	51881	1	Plug, .750" NPT Cad. Pl.
25	20117	1	#03 End Cap, 3.0" NPT Female
25A	25114	1	#04 End Cap, 3.5" NPT Female
26	20098	1	#13 End Cap, 3.0" BG (Swivel Group "A")
26A	20105	1	#14 End Cap, 3.5" BG (Swivel Group "B")
26B	20127	1	#17 End Cap, 2.5" BG (Swivel Group "C")
27	20133	1	#11 End Cap, 3.5" BG (Swivel Group "B")
28	20128	1	#19 End Cap, 2.5" BG (Swivel Group "C")
28A	20106	1	#10 End Cap, 3.0" BG
29	15016	58	.187" Diam. Brass Ball
30	61221	1	Set Screw, CP
31	63071	1	Swivel, 3.0" NST, CP
32	62725	1	Strainer, 3.0"
33	33094	1	Rubber Gasket, 3.0"
29A	15016	71	.187" Diam. Brass Ball
30	61221	1	Set Screw, CP
31A	63311	1	Swivel, 3.5" NST, CP
32A	62716	1	Strainer, 3.5"
33A	33186	1	Rubber Gasket, 3.5"
29B	15016	52	.187" Diam. Brass Ball
30A	61222	1	Set Screw, CP
31B	62919	1	Swivel, 2.5" NST, CP
32B	62726	1	Strainer, 2.5"
33B	33083	1	Rubber Gasket, 2.5"
34	20093	1	#30 End Cap, 3.0" NST Male
34A	20126	1	#40 End Cap, 3.0" NPT Male
34B	20138	1	#42 End Cap, 4.0" NPT Male
35	20114	1	#31 End Cap, 3.5" NST Male
35A	25091	1	#41 End Cap, 3.5" NPT Male
36	20097	1	#33 End Cap, 3.0" NST Male
36A	20116	1	#34 End Cap, 3.5" NST Male
37	25110	1	#50 End Cap, 3.0" Victaulic
37A	20124	1	#51 End Cap, 4.0" Victaulic
38	25151	1	#52 End Cap, 3.0" Victaulic
39	25170001	1	#89 End Cap, 3.0" NPT Female w/ boss for Flowmeter (Class 1), 4.125" L
40	25158001	1	#37 End Cap, 2.5" Droop Snoot, 6.724" L
41	51885000	1	Plug, .250" NPT - Brass
42	51890000	1	Plug, .250" NPT - Brass
43	25178001	1	#05 End Cap, 4" NPT Female
44	20110001	1	#09 End Cap, 3.0" Solder Joint
45	20137001	1	#60 End Cap, 3.5" OD Shank



2893



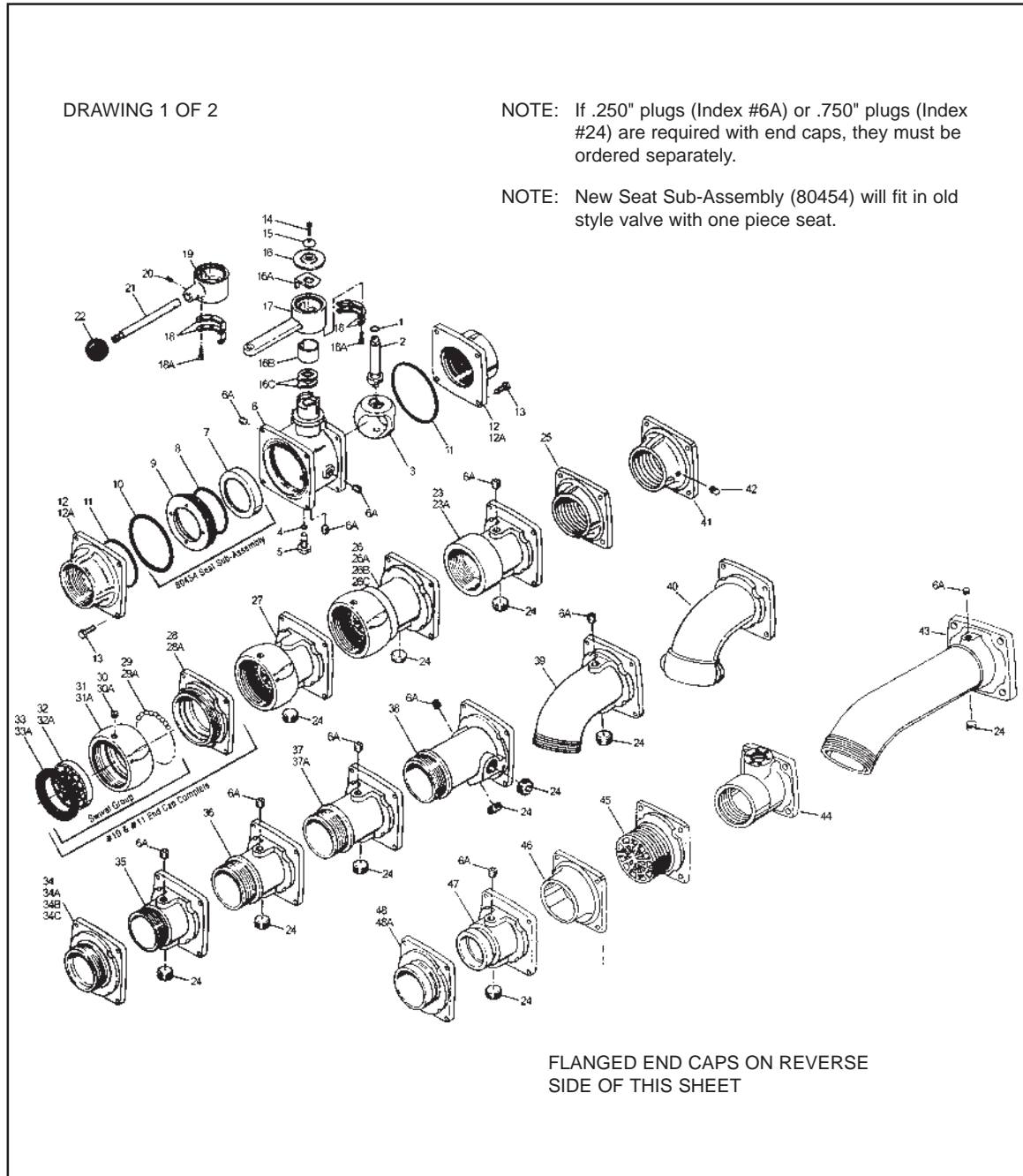
INDEX NO.	PART NO.	QTY. REQ.	DESCRIPTION
1	25144**	1	#53 End Cap, 7.778" BC
2	02576F††	1	#26 End Cap, 4.0" - 150# Flange
3	20141*	1	#22 End Cap, 5.750" BC
3A	25098**	1	#29 End Cap, 5.500" BC
4	25099†	1	#20 End Cap, 4.375" BC
5	25140**	1	#23 End Cap, 6.625" BC
6	25096†	1	#28 End Cap, 4.375" BC (Offset)
7	25097†	1	#25 End Cap, 4.375" BC (90° Elbow)
8	25107†	1	#24 End Cap, 4.375" BC (90° Elbow)
9	25163001	1	#20-1 End Cap, 4.250" BC
10	25161001	1	#54 End Cap, 5.500" BC (4 degree)

\* Flange for Hale Pump  
 \*\* Flange for Waterous Pump  
 † Flange for Hale & Waterous Pumps  
 †† Parent Part #02576231

# 2896 2.5" HYDRO-LOC VALVE (Drawing 1 of 2)

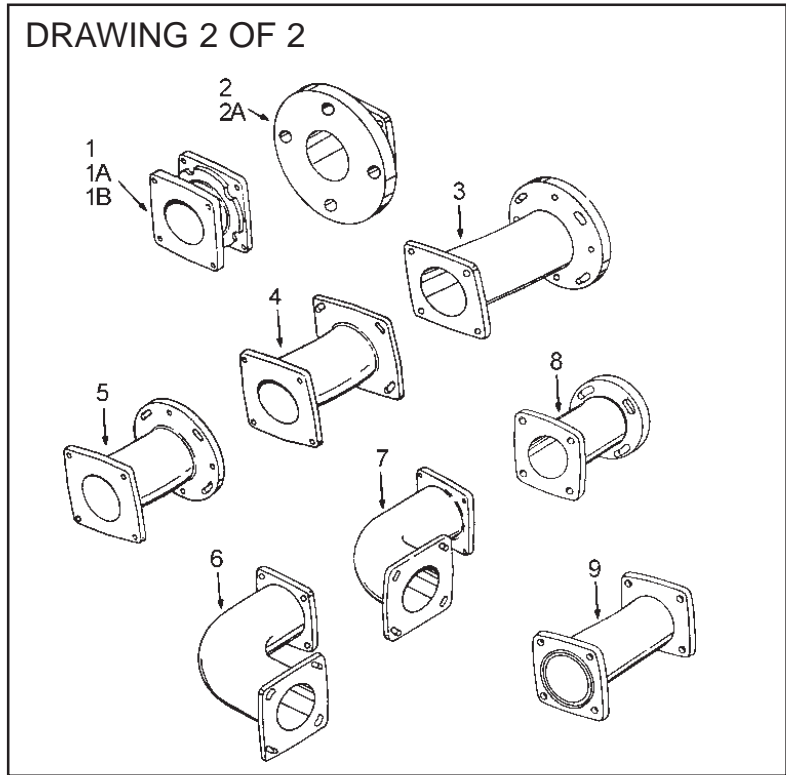
September, 2002

INDEX NO.	PART NO.	QTY.	DESCRIPTION
1	57295	1	"O" Ring for Actuator Shaft
2	61478	1	Actuator Shaft
3	15079	1	Valve Ball
4	57321	1	"O" Ring for Pivot Bolt
5	61192	1	Pivot Bolt
6	16270	1	Valve Body
6A	51890	3	Plug, .250" NPT
7	63820	1	Seat
8	57475	1	"O" Ring for Seat
9	58881	1	Seat Retainer
10	57313	1	"O" Ring for Retainer
11	57378	2	"O" Ring for Body
12	20073	2	#01 End Cap, 2.5" NPT Female
12A	20142	1	#02 End Cap, 3.0" NPT Female
13	16375	8	Bolt for End Caps
14	61036	1	Cap Screw
15	71082	1	Handle Washer
16	25074	1	Handle Disc
16A	11514	1	Actuator Clip
16B	61793	1	Lock Spring
16C	51812	2	Stop Plate (Secondary)
17	15806	1	"D" Handle Body (Remote)
18	16534	2	Stop Bracket
18A	61046	4	Cap Screw
19	15807	1	"F" Handle Body
20	51246	1	Roll Pin
21	61528	1	"F" Handle Rod
22	42023	1	Knob
23	20070	1	#03 End Cap, 2.5" NPT Female
23A	25092	1	#04 End Cap, 3.0" NPT Female
24	51881	1	Plug, .250" NPT
25	20054	1	#97 End Cap, 2.5" NPT Female
26	20068	1	#13 End Cap, 2.5" BG (Swivel Group "A")
26A	62919	1	#15 End Cap, 2.5" BG (Swivel Group "A")
26B	20099	1	#14 End Cap, 3.0" BG (Swivel Group "B")
26C	63071	1	#16 End Cap, 3.0" BG (Swivel Group "B")
27	20085	1	#12 End Cap, 2.5" BG (Swivel Group "A")
28	20064	1	#10 End Cap, 2.5" BG
29	15016	52	.187" Diam. Brass Ball
30	61222	1	Set Screw, CP
31	62919	1	Swivel, 2.5" NST, CP
32	62726	1	Strainer, 2.5"
33	33083	1	Rubber Gasket, 2.5"
28A	20107	1	#11 End Cap, 3.0" BG
29A	15016	58	.187" Diam. Brass Ball
30A	61221	1	Set Screw, CP
31A	63071	1	Swivel, 3.0" NST, CP
32A	62725	1	Strainer, 3.0"
33A	33094	1	Rubber Gasket, 3.0"
34	20063	1	#30 End Cap, 2.5" NST Male
34A	20074	1	#40 End Cap, 2.5" NPT Male
34B	20112	1	#41 End Cap, 3.0" NPT Male
34C	25094	1	#31 End Cap, 3.0" NST Male
35	20091	1	#32 End Cap, 2.5" NST Male
36	20067	1	#33 End Cap, 2.5" NST Male
37	20100	1	#35 End Cap, 2.5" NST Male
37A	20139	1	#44 End Cap, 2.5" NPT Male
38	20072	1	#36 End Cap, 2.5" NST Male
39	20146	1	#37 End Cap, 2.5" NST Male
40	25118	1	#18 End Cap, 2.5" NST Female
41	25100	1	#95 End Cap, 2.5" NPT Female
42	51891	1	.125" NPT Pipe Plug
43	25184001	1	#37-1 End Cap, 2.5" NH Male, 12.312" L
44	25168001	1	#89 End Cap, 2.5" NPT Female w/ Boss for Flowmeter (Class 1), 4.000"L
45	20066	1	#96 End Cap, 2.5" NST Male w/Strainer
46	20065	1	#09 End Cap, 2.5" Solder Joint
47	25119	1	#52 End Cap, 2.5" Victaulic
48	20052	1	#50 End Cap, 2.5" Victaulic
48A	25113	1	#51 End Cap, 3.0" Victaulic



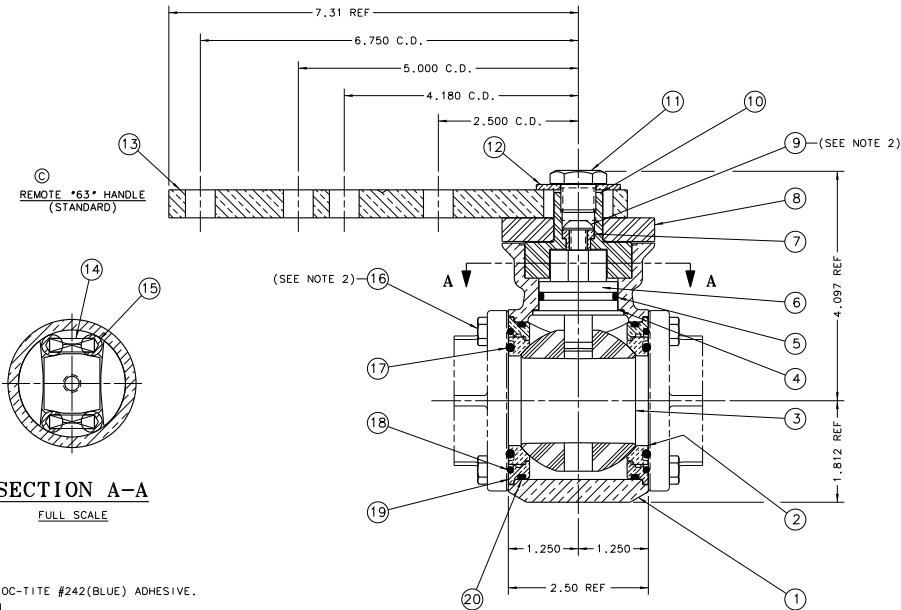
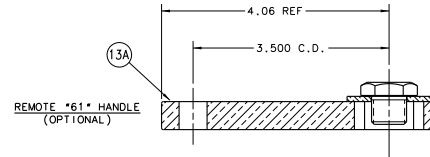
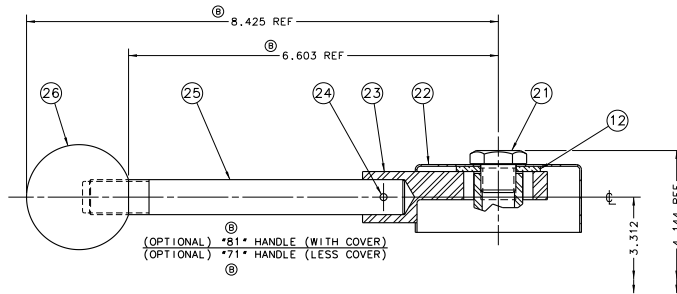
FLANGED END CAPS ON REVERSE SIDE OF THIS SHEET

2896



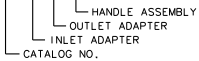
INDEX NO.	PART NO.	QTY. REQ.	DESCRIPTION
1	20050*	1	#20 End Cap, 4.375" BC
1A	20118	1	#21 End Cap, 4.375" BC (Seagrave)
1B	25112	1	#22 End Cap, 4.375" BC (Darley)
2	20148	1	#94 End Cap, 2.5" - 150# Flange (FF)
2A	20075	1	#23 End Cap, 2.5" - 300# Flange (RF)
3	25108*	1	#26 End Cap, 4.375" BC (Offset)
4	25093*	1	#27 End Cap, 4.375" BC (Offset)
5	25095*	1	#28 End Cap, 4.375" BC (Offset)
6	25106*	1	#24 End Cap, 4.375" BC (90° Elbow)
7	25090*	1	#25 End Cap, 4.375" BC (90° Elbow)
8	25175001*	1	#20-2 End Cap, 4.275" BC
9	25157001*	1	#20-1 End Cap, 4.375" BC

\* Flange End Caps for Hale or Waterous Pumps

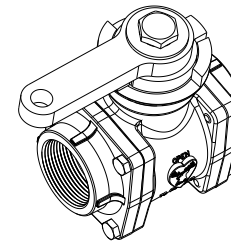


**SECTION A-A**  
FULL SCALE

2) SECURE THD'S WITH LOC-TITE #242(BLUE) ADHESIVE.  
1) CATALOG INFORMATION  
EXAMPLE: 2915-09-01-61



NOTES:



26	42023000	KNOB-HANDLE	1
25	61530001	ROD-HANDLE (S/S)	1
24	51246000	PIN-ROLL 0.125 DIA X .875 LG X .028 THK	1
23	36318000	HANDLE-VALVE *70-80*	1
22	23515004	COVER-HANDLE	1
21	44256000	LABEL-CAUTION (CCW)	1
21	44257000	LABEL-CAUTION (CW)	1
21	16418005	BOLT-HANDLE (S/S)	1
12	71156001	WASHER-FLAT (BRASS)	1
⑧ (OPTIONAL) *81* HANDLE (WITH COVER) CP PHANTOM #99315104			

26	42023000	KNOB-HANDLE	1
25	61530001	ROD-HANDLE (S/S)	1
24	51246000	PIN-ROLL 0.125 DIA X .875 LG X .028 THK	1
23	36318000	HANDLE-VALVE *70-80*	1
12	71156001	WASHER-FLAT (BRASS)	1
11	16418001	BOLT-HANDLE	1
⑧ (OPTIONAL) *71* HANDLE (W/OUT COVER) PHANTOM #99315101			

13A	36161000	HANDLE-REMOTE *61*	1
12	71156001	WASHER-FLAT (BRASS)	1
11	16418001	BOLT-HANDLE (BRASS)	1
(OPTIONAL) REMOTE *61* HANDLE (PHANTOM #99317001)			

13	36169001	HANDLE-REMOTE *63*	1
12	71156001	WASHER-FLAT (BRASS)	1
11	16418001	BOLT-HANDLE (BRASS)	1
③ (STANDARD) REMOTE *63* HANDLE PHANTOM #99317301			

20	57339000	RING-O (#AS 568-146) 2.612 ID X 0.103 C/S	2
19	58892000	SEAT RETAINER (1.5)	2
18	57318000	RING-O (#AS 568-142) 2.362 ID X 0.103 C/S	2
17	57309000	RING-O (#AS 568-224) 1.734 ID X 0.130 C/S	2
16	63785000	SPRING-WASH (S/S) 0.250-20 X 0.750 LG HEX HD	8
15	51119001	LOCK PIN	4
14	62126000	SPRING-COIL	2
10	63765000	ACTUATOR-UPPER	1
9	64062000	SCREW-CAP (50C BUTTON HD) 0.312-18 X 0.750 LG 3/16	1
8	51815000	STOP PLATE	1
7	63596001	SPACER	1
6	63763001	ACTUATOR-LOWER (BRASS)	1
5	57396000	RING-O (#AS 568-124) 1.237 ID X 0.103 C/S	1
4	71188000	WASHER-TEFLON	1
3	17311000	BALL-VALVE (1.5) ACETAL	1
2	63855000	SEAT-VALVE (1.5) U.H.W.P.E.	2
1	16975001	BODY-VALVE (1.5)	1

VALVE HANDLE OPTIONS  
SEE DRAWING 98458000

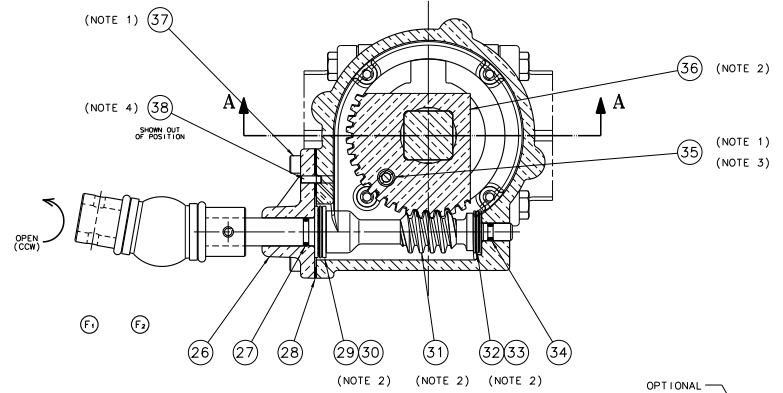
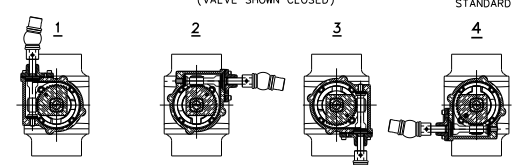
VALVE END CAP OPTIONS  
SEE DRAWING 98258000

D	11	OPTIONAL NOTE ADDED	CDW	0710	NO.	PART NO.	PART NAME	REQ.
C	14	11/17/17	CDW	0710	2	612	ID X 0.103 C/S	2
B	15	11/17/17	CDW	0710	2	362	ID X 0.103 C/S	2
A	16	11/17/17	CDW	0710	2	734	ID X 0.130 C/S	2
REV.	DATE	BY	APP'D	DATE	REV.	DATE	BY	APP'D
E	11/17/17	MS	BY	11/20/1989	1	2915	D	

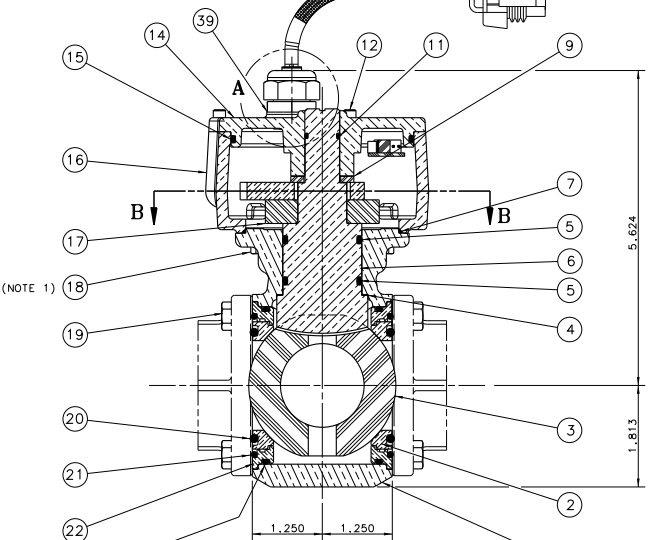
NUMBER (02915000 & 02915001) CAT #2915 REV-E

ITEM NO.	ITEM DESCRIPTION
02915200	2915-XX-XX-90 VALVE
02915210	2915-XX-XX-92 VALVE WITH POSITION INDICATOR LIGHT

**GEARCASE POSITION**  
(VALVE SHOWN CLOSED)

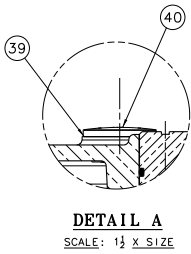


**SECTION B-B**

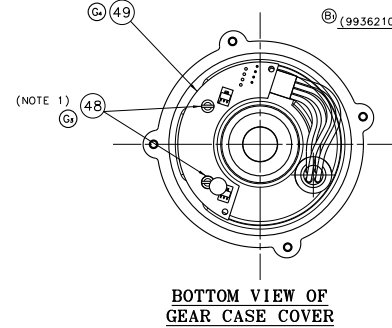


**SECTION A-A**

- 1) SECURE THREADS WITH "LOCTITE" ADHESIVE #242 (BLUE)
- 2) APPLY GENERAL PURPOSE PETROLEUM BASE GREASE.
- 3) FILE THREADS FLAT WITH GEAR SEGMENT SURFACE.
- 4) SECURE WITH "LOCTITE" RETAINING COMPOUND #601 (GREEN) IN ADAPTER ONLY.



**DETAIL A**  
SCALE: 1 1/2 X SIZE



**BOTTOM VIEW OF GEAR CASE COVER**

VALVE END CAP OPTIONS  
SEE DRAWING 98258000

SHOWN ON DRAWING 98303000

QTY	ITEM NO.	DESCRIPTION	REQ.
1	51497000	BEZEL - CHROME POS. IND.	1
1	36783000	HARNES - INTERMEDIATE	1
1	36781000	HARNES POWER	1
1	16905000	BAG-ZIP 9.5" X 13"	1
1	81383001	VALVE POSITION INDICATOR	1
1	57295000	O-RING (AS 568-016)	1
1	49	CIRCUIT BOARD ASSEMBLY	1
2	48	GASKET (TYP. 303 SS) #140 T .376 LG PAR NO	2
1	35	WASHER .376 LG #8-32 THD	1
1	13	HARNES-CONTROL	1

(E) (#81452001) POSITION INDICATOR LIGHTS  
OPTIONAL

QTY	ITEM NO.	DESCRIPTION	REQ.
1	40	CAP-PLUG	1
1	39	O-RING (AS 568-016)	1
2	57295000	O-RING (AS 568-016)	2
4	51122000	PIN - SOL ID	4
2	64074000	O-RING (AS 568-142) #152-32 X 0.5625 LG	2
1	33784001	GEAR-SEGMENTAL	1
1	57380000	O-RING (AS 568-008)	1
1	17702000	BEARING-THRUST (5/16)	1
2	71516000	WASHER-THRUST (5/16)	2
1	63941001	SHAFT - WORM 5/8	1
2	15698000	BEARING-THRUST (1/2)	2
2	71511000	WASHER-THRUST (1/2)	2
1	33804000	GASKET-MOTOR MOUNTING ADAPTER	1
1	57298000	O-RING (AS 568-012)	1
1	10455001	ADAPTER - FLANGED	1
1	57339000	O-RING (AS 568-146)	2
2	58892001	RETAINER SEAT (1.5)	2
2	57318000	O-RING (AS 568-038)	2
2	57309000	O-RING (AS 568-124)	2
4	63785000	SREW-MACH (STNL STL) #10-24 X 0.750 LG HEX HD	4
8	18	SREW-MACH SS #10-24 X 0.750 LG HEX HD	8
1	51815000	PLATE-STOP	1
1	23584001	CASE-GEAR (SMALL)	1
1	57490000	O-RING (AS 568-151)	1
1	23535001	COVER-GEAR CASE (SMALL)	1
4	13	SREW-CAP (STNL STL) #8-32 X 0.500 LG SOC HD	4
1	57321000	O-RING (AS 568-014)	1
1	71514001	WASHER-THRUST	1
1	57474000	O-RING (AS 568-038)	1
1	65318001	SHAFT-ACTUATOR (LONG PIECE) BRASS	1
2	57396000	O-RING (AS 568-124)	2
1	471188000	WASHER-TFLON	1
1	17311000	BALL-VALVE (1.5) ACETAL	1
2	63855000	SEAL-VALVE (1.5) U.H.W.P.T.	2
1	16997001	BODY-VALVE (1.5)	1

J	P/N	QTY	REV	DATE	BY	DESCRIPTION	REQ.
J	63780000	8	001	01/11/00	C.E.R.	REVISED FROM 63780000 TO 63785000	8
H	64074000	2	001	01/11/00	C.E.R.	REVISED FROM 64074000 TO 64074000	2
I	51122000	4	001	01/11/00	C.E.R.	REVISED FROM 51122000 TO 51122000	4
K	57309000	2	001	01/11/00	C.E.R.	REVISED FROM 57309000 TO 57309000	2
L	57318000	2	001	01/11/00	C.E.R.	REVISED FROM 57318000 TO 57318000	2
M	57321000	1	001	01/11/00	C.E.R.	REVISED FROM 57321000 TO 57321000	1
N	57339000	2	001	01/11/00	C.E.R.	REVISED FROM 57339000 TO 57339000	2
O	57380000	1	001	01/11/00	C.E.R.	REVISED FROM 57380000 TO 57380000	1
P	57396000	2	001	01/11/00	C.E.R.	REVISED FROM 57396000 TO 57396000	2
Q	65318001	1	001	01/11/00	C.E.R.	REVISED FROM 65318001 TO 65318001	1
R	63785000	4	001	01/11/00	C.E.R.	REVISED FROM 63785000 TO 63785000	4
S	17311000	1	001	01/11/00	C.E.R.	REVISED FROM 17311000 TO 17311000	1
T	63855000	2	001	01/11/00	C.E.R.	REVISED FROM 63855000 TO 63855000	2
U	16997001	1	001	01/11/00	C.E.R.	REVISED FROM 16997001 TO 16997001	1

NUMBER (02915200 & 02915210) 2915-G REV-J

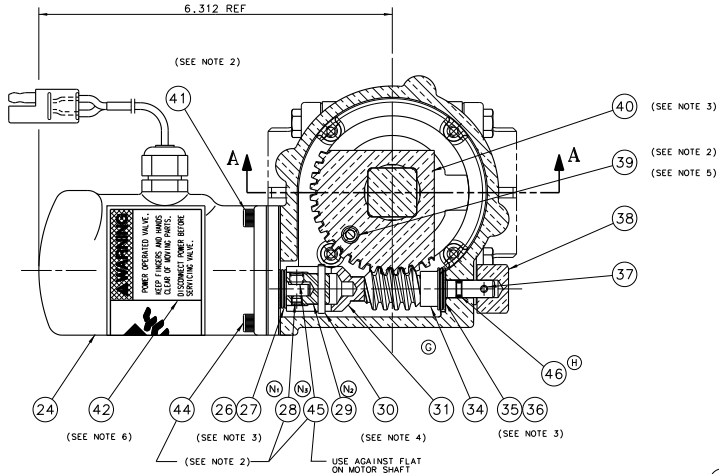
**ELKHART BRASS MFG. CO., INC.**  
ELKHART, INDIANA

VALVE - (1.5) FIRE APPARATUS  
(GEAR ACTUATOR)

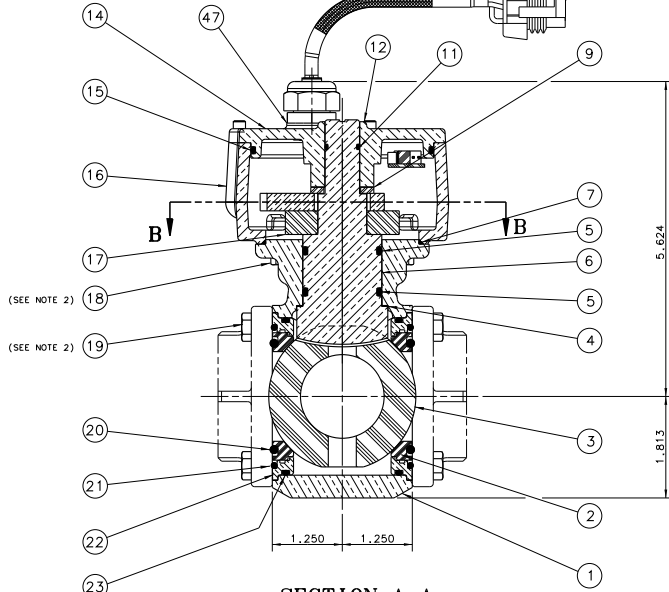
SCALE FULL DATE 8/22/95  
CAT. NO. 2915-G DWG. 518  
REV. BY E.C.R. DATE

REWORK INSTRUCTIONS:  
IF PLATE HAS A .010  
X PLATE THK. + .004  
X PLATE SEC. + .004  
X PLATE INCH. + .004  
X INCH. + .004

CADAM



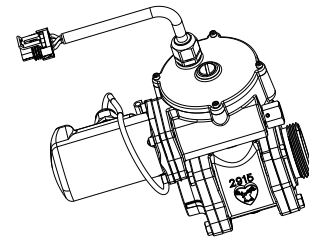
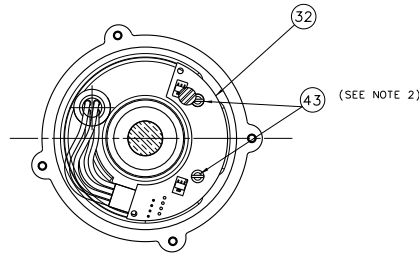
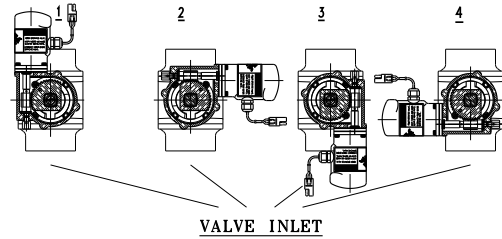
SECTION B-B



SECTION A-A

GEARCASE POSITION

(VALVE SHOWN CLOSED)



- ⑥) BEFORE APPLYING DECAL SURFACE MUST BE CLEANED W/RUBBING ALCOHOL OR OTHER NON RESIDUE CLEANER. ALSO, PREMASK SHOULD NOT BE REMOVED FROM DECAL.
- 5) FILE THREADS FLAT WITH GEAR SEGMENT SURFACE.
- 4) PIN MUST BE IN CENTER OF SHAFT COUPLING.
- 3) APPLY GENERAL PURPOSE PETROLEUM BASE GREASE.
- 2) SECURE THREADS WITH "LOCTITE" ADHESIVE #242 (BLUE)

02915100	2915-E-KK-WV-1517	#17 ELECTRIC VALVE WITH NEW CONTROLLER	
02915110	2920-E-KK-RK-B1	#17 ELECTRIC VALVE WITH OLD CONTROLLER	

(M)	NOT SHOWN	36793X00	HARNESS MOTOR POWER/SENSOR	1
(M)	NOT SHOWN	36779X00	HARNESS MODULE TO CONTROLLER	1
(M)	NOT SHOWN	81196000	OLD VALVE CONTROLLER	1
(M)	NOT SHOWN	81052000	SWITCH/INDICATOR MODULE	1

(M) OLD STYLE CONTROLLER OPTION

⑥ REFER TO DRAWINGS 98444000 & 98444010 FOR CONTROLLER & HARNESS OPTIONS

(H)		47	57295000	O-RING (#AS 568-016)	1
(H)		46	57380000	O-RING (#AS 568-008)	1
(M)		45	65219000	O-RING SET SS (CUP POINT)	1
(M)		44	64072000	O-RING (#AS 568-124)	3
(M)		43	65114000	SCREW-CAP (#2000 SERIES S-3)	2
(M)		42	25025000	DECAL-WARNING	1
(M)		41	61046000	SCREW-CAP (#300 SERIES S-3)	1
(M)		40	33784001	GEAR-SEGMENTAL	1
(M)		39	46051000	WASHER (# 0.31 x 0.67 LG #8-32 THD.)	1
(M)		38	47652001	NUT-VALVE (3/4 HEX)	1
(M)		37	51248000	PIN-ROLL 79-528-128-0625	1
(M)		36	17702000	BEARING-THRUST (5/16)	1
(M)		35	71516000	WASHER-THRUST (5/16)	2
(M)		34	63601001	SPACER	1
(M)		33	81264000	CIRCUIT BOARD ASSEMBLY	1
(M)		31	63935901	SHAFT-WORM	1
(M)		30	51071000	PIN-DRVLOC	1
(M)		29	20991001	COUPLING - SHAFT	1
(M)		28	65201000	SCREW-SET SS (CUP POINT) #10-32 X 0.125 LG. SOC HEX	1
(M)		27	17701000	BEARING-THRUST (1/4)	1
(M)		26	71515000	WASHER-THRUST (1/4)	2
(M)		25			
(M)		24	81119001	ASSEMBLY GEAR/TORN 12-VDC (65.5:1 GEAR RATIO)	1
(M)		23	57339000	RING-O (#AS 568-146)	2
(M)		22	58892000	SEAT RETAINER (1.5)	2
(M)		21	57318000	RING-O (#AS 568-124)	2
(M)		20	57309000	RING-O (#AS 568-224)	2
(M)		19	63785000	SCREW-MACH (#STN STL) 0.250-200 0.160 HK HD	4
(M)		18	65111000	SCREW-MACH SS #10-24 X 0.500 LG HK HD	8
(M)		17	51815000	PLATE-STOP	1
(M)		16	23584001	CASE-GEAR (SMALL) N/5	1
(M)		15	57490000	RING-O (#AS 568-151)	1
(M)		14	23535001	COVER-GEAR CASE (SMALL)	1
(M)		13	36809000	HARNESS-CONTROL	1
(M)		12	64083000	SCREW-CAP (#STN STL) #8-32 X 0.500 LG SOC HD	4
(M)		11	57321000	O-RING (#AS 568-124)	1
(M)		10		5.489 ID X 0.070 C/S	1
(M)		9	71514001	WASHER-THRUST	1
(M)		8			
(M)		7	57474000	O-RING (#AS 568-038)	1
(M)		6	65318001	SHAFT-ACTUATOR	1
(M)		5	57396000	O-RING (#AS 568-124)	2
(M)		4	71188000	WASHER-TEFLON	1
(M)		3	17311000	BALL-VALVE (1.5) ACETAL	1
(M)		2	63855000	SEAT-VALVE (1.5) U.H.W.P.E	2
(M)		1	16997001	BODY-VALVE (1.5)	1

NO.	PART NO.	PART NAME	REQ.
<b>ELKHART BRASS MFG. CO., INC.</b> ELKHART, INDIANA VALVE & FIRE APPARATUS WITH 1.5 BALL			
REV.	MSS	BY E.C.N.	REV.

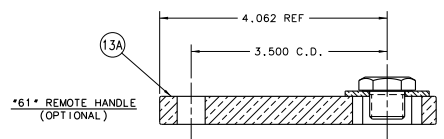
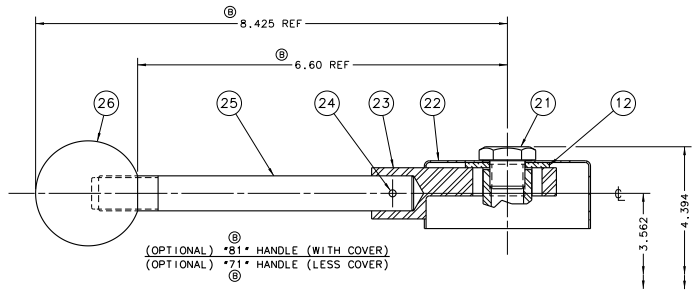
  

DATE	DESCRIPTION	BY	REV.
01/11/92	10) ADDD #1230500 O-RING	PAE	0210
01/11/92	11) REMOVED #1230500 O-RING	PAE	0210
01/11/92	12) REMOVED VALVE CONTROLLER	ENC	0310
01/11/92	13) REMOVED VALVE CONTROLLER	ENC	0310
01/11/92	14) REMOVED VALVE CONTROLLER	ENC	0310
01/11/92	15) REMOVED VALVE CONTROLLER	ENC	0310
01/11/92	16) REMOVED VALVE CONTROLLER	ENC	0310
01/11/92	17) REMOVED VALVE CONTROLLER	ENC	0310
01/11/92	18) REMOVED VALVE CONTROLLER	ENC	0310
01/11/92	19) REMOVED VALVE CONTROLLER	ENC	0310
01/11/92	20) REMOVED VALVE CONTROLLER	ENC	0310
01/11/92	21) REMOVED VALVE CONTROLLER	ENC	0310
01/11/92	22) REMOVED VALVE CONTROLLER	ENC	0310
01/11/92	23) REMOVED VALVE CONTROLLER	ENC	0310
01/11/92	24) REMOVED VALVE CONTROLLER	ENC	0310
01/11/92	25) REMOVED VALVE CONTROLLER	ENC	0310
01/11/92	26) REMOVED VALVE CONTROLLER	ENC	0310
01/11/92	27) REMOVED VALVE CONTROLLER	ENC	0310
01/11/92	28) REMOVED VALVE CONTROLLER	ENC	0310
01/11/92	29) REMOVED VALVE CONTROLLER	ENC	0310
01/11/92	30) REMOVED VALVE CONTROLLER	ENC	0310
01/11/92	31) REMOVED VALVE CONTROLLER	ENC	0310
01/11/92	32) REMOVED VALVE CONTROLLER	ENC	0310
01/11/92	33) REMOVED VALVE CONTROLLER	ENC	0310
01/11/92	34) REMOVED VALVE CONTROLLER	ENC	0310
01/11/92	35) REMOVED VALVE CONTROLLER	ENC	0310
01/11/92	36) REMOVED VALVE CONTROLLER	ENC	0310
01/11/92	37) REMOVED VALVE CONTROLLER	ENC	0310
01/11/92	38) REMOVED VALVE CONTROLLER	ENC	0310
01/11/92	39) REMOVED VALVE CONTROLLER	ENC	0310
01/11/92	40) REMOVED VALVE CONTROLLER	ENC	0310
01/11/92	41) REMOVED VALVE CONTROLLER	ENC	0310
01/11/92	42) REMOVED VALVE CONTROLLER	ENC	0310
01/11/92	43) REMOVED VALVE CONTROLLER	ENC	0310
01/11/92	44) REMOVED VALVE CONTROLLER	ENC	0310
01/11/92	45) REMOVED VALVE CONTROLLER	ENC	0310
01/11/92	46) REMOVED VALVE CONTROLLER	ENC	0310
01/11/92	47) REMOVED VALVE CONTROLLER	ENC	0310
01/11/92	48) REMOVED VALVE CONTROLLER	ENC	0310
01/11/92	49) REMOVED VALVE CONTROLLER	ENC	0310
01/11/92	50) REMOVED VALVE CONTROLLER	ENC	0310

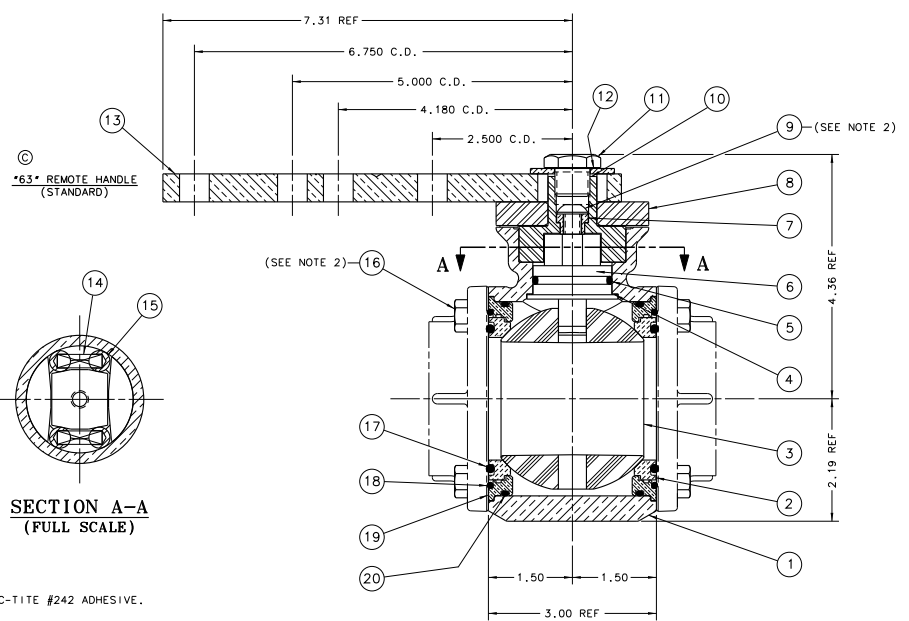
  

DATE	DESCRIPTION	BY	REV.
01/11/92	51) REMOVED VALVE CONTROLLER	ENC	0310
01/11/92	52) REMOVED VALVE CONTROLLER	ENC	0310
01/11/92	53) REMOVED VALVE CONTROLLER	ENC	0310
01/11/92	54) REMOVED VALVE CONTROLLER	ENC	0310
01/11/92	55) REMOVED VALVE CONTROLLER	ENC	0310
01/11/92	56) REMOVED VALVE CONTROLLER	ENC	0310
01/11/92	57) REMOVED VALVE CONTROLLER	ENC	0310
01/11/92	58) REMOVED VALVE CONTROLLER	ENC	0310
01/11/92	59) REMOVED VALVE CONTROLLER	ENC	0310
01/11/92	60) REMOVED VALVE CONTROLLER	ENC	0310
01/11/92	61) REMOVED VALVE CONTROLLER	ENC	0310
01/11/92	62) REMOVED VALVE CONTROLLER	ENC	0310
01/11/92	63) REMOVED VALVE CONTROLLER	ENC	0310
01/11/92	64) REMOVED VALVE CONTROLLER	ENC	0310
01/11/92	65) REMOVED VALVE CONTROLLER	ENC	0310
01/11/92	66) REMOVED VALVE CONTROLLER	ENC	0310
01/11/92	67) REMOVED VALVE CONTROLLER	ENC	0310
01/11/92	68) REMOVED VALVE CONTROLLER	ENC	0310
01/11/92	69) REMOVED VALVE CONTROLLER	ENC	0310
01/11/92	70) REMOVED VALVE CONTROLLER	ENC	0310
01/11/92	71) REMOVED VALVE CONTROLLER	ENC	0310
01/11/92	72) REMOVED VALVE CONTROLLER	ENC	0310
01/11/92	73) REMOVED VALVE CONTROLLER	ENC	0310
01/11/92	74) REMOVED VALVE CONTROLLER	ENC	0310
01/11/92	75) REMOVED VALVE CONTROLLER	ENC	0310
01/11/92	76) REMOVED VALVE CONTROLLER	ENC	0310
01/11/92	77) REMOVED VALVE CONTROLLER	ENC	0310
01/11/92	78) REMOVED VALVE CONTROLLER	ENC	0310
01/11/92	79) REMOVED VALVE CONTROLLER	ENC	0310
01/11/92	80) REMOVED VALVE CONTROLLER	ENC	0310
01/11/92	81) REMOVED VALVE CONTROLLER	ENC	0310
01/11/92	82) REMOVED VALVE CONTROLLER	ENC	0310
01/11/92	83) REMOVED VALVE CONTROLLER	ENC	0310
01/11/92	84) REMOVED VALVE CONTROLLER	ENC	0310
01/11/92	85) REMOVED VALVE CONTROLLER	ENC	0310
01/11/92	86) REMOVED VALVE CONTROLLER	ENC	0310
01/11/92	87) REMOVED VALVE CONTROLLER	ENC	0310
01/11/92	88) REMOVED VALVE CONTROLLER	ENC	0310
01/11/92	89) REMOVED VALVE CONTROLLER	ENC	0310
01/11/92	90) REMOVED VALVE CONTROLLER	ENC	0310
01/11/92	91) REMOVED VALVE CONTROLLER	ENC	0310
01/11/92	92) REMOVED VALVE CONTROLLER	ENC	0310
01/11/92	93) REMOVED VALVE CONTROLLER	ENC	0310
01/11/92	94) REMOVED VALVE CONTROLLER	ENC	0310
01/11/92	95) REMOVED VALVE CONTROLLER	ENC	0310
01/11/92	96) REMOVED VALVE CONTROLLER	ENC	0310
01/11/92	97) REMOVED VALVE CONTROLLER	ENC	0310
01/11/92	98) REMOVED VALVE CONTROLLER	ENC	0310
01/11/92	99) REMOVED VALVE CONTROLLER	ENC	0310
01/11/92	100) REMOVED VALVE CONTROLLER	ENC	0310





USE ONE  
(NOT SHOWN)

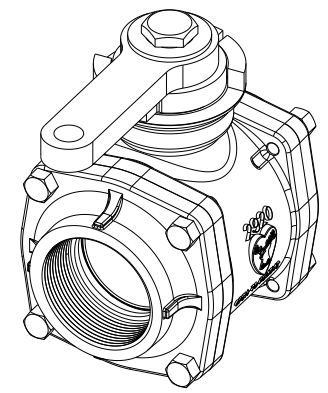


SECTION A-A  
(FULL SCALE)

2) SECURE THD'S WITH LOC-TITE #242 ADHESIVE.  
1) CATALOG INFORMATION  
EXAMPLE: 2920-09-31-61



NOTES:



VALVE HANDLE OPTIONS  
SEE DRAWING 98458000

VALVE END CAP OPTIONS  
SEE DRAWING 98259000

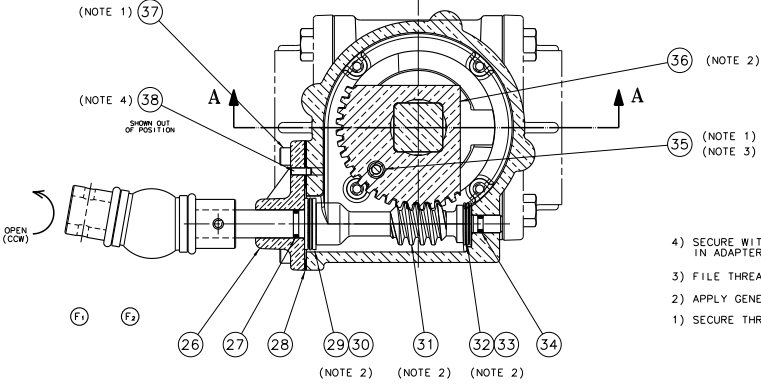
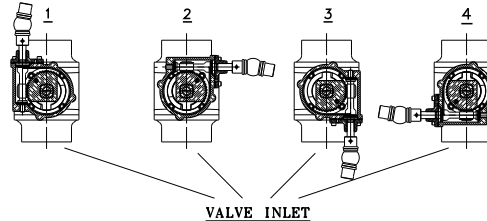
26	42023000	KNOB-HANDLE	1	
(B)	25	61530001	ROD-HANDLE (S/S)	1
24	51246000	PIN-ROLL 0.125 DIA X .875 LG X .028 THK	1	
23	36318000	HANDLE-VALVE *70-80*	1	
22	23515004	COVER-HANDLE	1	
	44256000	LABEL-CAUTION (CCW)	1	
	44257000	LABEL-CAUTION (CW)	1	
21	16418005	BOLT-HANDLE (S/S)	1	
12	71156001	WASHER-FLAT (BRASS)	1	
(B) (OPTIONAL)	*81* HANDLE (WITH COVER)	PHANTOM #99315104	CP	
(B) (OPTIONAL)	*71* HANDLE (W/OUT COVER)	PHANTOM #99315101		
13A	36161000	HANDLE-REMOTE *61*	1	
12	71156001	WASHER-FLAT (BRASS)	1	
11	16418001	BOLT-HANDLE (BRASS)	1	
(OPTIONAL)	REMOTE *61* HANDLE	PHANTOM #99317001		
13	36169001	HANDLE-REMOTE *63*	1	
12	71156001	WASHER-FLAT (BRASS)	1	
11	16418001	BOLT-HANDLE (BRASS)	1	
(C) (STANDARD)	REMOTE *63* HANDLE	PHANTOM #99317001		
(D) (A)	20	57414000	RING-O (FAS 568-155)	2
(A)	19	58893001	RETAINER-SEAT (2.0)	2
(A)	18	57490000	RING-O (FAS 568-151)	2
(A)	17	57396000	RING-O (FAS 568-229)	2
(D)	16	61059000	SCREW-WASH (SINUS 511)	8
15	51119001	PIN-LOCK	4	
14	62126000	SPRING-COIL	2	
10	63765000	SHAFT-ACTUATOR UPPER	1	
9	64062000	SCREW-CAP (500 BUTTON HD)	1	
8	51815000	PLATE-STOP	1	
7	63596001	SPACER	1	
6	63763001	SHAFT-ACTUATOR (LOWER) BRASS	1	
5	57396000	RING-O (FAS 568-124)	1	
4	71188000	WASHER-TEFLON	1	
3	17312000	BALL-VALVE (2.0) ACETAL	1	
(A)	2	63856000	SEAL-VALVE (2.0) U.H.W.P.E.	2
	1	16974001	BODY-VALVE (2.0)	1

NO.	PART NO.	PART NAME	REV.
ELKHART BRASS MFG. CO., INC.			
VALVE-FIRE APPARATUS WITH (2.0) BALL			
REV.	DATE	BY	APP'D
1	10/7/1987	BY	APP'D
SCALE		FULL	DATE 10/7/1987
CAT. NO.		2920	PART NO. C
MATERIAL:		BRASS	BY C.C.N.
DRAWN BY		TAB	CHK'D BY KLP
DESIGNED BY		TAB	RELEASED TO PROD.
REV. 1		8/15/89	8/15/89
REV. 2		8/15/89	8/15/89

NUMBER (02920000 & 02920001) #2920 REV. D

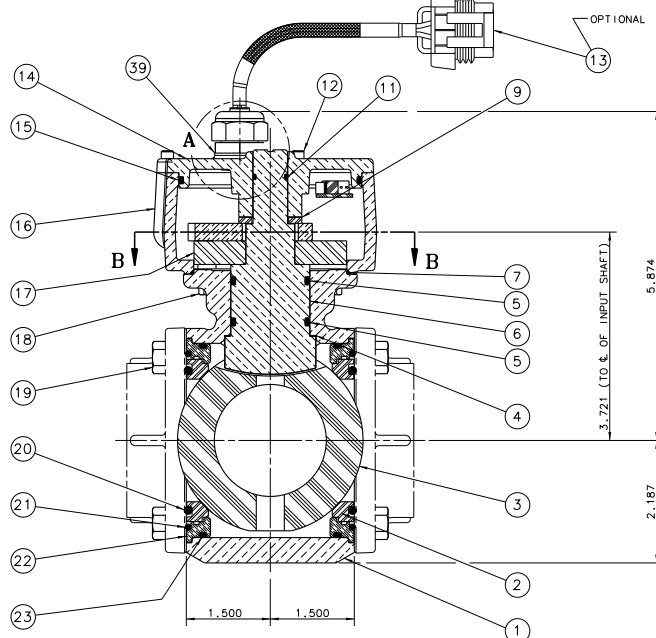
ITEM NO.	ITEM DESCRIPTION
02920300	2920-XX-XX-90 VALVE
02920310	2920-XX-XX-92 WITH POSITION INDICATOR LIGHT

**GEARCASE POSITION**  
(VALVE SHOWN CLOSED)

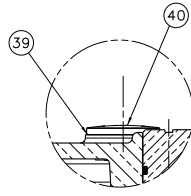


- 4) SECURE WITH \*LOCTITE\* RETAINING COMPOUND #601 (GREEN) IN ADAPTER ONLY.
- 3) FILE THREADS FLAT WITH GEAR SEGMENT SURFACE.
- 2) APPLY GENERAL PURPOSE PETROLEUM BASE GREASE.
- 1) SECURE THREADS WITH \*LOCTITE\* ADHESIVE #242 (BLUE)

**SECTION B-B**

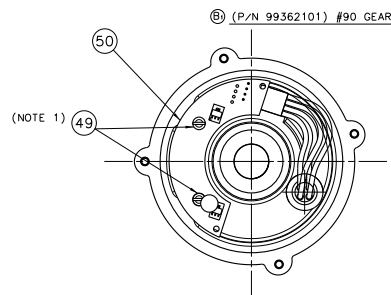


**SECTION A-A**



**DETAIL A**  
SCALE: 1/2 X SIZE

VALVE END CAP OPTIONS  
SEE DRAWING 98259000



**BOTTOM VIEW OF GEAR CASE COVER**

NOT SHOWN	ITEM NO.	ITEM DESCRIPTION	QTY
	51497000	BEZEL - CHROME POS. IND.	1
	36783X00	HARNES - INTERMEDIATE OPTIONAL LENGTHS	1
	36781000	HARNES POWER	1
	16805000	BAG-ZIP 9.5" X 13"	1
	81383001	VALVE POSITION INDICATOR	1
	57295000	O-RING (AS 568-016) 0.614-ID X 0.070-C/S	1
	81264000	CIRCUIT BOARD ASSEMBLY	1
	65114000	SCREW-MACH (TYPE 303 SS) #4-40 X .310 LG PAN HD	2
	46051000	WASHER 1/2 X 0.67 LG #8-32 THD	1
	36809000	HARNES-CONTROL	1

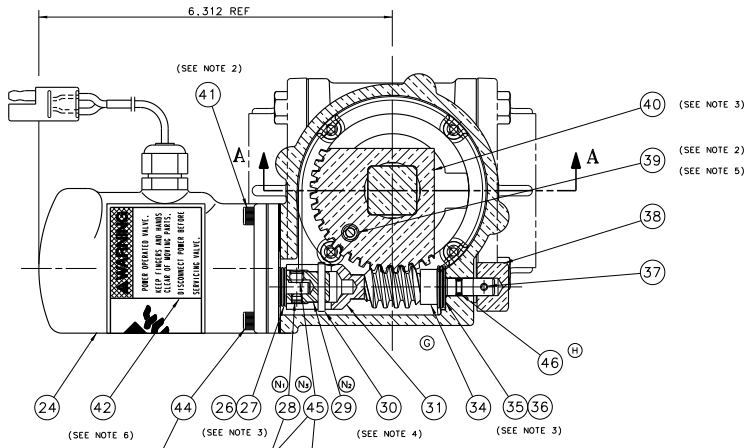
(#81462001) POSITION INDICATOR LIGHTS  
OPTIONAL

(#81031001) REMOTE OPERATOR  
6.0" HANDLE  
(SHOWN ON DRAWING 98303000)

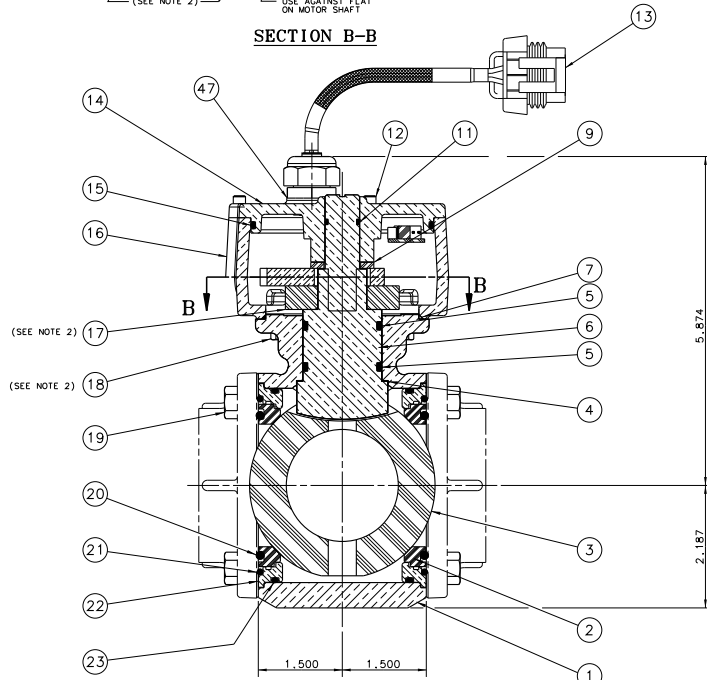
NOT SHOWN	ITEM NO.	ITEM DESCRIPTION	QTY
	23495000	CAP-PLUG	1
	57295000	O-RING (AS 568-016) 0.614-ID X 0.070-C/S	1
	51122000	PIN - SOLID	2
	64074000	SCREW-CAP (303 S/S) #10-32 X 0.500-LG, SOG HD	4
	33784001	GEAR-SEGMENTAL	1
	57380000	O-RING (AS 568-008) 0.176-ID X 0.070-C/S	1
	17702000	BEARING-THRUST (5/16)	1
	71516000	WASHER-THRUST (5/16)	2
	63941001	SHAFT-WORM S/S	1
	15698000	BEARING-THRUST (1/2)	1
	71511000	WASHER-THRUST (1/2)	2
	33804000	GASKET-MOTOR MOUNTING ADAPTER	1
	57298000	O-RING (AS 568-012) 0.312-ID X 0.100-C/S	1
	10455001	ADAPTER-FLANGED	1
	57414000	O-RING (AS 568-152) 3.237-ID X 0.103-C/S	2
	58893001	RETAINER SEAT (2.0)	2
	57490000	O-RING (AS 568-151) 2.987-ID X 0.103-C/S	2
	57386000	O-RING (AS 568-229) 0.328-ID X 0.135-C/S	2
	61059000	SCREW-MACH (STNLS STL) 0.312-ID X 0.750-LG, HEX HD	4
	65111000	SCREW-MACH (STNLS STL) #10-32 X 0.500 LG, HEX HD	8
	51815000	PLATE-STOP	1
	23584001	CASE-GEAR (SMALL)	1
	57490000	O-RING (AS 568-151) 2.987-ID X 0.103-C/S	1
	23535001	COVER-GEAR CASE (SMALL)	1
	64083000	SCREW-CAP (STNLS STL) #8-32 X 0.500-LG, SOG HD	4
	57321000	O-RING (AS 568-014) 0.489-ID X 0.070-C/S	1
	71514001	WASHER-THRUST	1
	57474000	O-RING (AS 568-038) 2.614-ID X 0.070-C/S	1
	65318001	SHAFT-ACTUATOR (LONG PILESS)	1
	57396000	O-RING (AS 568-124) 1.237-ID X 0.103-C/S	2
	71188000	WASHER-TEFLON	1
	17312000	BALL-VALVE (2.0) ACETAL	1
	63856000	SEAT-VALVE (2.0) U.H.W.P.E.	2
	16996001	BODY-VALVE (2.0)	1

NO.	PART NO.	PART NAME	REQ.
		<b>ELKHART BRASS MFG. CO., INC.</b>	
		VALVE - (2.0) FIRE APPARATUS (GEAR ACTUATOR)	
		SCALE FULL	DATE B/15/96
		2920-G	D

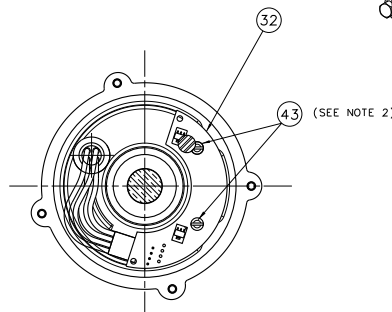
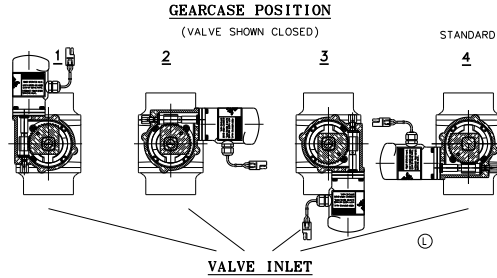
REV.	BY	DATE	DESCRIPTION
1	E.C.N.		ISSUED FOR PRODUCTION
2	E.C.N.		REVISION
3	E.C.N.		REVISION
4	E.C.N.		REVISION
5	E.C.N.		REVISION
6	E.C.N.		REVISION
7	E.C.N.		REVISION
8	E.C.N.		REVISION
9	E.C.N.		REVISION
10	E.C.N.		REVISION
11	E.C.N.		REVISION
12	E.C.N.		REVISION
13	E.C.N.		REVISION
14	E.C.N.		REVISION
15	E.C.N.		REVISION
16	E.C.N.		REVISION
17	E.C.N.		REVISION
18	E.C.N.		REVISION
19	E.C.N.		REVISION
20	E.C.N.		REVISION
21	E.C.N.		REVISION
22	E.C.N.		REVISION
23	E.C.N.		REVISION
24	E.C.N.		REVISION
25	E.C.N.		REVISION
26	E.C.N.		REVISION
27	E.C.N.		REVISION
28	E.C.N.		REVISION
29	E.C.N.		REVISION
30	E.C.N.		REVISION
31	E.C.N.		REVISION
32	E.C.N.		REVISION
33	E.C.N.		REVISION
34	E.C.N.		REVISION
35	E.C.N.		REVISION
36	E.C.N.		REVISION
37	E.C.N.		REVISION
38	E.C.N.		REVISION
39	E.C.N.		REVISION
40	E.C.N.		REVISION
41	E.C.N.		REVISION
42	E.C.N.		REVISION
43	E.C.N.		REVISION
44	E.C.N.		REVISION
45	E.C.N.		REVISION
46	E.C.N.		REVISION
47	E.C.N.		REVISION
48	E.C.N.		REVISION
49	E.C.N.		REVISION
50	E.C.N.		REVISION
51	E.C.N.		REVISION
52	E.C.N.		REVISION
53	E.C.N.		REVISION
54	E.C.N.		REVISION
55	E.C.N.		REVISION
56	E.C.N.		REVISION
57	E.C.N.		REVISION
58	E.C.N.		REVISION
59	E.C.N.		REVISION
60	E.C.N.		REVISION
61	E.C.N.		REVISION
62	E.C.N.		REVISION
63	E.C.N.		REVISION
64	E.C.N.		REVISION
65	E.C.N.		REVISION
66	E.C.N.		REVISION
67	E.C.N.		REVISION
68	E.C.N.		REVISION
69	E.C.N.		REVISION
70	E.C.N.		REVISION
71	E.C.N.		REVISION
72	E.C.N.		REVISION
73	E.C.N.		REVISION
74	E.C.N.		REVISION
75	E.C.N.		REVISION
76	E.C.N.		REVISION
77	E.C.N.		REVISION
78	E.C.N.		REVISION
79	E.C.N.		REVISION
80	E.C.N.		REVISION
81	E.C.N.		REVISION
82	E.C.N.		REVISION
83	E.C.N.		REVISION
84	E.C.N.		REVISION
85	E.C.N.		REVISION
86	E.C.N.		REVISION
87	E.C.N.		REVISION
88	E.C.N.		REVISION
89	E.C.N.		REVISION
90	E.C.N.		REVISION
91	E.C.N.		REVISION
92	E.C.N.		REVISION
93	E.C.N.		REVISION
94	E.C.N.		REVISION
95	E.C.N.		REVISION
96	E.C.N.		REVISION
97	E.C.N.		REVISION
98	E.C.N.		REVISION
99	E.C.N.		REVISION
100	E.C.N.		REVISION



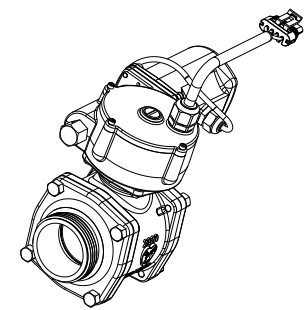
SECTION B-B



SECTION A-A



- 6) BEFORE APPLYING DECAL SURFACE MUST BE CLEANED W/RUBBING ALCOHOL OR OTHER NON RESIDUE CLEANER. ALSO, PREMASK SHOULD NOT BE REMOVED FROM DECAL.
- 5) FILE THREADS FLAT WITH GEAR SEGMENT SURFACE.
- 4) PIN MUST BE IN CENTER OF SHAFT COUPLING.
- 3) APPLY GENERAL PURPOSE PETROLEUM BASE GREASE.
- 2) SECURE THREADS WITH \*LOCTITE\* ADHESIVE #242 (BLUE)



① (#99357101) #91 ELECTRIC ACTUATOR

② VALVE END CAP OPTIONS SEE DRAWING 98259000

02920100	2920-E-VV-WST 2.0" ELECTRIC VALVE WITH NEW CONTROLLER	1
02920110	2920-E-VV-R-BT 2.0" ELECTRIC VALVE WITH OLD CONTROLLER	1

③ REFER TO DRAWINGS 98444000 & 98444010 FOR CONTROLLER & HARNESS OPTIONS

NOT SHOWN	36793X00	HARNESS MOTOR POWER/SENSOR	1
NOT SHOWN	36779X00	HARNESS MODULE TO CONTROLLER	1
NOT SHOWN	81196000	OLD VALVE CONTROLLER	1
NOT SHOWN	81052000	SWITCH/INDICATOR MODULE	1

④ OLD STYLE CONTROLLER OPTION

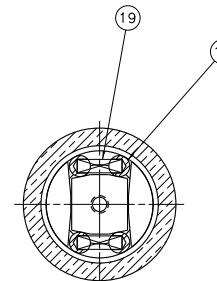
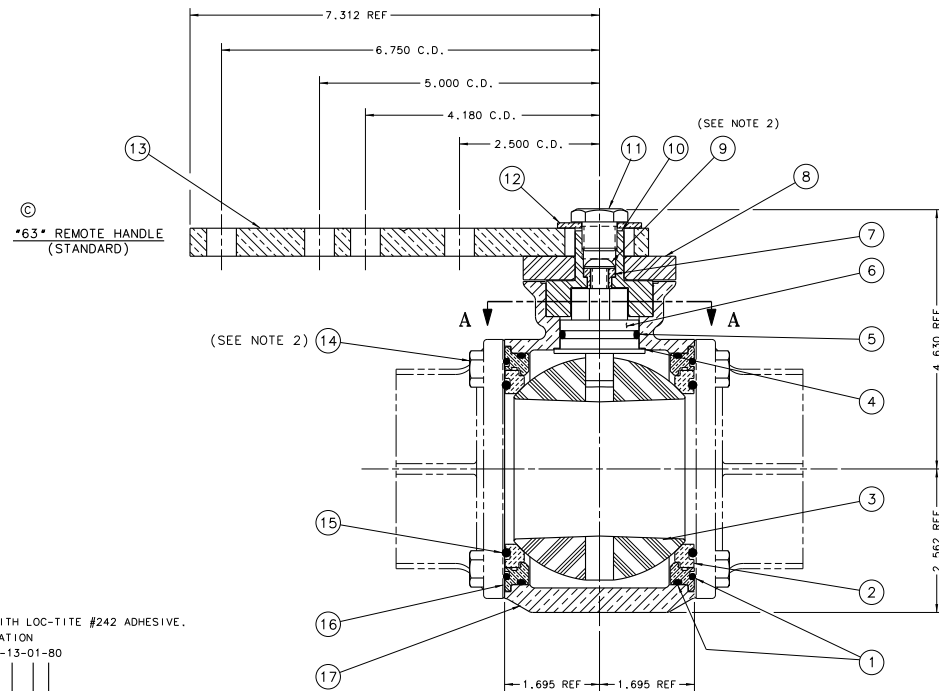
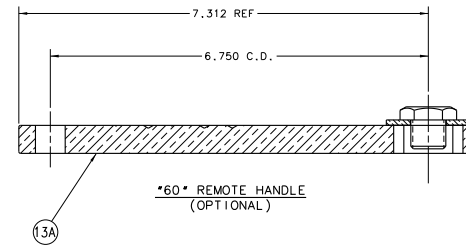
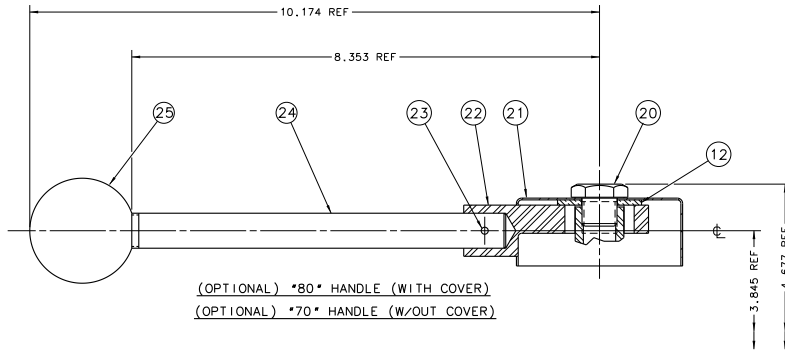
24	81147001	ASSEMBLY GEARMOTOR 12-VDC (19.7:1 GEAR RATIO)	1
----	----------	---	---

⑤ (02920200) 2920-E VALVE W/FAST MOTOR

47	57295000	O-RING (FAS 568-D16)	1
46	57380000	O-RING (FAS 568-008)	1
45	65219000	O-RING (CON POINT)	1
44	64072000	O.250-28 X 0.187-LG. SOC HEX HD	3
43	65114000	O.250-28 X 0.187-LG. SOC HD	3
42	25025000	SREW-PAN MACH #1-40 X 0.375-LG (TYPE #302 SS)	2
41	61046000	DECAL-WARNING	1
40	33784001	SCREW-CAP (#200 SERIES S/S) #10-32 X 0.125-LG. SOC HD	1
39	46051000	MAGNET # 0.31 X 0.67-LG. #8-32 THD	1
38	47652001	GEAR-SEGMENTAL	1
37	51248000	NUT-VALVE (3/4 HEX)	1
36	17702000	PIN-ROLL 7/8-32-125-0625	1
35	71516000	BEARING-THRUST (5/16)	1
34	63601001	WASHER-THRUST (5/16)	2
33		SPACER	1
32	81264000	CIRCUIT BOARD ASSEMBLY	1
31	63935901	SHAFT-WORM	1
30	51071000	PIN-DRVLOC	1
29	20991001	COUPLING - SHAFT	1
28	65201000	SCREW-SET 5/8 (CON POINT) #10-32 X 0.125-LG. SOC HD	1
27	17701000	BEARING-THRUST (1/4)	1
26	71515000	WASHER-THRUST (1/4)	2
25			
24	81119001	ASSEMBLY GEARMOTOR 12-VDC (65.5:1 GEAR RATIO)	1
23	57414000	O-RING (FAS 568-152) 3.237 ID X 0.103 C/S	2
22	58893000	SEAT RETAINER (2.0)	2
21	57490000	RING-O (FAS 568-151) 2.987 ID X 0.103 C/S	2
20	57386000	RING-O (FAS 568-229) #10-32 X 0.138 C/S	2
19	61059000	SCREW-MACH S/S #10-32 X 0.700-LG. HEX HD	8
18	65111000	SCREW-MACH S/S #10-32 X 0.500-LG. HEX HD	4
17	51815000	PLATE-STOP	1
16	23584001	CASE-GEAR (SMALL) N/S	1
15	57490000	RING-O (FAS 568-151) 2.987 ID X 0.103 C/S	1
14	23535001	COVER-GEAR CASE (SMALL)	1
13	36809000	HARNESS-CONTROL	1
12	64083000	SCREW-CAP (STIMLS STL) #8-32 X 0.500-LG. SOC HD	4
11	57321000	O-RING (FAS 568-D14) 0.489 ID X 0.070 C/S	1
10			
9	71514001	WASHER-THRUST	1
8			
7	57474000	O-RING (FAS 568-038) 2.614 ID X 0.070 C/S	1
6	65318001	SHAFT-ACTUATOR (LONG TAPER HARNESS)	1
5	57396000	O-RING (FAS 568-124) 2.219 ID X 0.103 C/S	2
4	71188000	WASHER-TEFLON	1
3	17312000	BALL-VALVE (2.0) ACETAL	1
2	63856000	SEAT-VALVE (2.0) U.H.W.P.E.	2
1	16996001	BODY-VALVE (2.0)	1

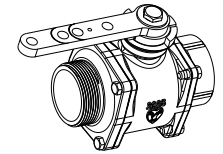
REV	DATE	BY	CHKD	APP'D	DESCRIPTION
1	01/01/00	MS	MS	MS	INITIAL RELEASE
2	01/01/00	MS	MS	MS	INITIAL RELEASE
3	01/01/00	MS	MS	MS	INITIAL RELEASE
4	01/01/00	MS	MS	MS	INITIAL RELEASE
5	01/01/00	MS	MS	MS	INITIAL RELEASE
6	01/01/00	MS	MS	MS	INITIAL RELEASE
7	01/01/00	MS	MS	MS	INITIAL RELEASE
8	01/01/00	MS	MS	MS	INITIAL RELEASE
9	01/01/00	MS	MS	MS	INITIAL RELEASE
10	01/01/00	MS	MS	MS	INITIAL RELEASE
11	01/01/00	MS	MS	MS	INITIAL RELEASE
12	01/01/00	MS	MS	MS	INITIAL RELEASE
13	01/01/00	MS	MS	MS	INITIAL RELEASE
14	01/01/00	MS	MS	MS	INITIAL RELEASE
15	01/01/00	MS	MS	MS	INITIAL RELEASE
16	01/01/00	MS	MS	MS	INITIAL RELEASE
17	01/01/00	MS	MS	MS	INITIAL RELEASE
18	01/01/00	MS	MS	MS	INITIAL RELEASE
19	01/01/00	MS	MS	MS	INITIAL RELEASE
20	01/01/00	MS	MS	MS	INITIAL RELEASE
21	01/01/00	MS	MS	MS	INITIAL RELEASE
22	01/01/00	MS	MS	MS	INITIAL RELEASE
23	01/01/00	MS	MS	MS	INITIAL RELEASE
24	01/01/00	MS	MS	MS	INITIAL RELEASE
25	01/01/00	MS	MS	MS	INITIAL RELEASE
26	01/01/00	MS	MS	MS	INITIAL RELEASE
27	01/01/00	MS	MS	MS	INITIAL RELEASE
28	01/01/00	MS	MS	MS	INITIAL RELEASE
29	01/01/00	MS	MS	MS	INITIAL RELEASE
30	01/01/00	MS	MS	MS	INITIAL RELEASE
31	01/01/00	MS	MS	MS	INITIAL RELEASE
32	01/01/00	MS	MS	MS	INITIAL RELEASE
33	01/01/00	MS	MS	MS	INITIAL RELEASE
34	01/01/00	MS	MS	MS	INITIAL RELEASE
35	01/01/00	MS	MS	MS	INITIAL RELEASE
36	01/01/00	MS	MS	MS	INITIAL RELEASE
37	01/01/00	MS	MS	MS	INITIAL RELEASE
38	01/01/00	MS	MS	MS	INITIAL RELEASE
39	01/01/00	MS	MS	MS	INITIAL RELEASE
40	01/01/00	MS	MS	MS	INITIAL RELEASE
41	01/01/00	MS	MS	MS	INITIAL RELEASE
42	01/01/00	MS	MS	MS	INITIAL RELEASE
43	01/01/00	MS	MS	MS	INITIAL RELEASE
44	01/01/00	MS	MS	MS	INITIAL RELEASE
45	01/01/00	MS	MS	MS	INITIAL RELEASE
46	01/01/00	MS	MS	MS	INITIAL RELEASE
47	01/01/00	MS	MS	MS	INITIAL RELEASE

NO.	PART NO.	PART NAME	REQ.
ELKHART BRASS MFG. CO., INC.			
ELKHART, INDIANA			
VALVE - FIRE APPARATUS WITH 2.0 BALL			
REV.	DATE	BY	APP'D
1	01/01/00	MS	MS
2	01/01/00	MS	MS
3	01/01/00	MS	MS
4	01/01/00	MS	MS
5	01/01/00	MS	MS
6	01/01/00	MS	MS
7	01/01/00	MS	MS
8	01/01/00	MS	MS
9	01/01/00	MS	MS
10	01/01/00	MS	MS
11	01/01/00	MS	MS
12	01/01/00	MS	MS
13	01/01/00	MS	MS
14	01/01/00	MS	MS
15	01/01/00	MS	MS
16	01/01/00	MS	MS
17	01/01/00	MS	MS
18	01/01/00	MS	MS
19	01/01/00	MS	MS
20	01/01/00	MS	MS
21	01/01/00	MS	MS
22	01/01/00	MS	MS
23	01/01/00	MS	MS
24	01/01/00	MS	MS
25	01/01/00	MS	MS
26	01/01/00	MS	MS
27	01/01/00	MS	MS
28	01/01/00	MS	MS
29	01/01/00	MS	MS
30	01/01/00	MS	MS
31	01/01/00	MS	MS
32	01/01/00	MS	MS
33	01/01/00	MS	MS
34	01/01/00	MS	MS
35	01/01/00	MS	MS
36	01/01/00	MS	MS
37	01/01/00	MS	MS
38	01/01/00	MS	MS
39	01/01/00	MS	MS
40	01/01/00	MS	MS
41	01/01/00	MS	MS
42	01/01/00	MS	MS
43	01/01/00	MS	MS
44	01/01/00	MS	MS
45	01/01/00	MS	MS
46	01/01/00	MS	MS
47	01/01/00	MS	MS



VALVE HANDLE OPTIONS  
SEE DRAWING 98458000

VALVE END CAP OPTIONS  
SEE DRAWING 98260000 (SHEET 1)  
SEE DRAWING 98260100 (SHEET 2)  
SEE DRAWING 98260200 (SHEET 3)



25	42023000	KNOB-HANDLE	1
24	61528001	ROD-HANDLE	1
23	51246000	PIN-ROD 5.125 DIA X 0.875 LG X 0.028 THK	1
22	36318000	HANDLE-VALVE *70-80*	1
21	23515004	COVER-HANDLE	1
20	16418005	BOLT-HANDLE (BRASS)	1
12	71156001	WASHER-FLAT (BRASS)	1
		(OPTIONAL) *80* HANDLE (WITH COVER) PHANTOM #99315004	

25	42023000	KNOB-HANDLE	1
24	61528001	ROD-HANDLE	1
23	51246000	PIN-ROD 5.125 DIA X 0.875 LG X 0.028 THK	1
22	36318000	HANDLE-VALVE *70-80*	1
12	71156001	WASHER-FLAT (BRASS)	1
11	16418001	BOLT-HANDLE	1
		(OPTIONAL) *70* HANDLE (W/OUT COVER) PHANTOM #99315001	

13A	36160000	HANDLE-REMOTE *60*	1
12	71156001	WASHER-FLAT (BRASS)	1
11	16418001	BOLT-HANDLE (BRASS)	1
		(STANDARD) REMOTE *60* HANDLE PHANTOM #99316001	

13	36169001	HANDLE-REMOTE *63*	1
12	71156001	WASHER-FLAT (BRASS)	1
11	16418001	BOLT-HANDLE (BRASS)	1
		(STANDARD) REMOTE *63* HANDLE PHANTOM #99317001	

19	62126000	SPRING-COIL	2
18	51119001	LOCK PIN	4
17	16968001	BODY-VALVE (2.5)	1
16	58894001	RETAINER SEAT (2.5)	2
15	57379000	RING-O (AS 568-233) 2.809 ID X 0.130 C/S	2
14	61173000	BOLT-HEX HD (5/8) 0.375-16 X 0.875 LG	8
10	63765000	SHAFT-ACTUATOR (UPPER)	1
9	64062000	SCREW-CAP (50C BUTTON HD) 0.312-18 X 0.750 LG	1
8	51815000	PLATE-STOP	1
7	63596001	SPACER	1
6	63763001	SHAFT-ACTUATOR (LOWER)	1
5	57396000	RING-O (AS 568-124) 1.237 ID X 0.103 C/S	1
4	71188000	WASHER-TEFLON	1
3	17313000	BALL-VALVE (2.5) ACETAL	1
2	63857000	SEAL-VALVE (2.5) U.H.W.P.E.	2
1	57436000	RING-O (AS 568-154) 3.737 ID X 0.103 C/S	4

2) SECURE THD'S WITH LOC-TITE #242 ADHESIVE.  
1) CATALOG INFORMATION  
EXAMPLE: 2925-13-01-80

HANDLE ASSEMBLY  
OUTLET ADAPTER  
INLET ADAPTER  
CATALOG NO.

NOTES:

D	OPTIONS NOTE ADDED	CDW	07/11
C	REMOVED HANDLE TERMINAL FROM PHANTOM #99317001	CDW	07/11
B	REVISED P/N 63857000	TAB	07/11
A	P/N 63845000 REPLACES 61418000	TAB	07/08
	RELEASED TO PROD.	KLP	07/08
REV.	MS	BY	E.C.N.
E	P/N 61153000 MS P/N 16370000	PAE	09/11
REV.	MS	BY	E.C.N.

MATERIAL:  
1 PLATE DEC. = 1.000  
2 PLATE DEC. = 1.000  
ANGLE = 1.0000"

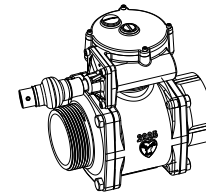
NO. PART NO. PART NAME REQ.  
ELKHART BRASS MFG. CO., INC.  
ELKHART, IND. IN.  
VALVE - FIRE APPARATUS WITH (2.5) BALL  
SCALE FULL DATE 6/8/1989  
CAT. NO. 2925 ORG. SITE D

STANDARD DIMENSIONS  
1 PLATE DEC. = 1.000  
2 PLATE DEC. = 1.000  
ANGLE = 1.0000"

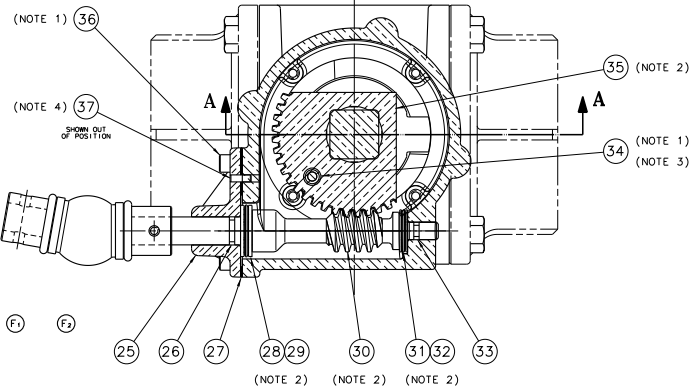
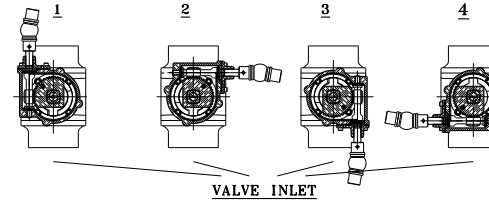
CADAM

PHANTOM (02925000 & 02925001) #2925 REV-E

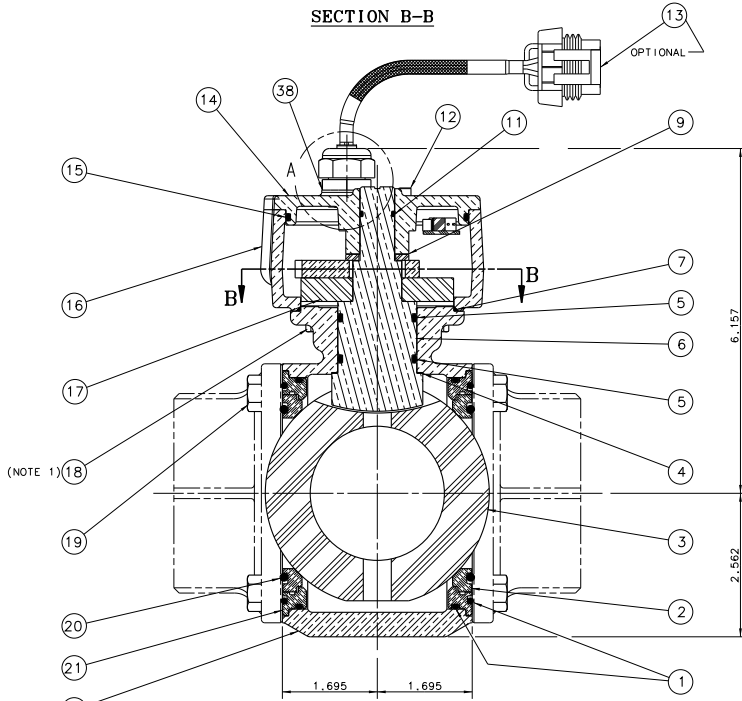
ITEM NO.	ITEM DESCRIPTION
02925200	2925-XX-XX-90 VALVE
(E) 02925210	2925-XX-XX-92 VALVE WITH POSITION INDICATOR LIGHT



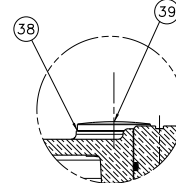
GEARCASE POSITION  
(VALVE SHOWN CLOSED) STANDARD



SECTION B-B

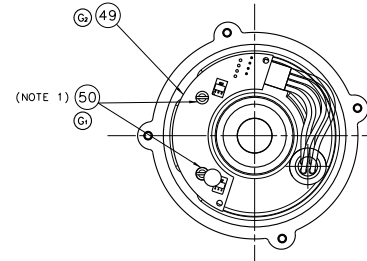


SECTION A-A



DETAIL A  
SCALE: 1 1/2 X SIZE

VALVE END CAP OPTIONS  
SEE DRAWING 98260000 (SHEET 1)  
SEE DRAWING 98260100 (SHEET 2)  
SEE DRAWING 98260200 (SHEET 3)



BOTTOM VIEW OF GEAR CASE COVER

ITEM NO.	ITEM DESCRIPTION	QTY
(CA) NOT SHOWN 51497000	BEZEL - CHROME POS. IND.	1
NOT SHOWN 36783000	HARNES - INTERMEDIATE	1
NOT SHOWN 36781000	HARNES POWER	1
NOT SHOWN 16805000	BAG-ZIP 9.5" X 13"	1
NOT SHOWN 81383001	VALVE POSITION INDICATOR	1
(C) 38 57295000	O-RING (AS 568-016)	1
49 81264000	CIRCUIT BOARD ASSEMBLY	1
50 65114000	SCREW-MACH. (TYPE 303 SS)	2
34 46051000	MAGNET #0.31 X 0.67 LG #8-32 THD	1
13 36809000	HARNES-CONTROL	1

SHOWN ON DRAWING 98303000

(E) (#81462001) POSITION INDICATOR LIGHTS  
OPTIONAL

(C) (#81031001) REMOTE OPERATOR  
6.0" HANDLE  
(SHOWN ON DRAWING 98303000)

(H) 39 23495000	CAP-PLUG	1
38 57295000	O-RING (AS 568-016)	1
(B) 37 51122000	PIN - 50L10	2
(H) 36 64074000	O-RING (AS 568-008) #10-32 X 0.500 LG (TYPE #300 SS)	4
35 33784001	GEAR-SEGMENTAL	1
33 57380000	O-RING (AS 568-008) #176-10 X 0.070 W	1
32 17702000	BEARING-THRUST (5/16)	1
31 71516000	WASHER-THRUST (5/16)	2
30 63941001	SHAFT - WORM S/S	1
29 15698000	BEARING-THRUST (1/2)	1
28 71511000	WASHER-THRUST (1/2)	2
(A) 27 33804000	GASKET-MOTOR MOUNTING ADAPTER	1
26 57298000	O-RING (AS 568-012) 0.384 ID X 0.070 W	1
(F) 25 10455001	ADAPTER - FLANGED	1
24		
23		
(C) 22 16995001	BODY-VALVE (2.5)	1
21 58894001	RETAINER SEAT (2.5)	2
20 57379000	O-RING (AS 568-233) 2.859 ID X 0.152 C/S	2
19 61173000	BOLT-HEX SS #10-24 X 0.875	8
18 65111000	SCREW-MACH. SS #10-24 X 0.500 LG HK HK HD	4
17 51815000	PLATE-STOP	1
(B) 16 23584001	CASE-GEAR (SMALL)	1
(B) 15 57490000	O-RING (AS 568-151) 2.387 ID X 0.103 W	2
(B) 14 23535001	COVER-GEAR CASE (SMALL)	1
(B) 12 64083000	SCREW-CAP (STINLS STL) #8-32 X 0.500-LG. SDC HD	4
(B) 11 57321000	O-RING (AS 568-014) 0.489 ID X 0.070 C/S	1
(C) 10		
(C) 9 71514001	WASHER-THRUST	1
8		
(C) 7 57474000	O-RING (AS 568-038) 2.814 ID X 0.070 C/S	1
(C) 6 65318001	SHAFT-ACTUATOR (ONE PIECE) BRASS	1
(C) 5 57396000	O-RING (AS 568-124) 2.237 ID X 0.103 C/S	2
(C) 4 71188000	WASHER-TEFLON	1
3 17313000	BALL-VALVE (2.5) ACETAL	1
2 63857000	SEAT-VALVE (2.5) V.W.M.P.E.	2
1 57436000	O-RING (AS 568-154) 3.737 ID X 0.103 C/S	4

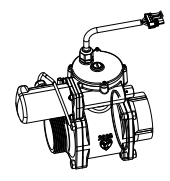
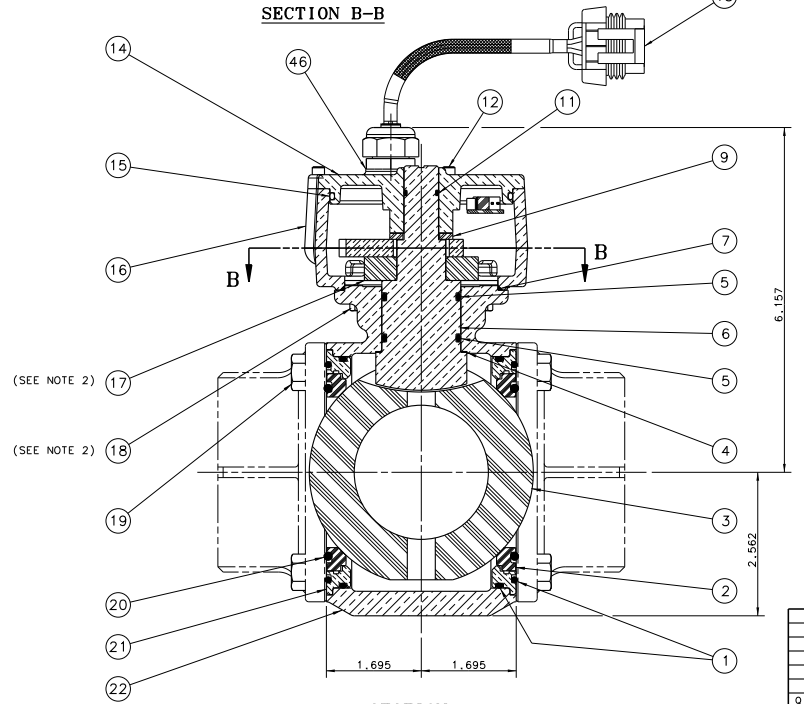
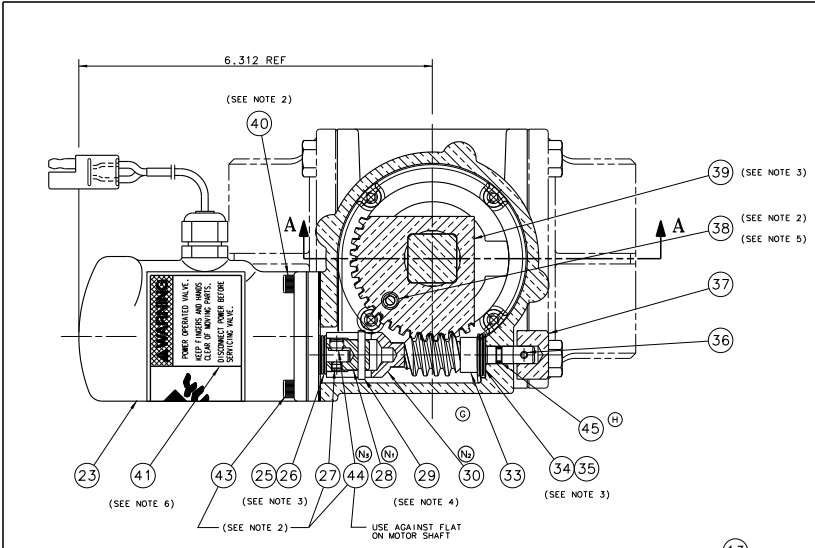
NO.	PART NO.	PART NAME	REQ.
		ELKHART BRASS MFG. CO., INC.	
		ELKHART, IND. 46404	
VALVE - (2.5) FIRE APPARATUS (GEAR ACTUATOR)			
APP'D BY	S. STUMP	SCALE	FULL
DATE	OCT. 30, 1995	CAT. NO.	
2925-G		REV.	D
<small>STANDARD DIMENSIONS IF PLACE DEC. = 1.000 IF PLACE DEC. = 0.500 IF PLACE DEC. = 0.100 IF PLACE DEC. = 0.050 IF PLACE DEC. = 0.025</small>			

REV.	DESCRIPTION	DATE	BY	CHK'D	APP'D
001	INITIAL				
002	REVISED DIMENSIONS				
003	REVISED DIMENSIONS				
004	REVISED DIMENSIONS				
005	REVISED DIMENSIONS				
006	REVISED DIMENSIONS				
007	REVISED DIMENSIONS				
008	REVISED DIMENSIONS				
009	REVISED DIMENSIONS				
010	REVISED DIMENSIONS				
011	REVISED DIMENSIONS				
012	REVISED DIMENSIONS				
013	REVISED DIMENSIONS				
014	REVISED DIMENSIONS				
015	REVISED DIMENSIONS				
016	REVISED DIMENSIONS				
017	REVISED DIMENSIONS				
018	REVISED DIMENSIONS				
019	REVISED DIMENSIONS				
020	REVISED DIMENSIONS				
021	REVISED DIMENSIONS				
022	REVISED DIMENSIONS				
023	REVISED DIMENSIONS				
024	REVISED DIMENSIONS				
025	REVISED DIMENSIONS				
026	REVISED DIMENSIONS				
027	REVISED DIMENSIONS				
028	REVISED DIMENSIONS				
029	REVISED DIMENSIONS				
030	REVISED DIMENSIONS				
031	REVISED DIMENSIONS				
032	REVISED DIMENSIONS				
033	REVISED DIMENSIONS				
034	REVISED DIMENSIONS				
035	REVISED DIMENSIONS				
036	REVISED DIMENSIONS				
037	REVISED DIMENSIONS				
038	REVISED DIMENSIONS				
039	REVISED DIMENSIONS				
040	REVISED DIMENSIONS				
041	REVISED DIMENSIONS				
042	REVISED DIMENSIONS				
043	REVISED DIMENSIONS				
044	REVISED DIMENSIONS				
045	REVISED DIMENSIONS				
046	REVISED DIMENSIONS				
047	REVISED DIMENSIONS				
048	REVISED DIMENSIONS				
049	REVISED DIMENSIONS				
050	REVISED DIMENSIONS				
051	REVISED DIMENSIONS				
052	REVISED DIMENSIONS				
053	REVISED DIMENSIONS				
054	REVISED DIMENSIONS				
055	REVISED DIMENSIONS				
056	REVISED DIMENSIONS				
057	REVISED DIMENSIONS				
058	REVISED DIMENSIONS				
059	REVISED DIMENSIONS				
060	REVISED DIMENSIONS				

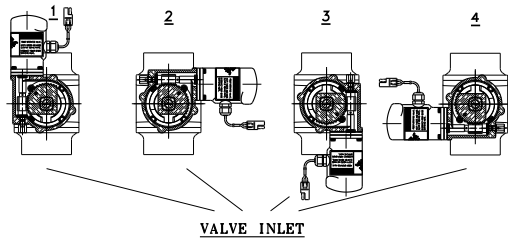
Table with 4 columns: Part Number, Description, Revision, and Quantity. Includes items 02925100, 02925110, 36793X00, 36779X00, 81196000, 81052000.

Table with 4 columns: Part Number, Description, Revision, and Quantity. Includes items 36793X00, 36779X00, 81196000, 81052000. Includes 'OLD STYLE CONTROLLER OPTION' note.

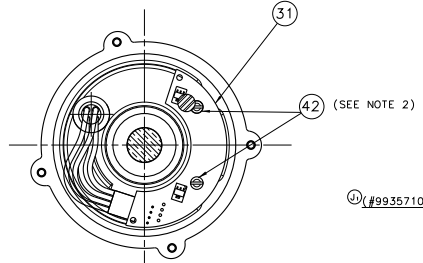
REFER TO DRAWINGS 98444000 & 98444010 FOR CONTROLLER & HARNESS OPTIONS



GEARCASE POSITION (VALVE SHOWN CLOSED)



VALVE INLET



COVER DETAIL

- Notes regarding decal application (C), cleaning (P), file threads (5), pin alignment (4), grease application (3), and thread locking (2).

VALVE END CAP OPTIONS SEE DRAWING 98260000 (SHEET 1) SEE DRAWING 98260100 (SHEET 2) SEE DRAWING 98260200 (SHEET 3)

Revision table with columns: Rev., Description, Date, and Initials. Shows revisions 1 through 11.

Assembly table with columns: No., Part No., Part Name, Qty., and Remarks. Lists various components like O-rings, gears, and washers.

ELKHART BRASS MFG. CO., INC. ELKHART, IND. USA

VALVE - FIRE APPARATUS WITH 2.5 BALL

2925-E

CADAM