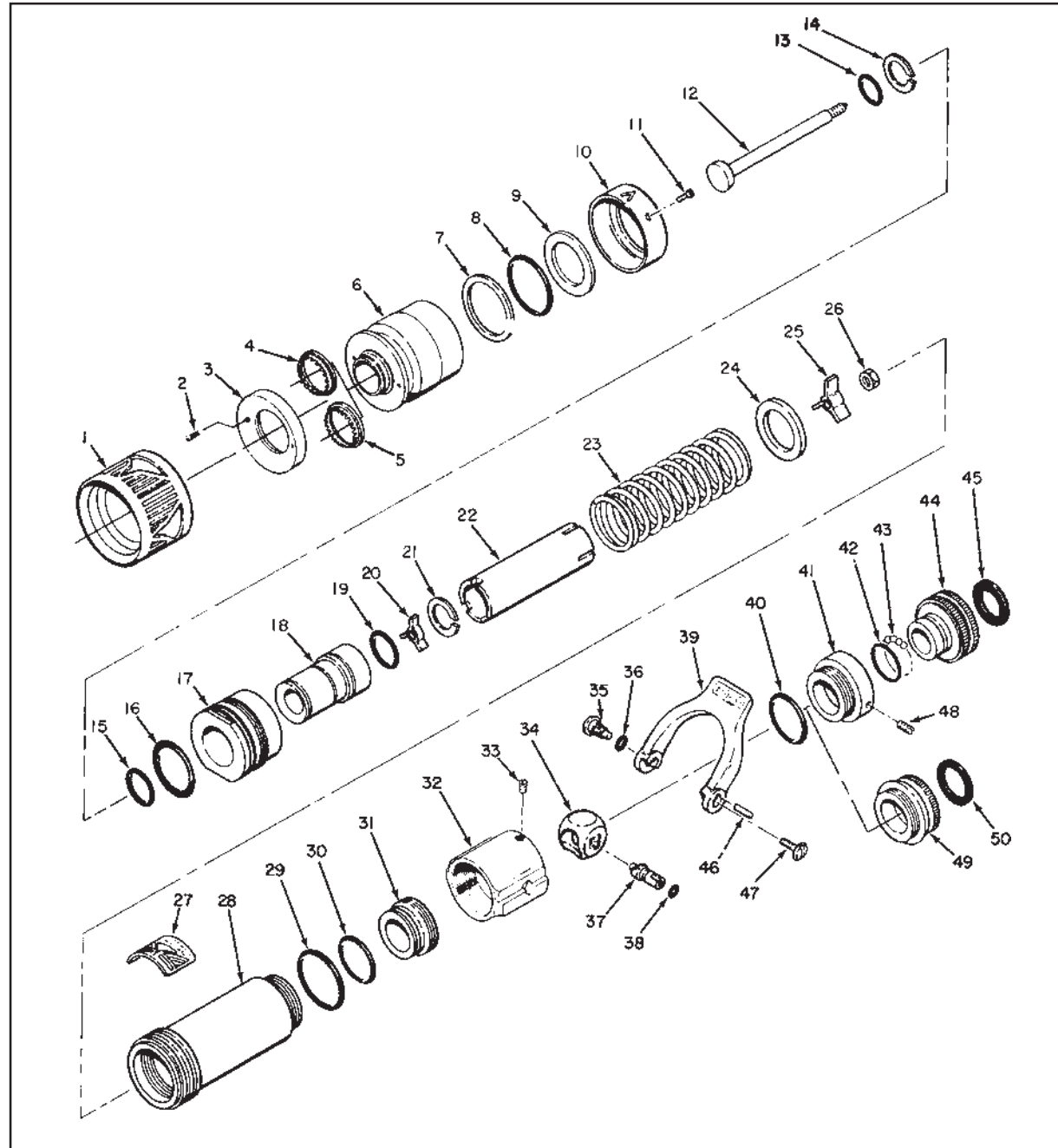


SM-3F (Old Style - Pre '95)

April, 1996

INDEX NO.	PART NO.	QTY. REQ.	DESCRIPTION
1	33636	1	Rubber Bumper
2	63780	2	Cap Screw
3	57612	1	Retainer Ring
4	58872	1	Teeth Ring (Spinning)
5	58873	1	Teeth Ring (Rigid)
6	66312	1	Nozzle Tip
7	57661	1	Split Ring
8	57381	1	"O" Ring
9	71114	2	Reinforcing Washer
10	61670	1	Indicator Sleeve
11	61145	1	Machine Screw
12	62043	1	Stem
13	57329	1	"O" Ring
14	57684	1	Truarc Ring
15	57327	1	"O" Ring
16	57420	1	"O" Ring
17	16880	1	Nozzle Body Tip
18	16903	1	Center Barrel
19	57337	1	"O" Ring
20	33716	1	Stem Guide
21	57688	1	Truarc Ring
22	61637	1	Sleeve
23	61781	1	Coil Spring S/S
24	71113	1	Reinforcing Washer
25	61828	1	Stem Base
26	47479	1	Jam Nut
27	52137	1	Indicator Plate
28	16886	1	Nozzle Body
29	57334	1	"O" Ring for Body
30	57327	1	"O" Ring for Seat
31	61357	1	Adjustable Seat
32	16965†	1	Shutoff Body (Double Stop)
32	16793†	1	Shutoff Body (Single Stop)
33	61269	1	Set Screw
34	15076	1	Valve Ball
35	63701	1	Handle Pivot Screw
36	57348	1	"O" Ring for Handle Screw
37	61475	1	Actuator Shaft
38	57298†	1	"O" Ring for Act. Shaft
39	36276†	1	Tab Handle (Double Stop)
39	36273	1	Tab Handle (Single Stop)
40	57309	1	"O" Ring for Base Adapter
41	11607*	1	F/S Base Adapter
42	57336*	1	"O" Ring
43	15003*	23	.187 Diam. Delrin Ball
44	16760*	1	1" Free Swivel
45	33091*	1	Rubber Gasket
46	51068	1	Drive Pin
47	61282	1	Actuator Shaft Screw
48	63675*	1	F/S Set Screw
49	15429**	1	1" Rigid Base
50	33091**	1	Rubber Gasket
	44245	1	Caution Label



* Standard Free Swivel Base Parts

** Optional Rigid Base Parts

† Some models were furnished with a single stop on the left side of shutoff body rather than the double stop as shown.

NOTE: For Pistol Grip Base parts refer to separate sheet.

CAUTION: Do Not Attempt To Disassemble Spring Cell (Parts#17 Through #28) Without Special Fixture

SM-10F (Old Style - Pre '95)

April, 1996

INDEX NO.	PART NO.	QTY. REQ.	DESCRIPTION
1	33642	1	Rubber Bumper
2	63780	3	Cap Screw
3	57618	1	Retainer Ring (3 holes)
4	58870	1	Teeth Ring (Spinning)
5	58871	1	Teeth Ring (Rigid)
6	66327	1	Nozzle Tip
7	57661	1	Split Ring
8	57381	1	"O" Ring
9	71114	1	Reinforcing Washer
10	61670	1	Indicator Sleeve
11	61145	2	Machine Screw
12	80579	1	Stem Sub-Assembly
13	57398	1	"O" Ring
14	58931	1	Truarc Ring
15	57398	1	"O" Ring
16	57420	1	"O" Ring
17	16887	1	Nozzle Body Tip
18	16913	1	Center Barrel
19	63579	1	Spacer
20	61637	1	Sleeve
21	61775	1	Coil Spring S/S
22	71113	1	Reinforcing Washer
23	63392	1	Stem Base
24	47543	1	Stem Nut
25	52135	1	Indicator Plate
26	16887	1	Nozzle Body
27	57334	1	"O" Ring for Body
28	57327	1	"O" Ring for Seat
29	61357	1	Adjustable Seat
30	16941†	1	Shutoff Body (Double Stop)
30	16793†	1	Shutoff Body (Single Stop)
31	15076	1	Valve Ball
32	61269	1	Set Screw
33	63701	1	Handle Pivot Screw
34	57348	1	"O" Ring for Handle Screw
35	61475	1	Actuator Shaft
36	57298	1	"O" Ring for Act. Shaft
37	36083†	1	Horseshoe Handle (Double Stop)
37	36080†	1	Horseshoe Handle (Single Stop)
38	51068	1	Drive Pin
39	61282	1	Actuator Shaft Screw
40	57309	1	"O" Ring for Base Adapter
41	15428*	1	1.5" Rigid Base
42	33074**	1	Rubber Gasket
43	11606**	1	B/G Base Adapter
44	15003**	32	.187 Diameter Delrin Ball
45	63068**	1	1.5" R.L. Swivel
46	63674**	1	Swivel Set Screw
47	63675††	1	F/S Set Screw
48	11607††	1	F/S Base Adapter
49	57336††	1	"O" Ring
50	15003††	23	.187 Diameter Delrin Ball
51	16762††	1	1.5" R.L. Free Swivel
44245		1	Caution Label

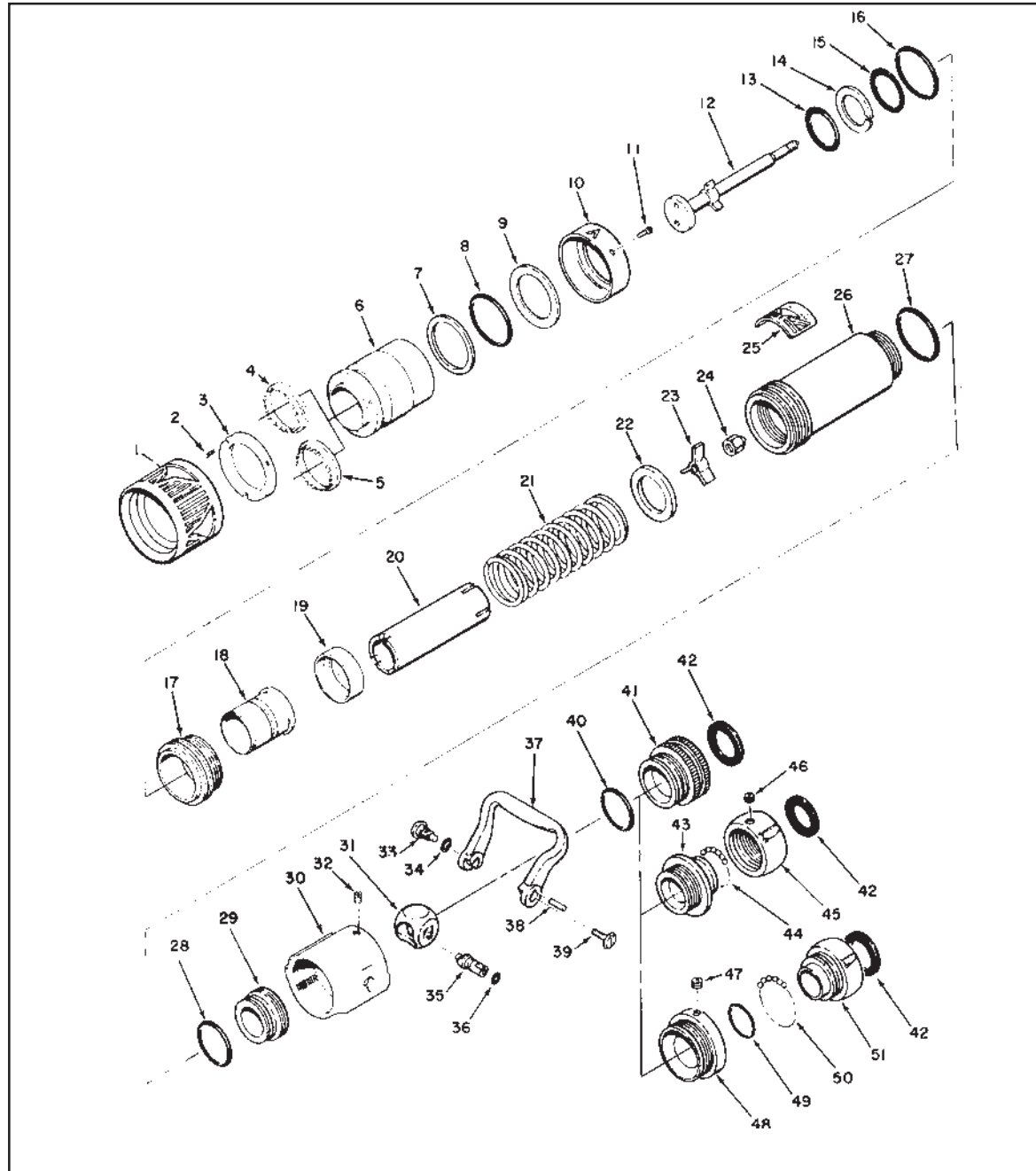
* Optional Rigid Base Parts

** Standard Swivel Base Parts

† Some models were furnished with a single stop on the left side of shutoff body rather than the double stop as shown.

†† Optional free Swivel Base Parts.

NOTE: For Pistol Grip Base parts refer to separate sheet.

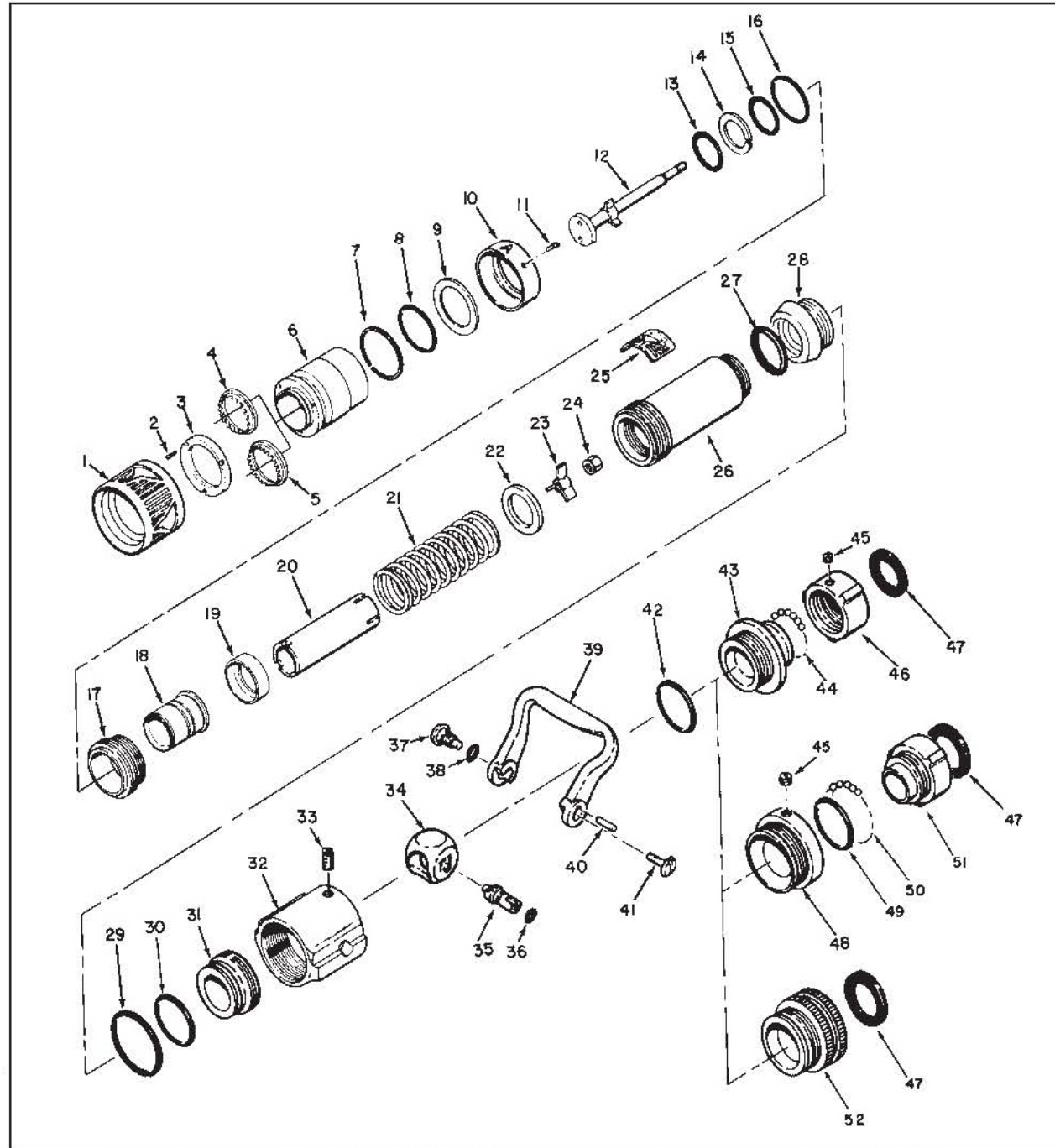


CAUTION: Do Not Attempt to Disassemble Spring Cell (Parts #17 Through #28) Without Special Fixture!

SM-20F - (Old Style - Pre '95)

May, 2012

INDEX NO.	PART NO.	QTY. REQ.	DESCRIPTION
1	33642	1	Rubber Bumper
2	63780	3	Cap Screw
3	57618	1	Retainer Ring
4	58870	1	Teeth Ring (Spinning)
5	58871	1	Teeth Ring (Rigid)
6	66327	1	Nozzle Tip
7	57661	1	Split Ring
8	17381	1	"O" Ring
9	71114	1	Reinforcing Washer
10	61670	1	Indicator Sleeve
11	61145	2	Machine Screw
12	80657	1	Nozzle Stem
13	57398	1	"O" Ring
14	58931	1	Truarc Ring
15	57398	1	"O" Ring
16	57420	1	"O" Ring
17	16887	1	Nozzle Body Tip
18	16913	1	Center Barrel
19	63579	1	Spacer
20	61637	1	Sleeve
21	61780	1	Coil Spring S/S
22	71113	1	Reinforcing Washer
23	63392	1	Stem Base (Web)
24	47543	1	Stem Nut
25	52146	1	Indicator Plate
26	16886	1	Nozzle Body Tip
27	57334	1	"O" Ring
28	11543	1	Body Adapter
29	57387	1	"O" Ring
30	57330	1	"O" Ring for Adj. Seat.
31	61358	1	Adjustable Seat
32	16966	1	Shutoff Body (Double Stop)
33	61269	1	Set Screw
34	17304	1	Valve Ball
35	61475	1	Actuator Shaft
36	57298	1	"O" Ring for Act. Shaft.
37	63708	1	Handle Pivot Screw
38	57348	1	"O" Ring for Pivot Screw
39	36086*	1	Horseshoe Handle
40	51068	1	Drive Pin
41	61286	1	Act. Shaft Screw
42	57310	1	"O" Ring for Base Adapter
43	10022**	1	B/G Base Adapter
44	15003**	32	.187 Dia. Delrin Ball
45	63674**	1	Set Screw
46	63068**	1	1.5" R.L. Swivel
47	33074**	1	Swivel Gasket
48	11611***	1	F/S Base Adapter
49	57309***	1	"O" Ring
50	15003***	32	.187 Dia Delrin Ball
51	16765***	1	1.5" R.L. Free Swivel
52	63674***	1	Set Screw
	15432†	1	Rigid Base
	44245	1	Caution Label



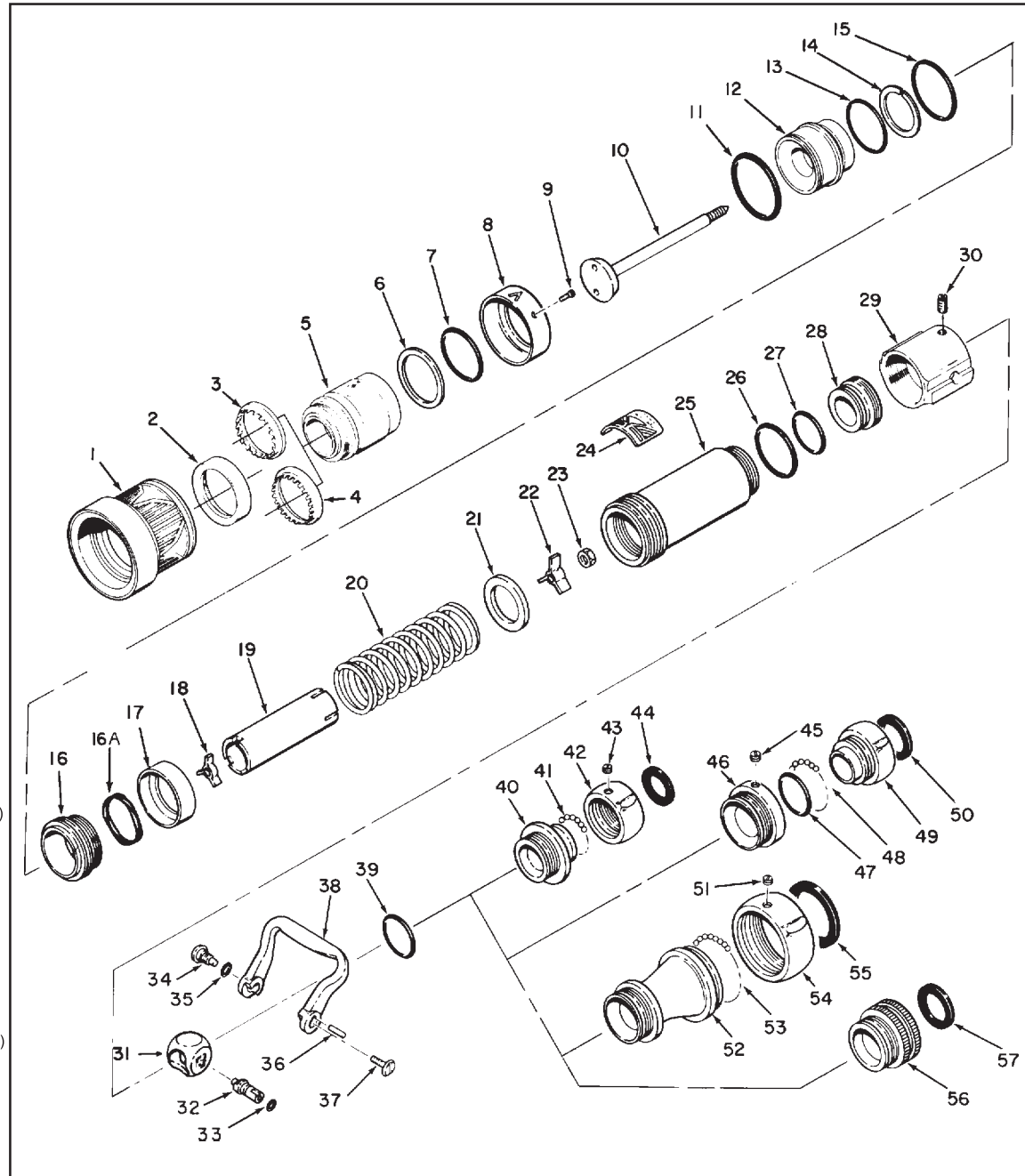
CAUTION: Do Not Attempt To Disassemble Spring Cell (Parts #17 Through #26) Without Special Fixture!

- * Must use N/S Actuator Shaft (63755) with this handle.
- ** Standard Swivel Base.
- *** Optional Free- Swivel Base.
- † Optional Rigid Base.

SM-30F & DSM-30F - (Old Style - Pre '95)

April, 1996

INDEX NO.	PART NO.	QTY. REQ.	DESCRIPTION
1	33655	1	Rubber Bumper
2	57614	1	Retainer Ring
3	58875	1	Teeth Ring (Spinning)
4	58874	1	Teeth Ring (Rigid)
5	66361	1	Nozzle Tip
6	71117	1	Reinforcing Ring
7	57375	1	"O" Ring
8	61672	1	Indicator Sleeve
9	61145	2	Machine Screw
10	62094	1	Stem
11	57383	1	"O" Ring
12	17475	1	Center Barrel
13	57429	1	"O" Ring
14	57689	1	Truarc Ring
15	57383	1	"O" Ring
16	17128	1	Nozzle Body Tip
16A	71126	1	Wave Spring
17	63578	1	Spacer
18	33712	1	Stem Guide
19	63891	1	Sleeve
20	61785	1	Coil Spring S/S
21	71115	1	Reinforcing Washer
22	63380	1	Stem Base
23	47543	1	Jam Nut
24	44297	1	Indicator Plate (DSM-30F)
24	44294	1	Indicator Plate (SM-30F)
25	17127	1	Nozzle Body
26	57387	1	"O" Ring for Body
27	57330	1	"O" Ring for Seat
28	61358	1	Adjustable Seat
29	16966	1	Shutoff Body
30	61269	1	Set Screw
31	17304	1	Valve Ball
32	63755	1	Actuator Shaft
33	57298	1	"O" Ring for Actuator Shaft
34	63708	1	Handle Pivot Screw
35	57348	1	"O" Ring for Handle Screw
36	51068	1	Drive Pin
37	61286	1	Actuator Shaft Screw
38	36086	1	Horseshoe Handle
39	57310	1	"O" Ring for Base Adapter
40	10022*	1	B/G Base Adapter (Standard)
41	15018	32	.187 Diameter S/S Ball (Standard)
42	63068*	1	1 1/2" R.L. Swivel (Standard)
43	63674*	1	Swivel Set Screw (Standard)
44	33074*	1	Swivel Gasket (Standard)
45	63674**	1	F/S Set Screw (Optional)
46	11611**	1	F/S Base Adapter (Optional)
47	57309**	1	"O" Ring for F/S Base
48	15018**	32	.187 Diameter S/S Ball (Optional)
49	16765**	1	1 1/2" R.L. Free Swivel (Optional)
50	33074**	1	Swivel Gasket (Optional)
51	63674†	1	Swivel Set Screw (DSM-30F)
52	15623†	1	Base Adapter (DSM-30F)
53	15018†	52	.187 Diameter S/S Ball (DSM-30F)
54	63069†	1	2 1/2" R.L. Swivel (DSM-30F)
55	33083†	1	Swivel Gasket (DSM-30F)
56	15432††	1	1 1/2" Rigid Base (Optional)
57	33074††	1	Base Gasket (Optional)



* Standard Swivel Base Parts for SM-30F.

** Optional Free Swivel Base Parts for SM-30F.

† Standard Swivel Base Parts for DSM-30F.

†† Optional Rigid Base Parts for SM-30F.

CAUTION: Do Not Attempt To Disassemble Spring Cell (Parts 16 Through 25) Without Special Fixture!