

MANUAL ELEVATED 299-11EL

ITEM #	PART #	QTY	DESCRIPTION
1	42022000	1	KNOB FOR F HANDLE
2	65362001	1	LOCK HANDLE SHAFT
3	58943000	1	RETAINER RING S/S
4	65453001	1	SHAFT
5	36637001	1	LOCK HUB
6	52566000	1	LOCK PLATE
7	17851001	1	PIVOT BOLT
8	81311000	1	CONTROL ARM WELDMENT - 299-11 EL (10,15,20)
8	81245000	1	CONTROL ARM WELDMENT - 299-11 EL (25,30,40)
9	61059000	5	SCREW - MACHINE
10	47482000	1	CASTLE NUT
11	52049000	1	COTTER PIN
12	17834000	1	BRACKET - 299-11 EL (10,15,20)
12	16555001	1	BRACKET - 299-11 EL (25,30,40)
13	47466001	5	HEX NUT
14	80717000	1	HORIZONTAL HANDWHELL LOCK ASSEMBLY
15	80701000	1	MONITOR ASSEMBLY
16	33629000	1	HAND GRIP
17	51269000	2	ROLL PIN
18	16380000	2	HEX BOLT
19	80714001	2	CONTROL CABLE ASSEMBLY (10')
19	80715001	2	CONTROL CABLE ASSEMBLY (15')
19	80716001	2	CONTROL CABLE ASSEMBLY (20')
19	80708001	2	CONTROL CABLE ASSEMBLY (25')
19	80709001	2	CONTROL CABLE ASSEMBLY (30')
19	80710001	2	CONTROL CABLE ASSEMBLY (40')
20	80711000	1	HORIZONTAL DRIVE SLEEVE (10')
20	80712000	1	HORIZONTAL DRIVE SLEEVE (15')
20	80713000	1	HORIZONTAL DRIVE SLEEVE (20')
20	80699000	1	HORIZONTAL DRIVE SLEEVE (25')
20	80704000	1	HORIZONTAL DRIVE SLEEVE (30')
20	80705000	1	HORIZONTAL DRIVE SLEEVE (40')
21	80682001	1	WATERWAY WELDMENT (10') 4"-150# RF
21	81541001	1	WATERWAY WELDMENT (10') 6"-150# RF
21	80683001	1	WATERWAY WELDMENT (15') 4"-150# RF
21	81542001	1	WATERWAY WELDMENT (15') 6"-150# RF
21	80684001	1	WATERWAY WELDMENT (20') 4"-150# RF
21	81543001	1	WATERWAY WELDMENT (20') 6"-150# RF
21	81540001	1	WATERWAY WELDMENT (20') 6"-300# FF
21	80685001	1	WATERWAY WELDMENT (25') 6"-150# RF
21	80686001	1	WATERWAY WELDMENT (30') 6"-150# RF
21	81610001	1	WATERWAY WELDMENT (30') 6"-300# FF
21	81611001	1	WATERWAY WELDMENT (30') 6"-300# RF
21	80687001	1	WATERWAY WELDMENT (40') 6"-150# RF
21	81537001	1	WATERWAY WELDMENT (40') 6"-300# FF



ELKHART BRASS MFG. CO., INC.
ELKHART, INDIANA

THIS DRAWING CONTAINS INFORMATION THAT IS
PROPRIETARY TO ELKHART BRASS MFG. CO., INC.
AND MAY NOT BE USED TO PRODUCE ANY PARTS,
ASSEMBLIES OR PRODUCTS DESCRIBED HEREIN
WITHOUT EXPRESS WRITTEN PERMISSION.

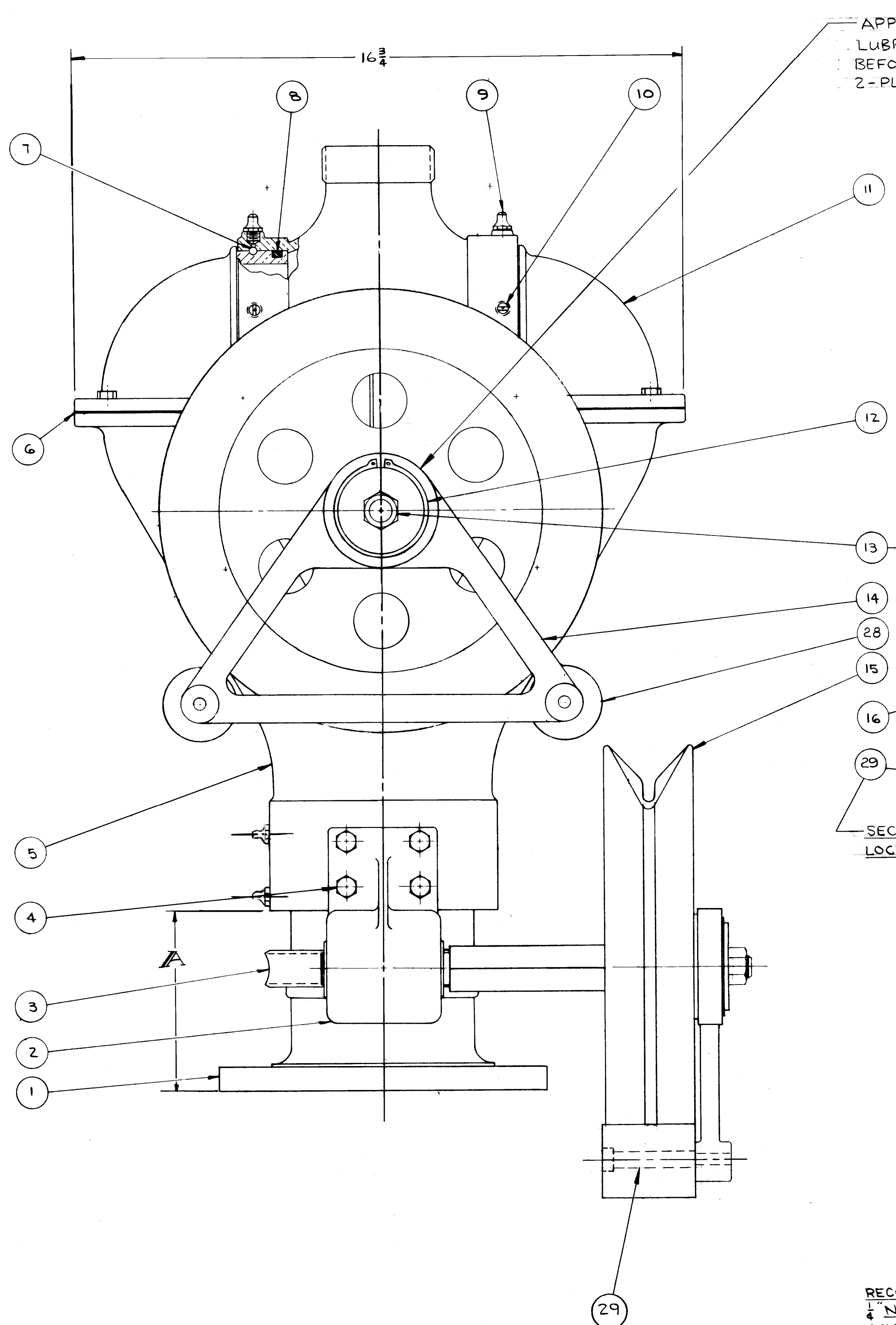
MANUAL ELEVATED 299-11EL
PAGE 2 OF 6
12/2007

PART
LIST

NOT SHOWN	CAT. 287	2 1/2 X 2 MONITOR DISCHARGE TUBE ASSY.	1
NOT SHOWN	CAT. 181	TIP-PLAIN 2 1/2 X 2 DISCHARGE	1
1	1525-C	BASE-MONITOR	
	5463-B	3 A.S.A. FLANGE (125-150")	
1	1526-C	BASE-MONITOR	
	5463-C	3 A.S.A. FLANGE (250-300")	
1	15257-C	BASE-MONITOR	
	5463-A	4 A.S.A. FLANGE (125-150")	1
1	15263-C	BASE-MONITOR	
	5463-F	4 A.S.A. FLANGE (250-300")	
NOT SHOWN	15273-C	BASE-MONITOR	
	6274	4 TILT FEM.	
1	15262-C	BASE-MONITOR	
	5463-E	5 A.S.A. FLANGE (125-150")	
1	15261-C	BASE-MONITOR	
	5463-D	5 A.S.A. FLANGE (250-300")	
1	15264-C	BASE-MONITOR	
	5463-G	6 A.S.A. FLANGE (125-150")	
1	15266-C	BASE-MONITOR	
	5463-J	6 A.S.A. FLANGE (250-300")	
1	15265-C	BASE-MONITOR	
	5463-H	3.5 A.S.A. FLANGE (250-300")	

OPTIONAL PARTS

USE ONE

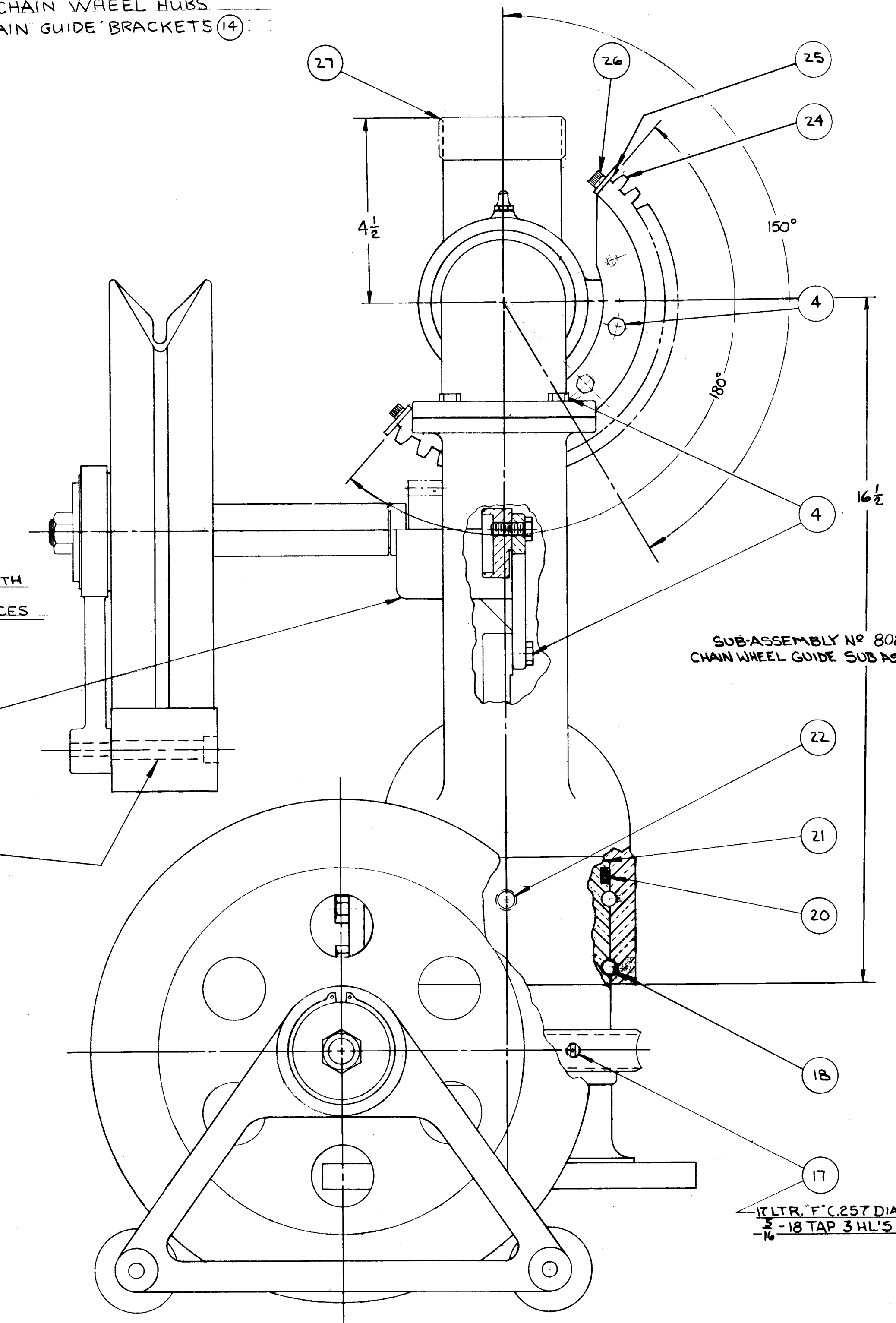


APPLY THIN COATING OF "NEVER STICK" LUBRICANT TO O.D. OF CHAIN WHEEL HUBS BEFORE INSTALLING CHAIN GUIDE BRACKETS (14) 2-PLACES.

SECURE AT ASSY, WITH LOC-TITE CORP'S. # 262 (RED) 2-PLACES

SECURE THD'S WITH LOCTITE # 242 (4-PL'S)

RECOMMEND CHAIN: 1" NON-MAGNETIC ALUMINUM LINK CHAIN REFERENCE: DWG. 23014-A



SUB-ASSEMBLY NO 80203-A CHAIN WHEEL GUIDE SUB ASSY 2 REQ.

ULTR. F (2.57 DIA) DR. 2 DP. 1/16-18 TAP 3 H/L'S

29	16436001	HANDLE SWIVEL BOLT	2	
28	16647A	BUSHIN-CHAIN WHEEL GUIDE	2	
15	71201-C	WHEEL-CHAIN	1	
14	16512-C	BRACKET(CHAIN GUIDE)	1	
12	57681	RING-TFRARC (TRUARC 5100-257-H OR EQUAL)	1	
27	71445-A	WYE-SMALL	1	
26	61037000	CAP-SCREW (STNLS STL) No.10-24X.500-16 SOC.HD	4	
25	62311-A	STOP-GEAR	2	
24	33606-A	GEAR-WORM	1	
23				
22	61268	SCREW-SET (BRASS) .500-20X.250-16, SLT. HD.	2	
21	33051	GASKET-TEFLON 5 O.D. X 4.265 I.D. X .040 THK	1	
20	51365	RING-O TEFLOX COATED 4 3/8 I.D. X 5 1/8 O.D. X 1/4 THK.	1	
19				
18	15011	BALL-.375 DIA. BRASS	84	
17	63671	SCREW-SET 3/16-18 X 1/2. CUP POINT STNLS. ETC.	3	
16	60129-B	5958-B	UPPER GEAR CASE SUB-ASSY	1
13	47476-A	1360	NUT-HEX 5/8-11 BRASS	2
11	25064-B	94226	ELBOW-MONITOR	2
10	61222-A	PS-157	SCREW-SET 3/8-24 X 3/16 SLOT HEAD BRASS	2
9	31001	6317	FITTING-MISC. ALEMITE 1/8 NO 1610	4
8	51301	15062U	RING-O 2 7/8 I.D. X 3 1/4 O.D. X 3/16 THK.	2
7	15005	5958-C	BALL-BRASS 2 DIA.	80
6	51374	71371-D	RING-O AS-568-233 2.875-10 X 3.125-00 X .125	2
5	1114	61162	WYE-LARGE	1
4	61162	33586-B	SCREW-CAP 3/16-18 X 3/8 HEX HEAD STNLS. STL.	19
3	33586-B	5561	GEAR-WORM	1
2	60130-B	6003-B	LOWER GEAR CASE SUB-ASSY	1
1			BASE MONITOR	1

3 1/2" FLANGED BASE 250"-300"	5 13/32
4" FLANGED BASE 125"-150"	5 13/32
6" FLANGED BASE 250"-300"	5 13/32
5" FLANGED BASE 125"-150"	5 13/32
5" FLANGED BASE 250"-300"	5 13/32
4" FLANGED BASE 125"-150"	5 13/32
4" FLANGED BASE 250"-300"	5 13/32
3" FLANGED BASE 125"-150"	5 13/32
3" FLANGED BASE 250"-300"	5 13/32
3" FLANGED BASE 125"-150"	5 13/32

P	PT# 16436001 REPL. 16436001	REV. 0202	E	PT# 63671 REPL. #61261	REV. 0208
N	16430 WAS 16402	REV. 0801	D	3/4" NUTS BRASS	REV. 0204
M	61268 REPL. 61225	REV. 0712	C	PT# 21018 REPL. 21018	REV. 0204
L	61037000 REPL. 61150	REV. 0806	B	PT# 16430 REPL. 16430	REV. 0204
K	PT# 51950 REMOVED	REV. 0507	A	WHL 5" O.D. X 1 1/8 I.D. X 3/4	REV. 0204
J	PT# 51374 REMOVED	REV. 0806			
I	PT# 15011 REPL. # 15002	REV. 0806			
H	WAS 2 REQ	REV. 0708			
G	PT# 31001 4 REQ	REV. 0803			
F	PT# 1114 REPL. 1114	REV. 0801			

RELEASED TO PROD. TB 10-13-68
REPLACES ASSY. DWG. 10-21-68

DATE 10-21-68 PART NO. 294-11CW
SCALE HALF ASSEMBLY

ELKHART BRASS MFG. CO., INC.
ELKHART, INDIANA
ELKHART CHAIN OPERATED MONITOR NOZZLE

294-11CW

MANUAL ELEVATED 294-11CW

ITEM #	PART #	QTY	DESCRIPTION
1	15257001	1	4"150# Flange Base
1	15258001	1 (Opt)	3" 150# Flange Base
1	15260001	1 (Opt)	3" 300# Flange Base
1	15261001	1 (Opt)	5" 300# Flange Base
1	15262001	1 (Opt)	5" 150# Flange Base
1	15263001	1 (Opt)	4" 300# Raised Flange Base
1	15264001	1 (Opt)	6" 150# Flange Base
1	15265001	1 (Opt)	3.5" 300# Flange Base Raise
1	15266001	1 (Opt)	6" 300# Flange Base
1	15273001	1 (Opt)	4" NPT Base
2	80130001	1	Lower Gear Case Sub
3	33596005	1	294-11 Lower Worm Gear
4	61162000	19	Hex Screw
5	71371001	1	Large Wye
6	57379000	2	O-Ring
7	15005000	80	0.250 Brass Ball
8	57301000	2	O-Ring
9	31001000	4	Grease Fitting
10	61222000	2	Slot Screw - Brass
11	28064001	2	Elbow
12	57681000	2	Snap Ring Retainer
13	47476000	2	Hex Nut
14	16512001	2	Chain Bracket
15	71201001	2	Chain Wheel
16	80129001	1	Upper Gear Case Sub
17	63671000	3	Socket Screw
18	15011000	84	.375 Brass Ball
20	57365000	1	O-Ring
21	33051000	1	Gasket
22	61268000	2	Slot Screw - Brass
24	33606005	1	Worm Gear
25	62671001	2	Gear Stop For 294-11
26	61037000	4	Socket Screw
27	71445001	1	Small Wye
28	16647001	2	Guide Bushing
29	16436001	2	Swivel Bolt
NOT SHOWN	44242100	1	Label-Serial Number
NOT SHOWN	61215100	2	Drive Screw S/S



ELKHART BRASS MFG. CO., INC.
ELKHART, INDIANA

THIS DRAWING CONTAINS INFORMATION THAT IS PROPRIETARY TO ELKHART BRASS MFG. CO., INC. AND MAY NOT BE USED TO PRODUCE ANY PARTS, ASSEMBLIES OR PRODUCTS DESCRIBED HEREIN WITHOUT EXPRESS WRITTEN PERMISSION.

MANUAL ELEVATED 294-11CW
PAGE 4 OF 6
12/2007

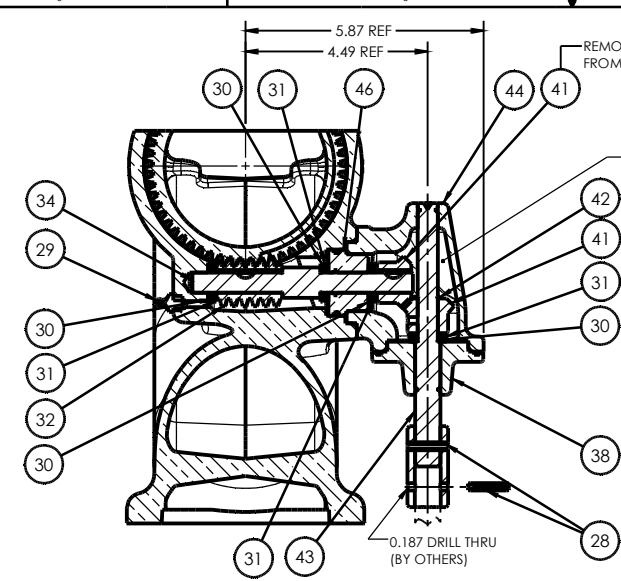
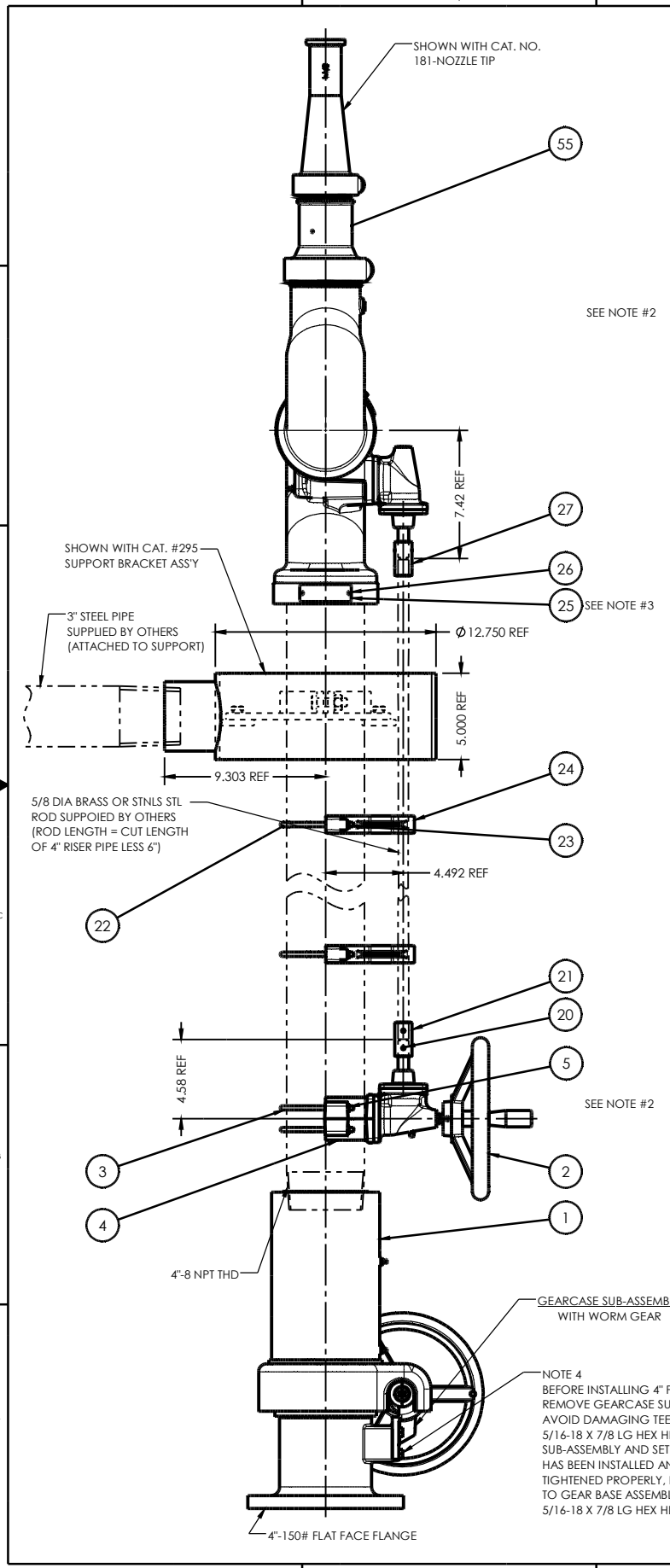
PART
LIST

REV.	ZONE	DESCRIPTION	BY	ECN DATE
D	F1	REVISED AND REDRAWN IN SOLIDWORKS P/N 80762001 WAS P/N 80762201	GDW	1404 08

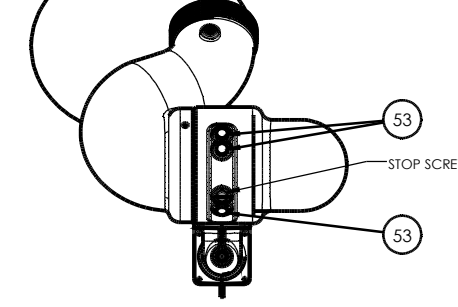
283-B STREAM SHAPER (CHOOSE ONE)

OPTIONAL BASE SUB-ASSEMBLIES (USE ONE)

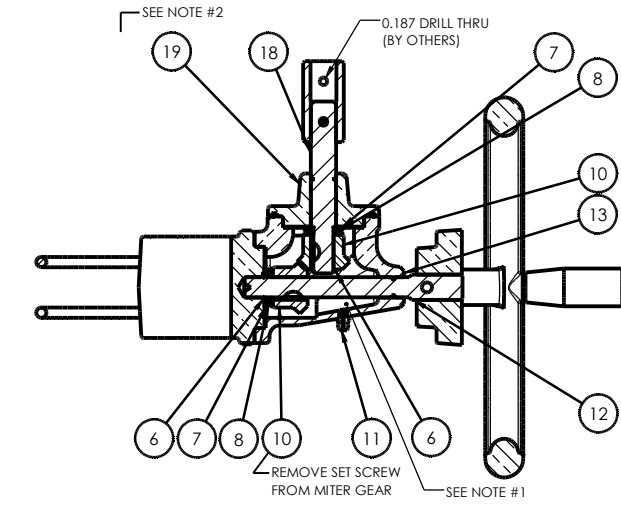
ITEM NO.	PART NUMBER	DESCRIPTION	QTY.
54	80162001	9.5" HANDWHEEL ASSY (BRASS) "W/ 0.875 BORE"	1
47	thrust needle roller bearing_tfi		4
53	51863000	PLUG STOP (BRASS HEX) 8394	3
52	61088001	SCREW (CAM) DRIVE	1
51	15027000	BALL (0.250 DIA) STAINLESS STEEL	124
49	61248000	SCREW-SET (SLOTTED) BRASS 3/8-24 X 0.250-LG	2
48	17914001	BODY - BASE (INLET) 4" NPTF (WITH CAST VANE)	1
47	81054001	OUTLET BODY SUB-ASSEMBLY	1
46	65559001	SPACER BEARING	1
44	20399001	CASE-GEAR (90 Deg) (RIGHT ANGLED BRASS)	1
43	64049001	SHAFT - UPPER GEAR (S/S)	1
42	57590000	RING - EXTERNAL RETAINING	1
41	33692000	GEAR - MITER	2
38	10448001	ADAPTER - FLANGED (BRASS)	1
34	63936001	SHAFT - WORM (S/S) 8294	1
32	71246000	WORM GEAR FOR 8294	1
30	71511000	Washer Thrust for 2940 1/2" SS	8
29	31001000	ALEMITE FITTING	1
28	51232000	PIN ROLL 79-040-187-1.000	2
27	61642001	SLEEVE (5/8)	1
26	61215100	Screw 4x0.187 RD Head Drive SS	2
25	44242000	LABEL - SERIAL NUMBER (UNIVERSAL)	1
24	20431001	CLAMP - PIPE & SHAFT	1
23	47460000	NUT (HEX) 0.250-20 THDS	2
22	16407001	BOLT - "U" (BRASS) FOR 4.0" PIPE	1
23	thrust needle roller bearing_tfi		2
21	61642001	SLEEVE (5/8) FOR REMOTE CONTROLLED ELEVATED MONITOR	1
20	51232000	PIN ROLL 79-040-187-1.000	2
19	10448001	ADAPTER - FLANGED (BRASS)	1
18	64049101	SHAFT - UPPER GEAR (S/S)	1
13	23588001	GEARCASE (90 DEGREE) BRASS	1
12	64048001	SHAFT - HANDWHEEL (S/S)	1
11	31011000	Grease Fitting (3/16 DR-SS)	1
10	33692000	GEAR - MITER	2
8	71511000	Washer Thrust for 2940 1/2" SS	4
6	57590000	RING - EXTERNAL RETAINING	2
5	47460000	NUT (HEX) 0.250-20 THDS	4
4	20430001	CLAMP - 90 DEGREE GEARCASE	1
3	16407001	BOLT - "U" (BRASS) FOR 4.0" PIPE	2
2	80162101	9.5" HANDWHEEL ASSY (BRASS) "W/ 0.875 BORE"	1
55	02517004	283-B STREAM SHAPER (3.5 NHT F X 2.5 NHT M) CP	1
55	02517002	283-B STREAM SHAPER (3.5 NHT F X 2.5 NHT M) SB	1
1	81714001	LOWER GEARCASE & BASE ASSY 6"-300# FLANGE X 4" NPT THD	1
1	80762001	LOWER GEARCASE & BASE ASSY 6"-150# FLANGE X 4" NPT THD	1
1	80386001	LOWER GEARCASE & BASE ASSY 6"-300# FLANGE X 4"-150# FLANGE	1
1	80385001	LOWER GEARCASE & BASE ASSY 4"-150# FLANGE X 4"-150# FLANGE	1
1	80384001	LOWER GEARCASE & BASE ASSY 4"-150# FF FLANGE X 4" NPT THD	1
1	80383001	LOWER GEARCASE & BASE ASSY 4" NPT THD X 4" NPT THD	1



MONITOR & GEARCASE SUB-ASSY SCALE 1:2

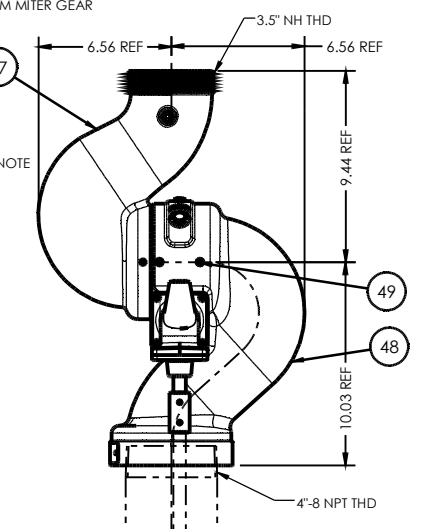


TOP VIEW OF UPPER SUB-ASSY

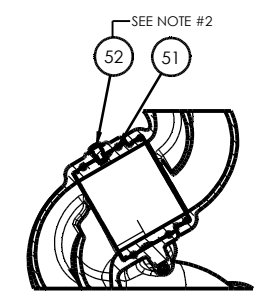


LOWER 90° GEARCASE SUB-ASSY SCALE 1:2

81714001	18-1/2"
80762001	18-1/2"
80386001	18-1/2"
80385001	18-1/2"
80384001	18-1/2"
80383001	15-5/8"
PART NO.	"A" DIM



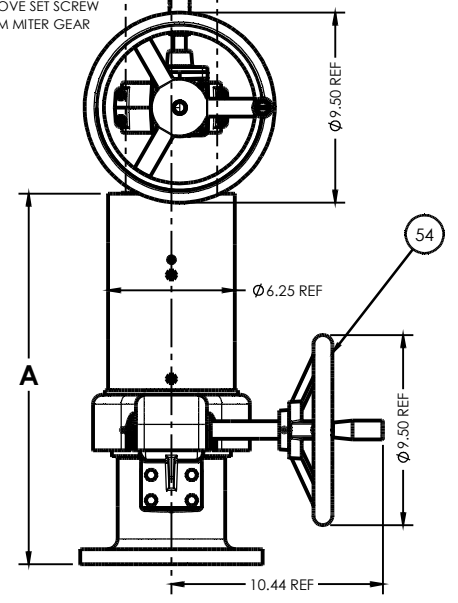
UPPER MONITOR SUB-ASSY P/N 81354001



SECTION A-A

PIPE & SHAFT CALMP SUB-ASSY P/N 80312001 (2 REQ'D)

LOWER 90° GEARCASE SUB-ASSY P/N 81355001



- NOTE:**
- 1) USE LITHIUM MULTIPURPOSE GREASE IN GEAR CASE. FILL HOUSING COMPLETELY.
 - 2) SECURE THDS WITH LOCTITE ADHESIVE #242 (BLUE).
 - 3) LOCATE SERIAL NUMBER TAG IN THIS AREA ON BASE.
 - 4) SEE NOTE 4 IN LOWER LEFT OF DRAWING

ITEM NO.	PART NUMBER	DESCRIPTION	QTY.
8394-02 RC	236.7126	"SPIT-FIRE" REMOTE CONTROLLED ELEVATED MONITOR (1000-GPM)	D
MATERIAL		8394-02 RC	D
REVISION		D	D
SCALE		1:4	1 OF 1