

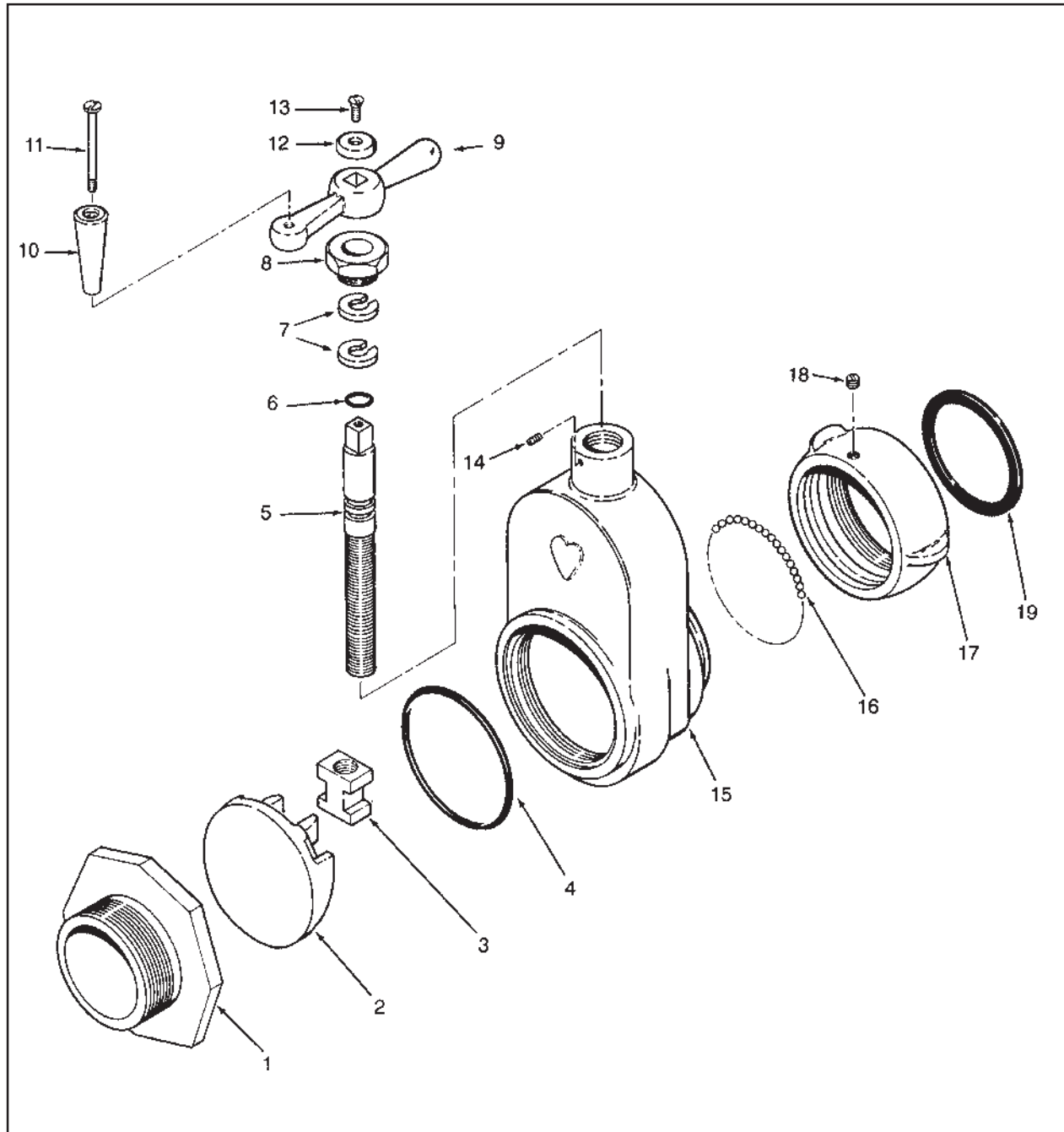
X-86 & X-86A

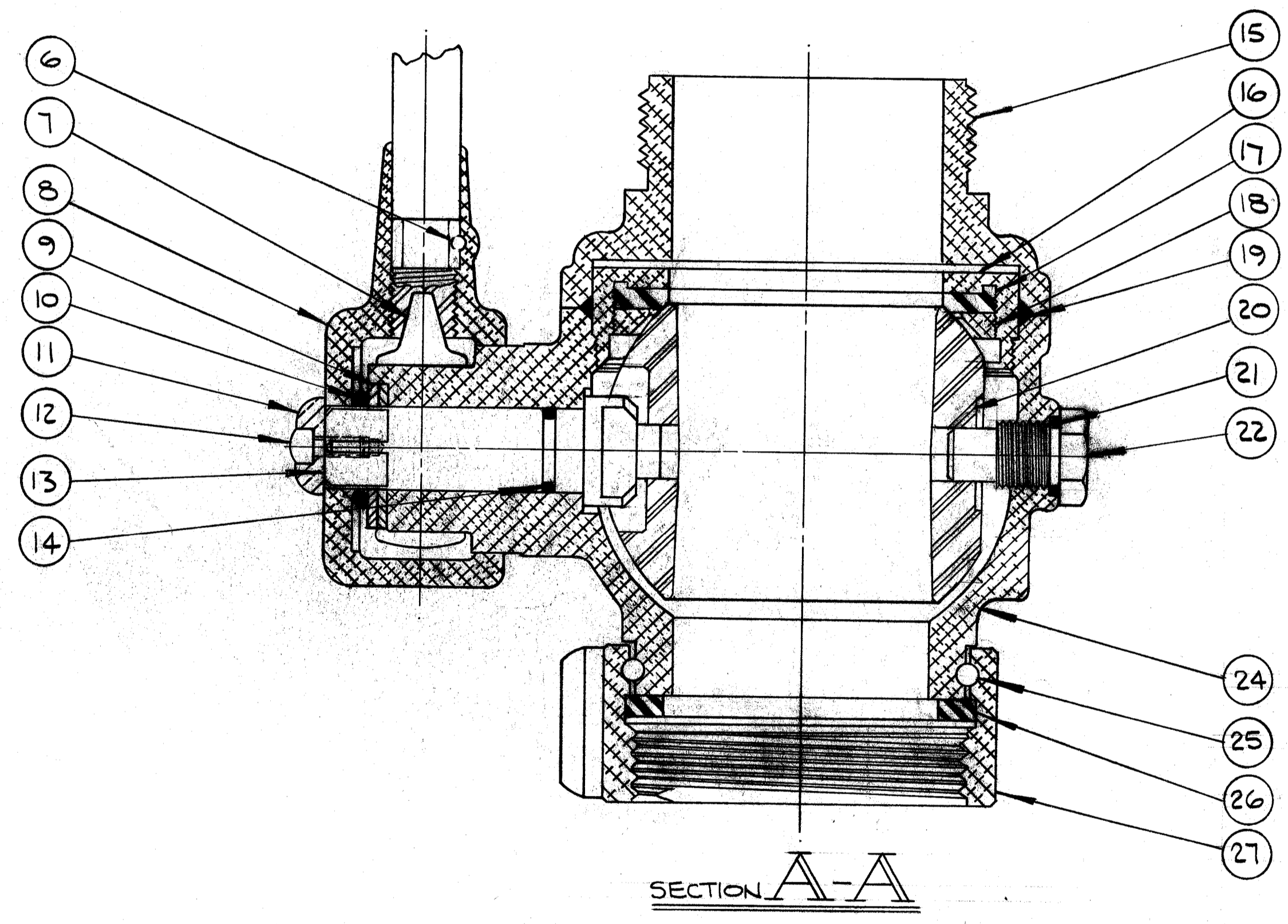
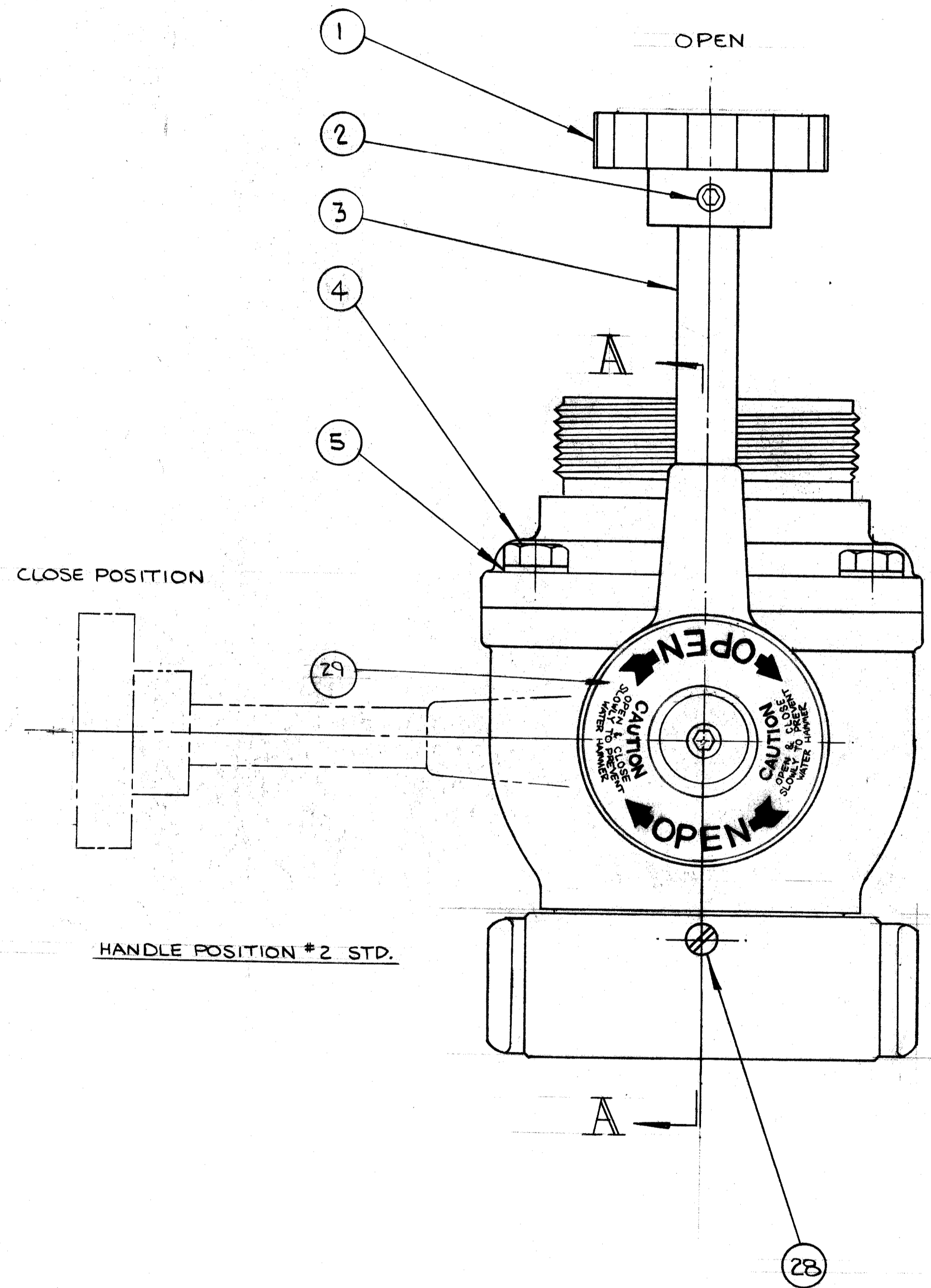
April 1996

INDEX NO.	PART NO.	QTY. REQ.	DESCRIPTION
1	11559	1	2.5" Body Adapter (X-86)
1	11558	1	2.5" Body Adapter (X-86A)
1	80037	1	2.5" Body Adapter w/Leather Seat, O/S (Pre '85)
2	33571	1	Gate (X-86)
2	33573	1	Gate (X-86A)
3	47450	1	Gate Nut
4	57312	1	"O" Ring
5	62657	1	Valve Stem
6	57343	1	"O" Ring
7	71032	2	"C" Washer
8	47631	1	Stem Nut
9	36052	1	Handle
10	36704	1	Handle Swivel
11	16431	1	Swivel Bolt
12	71080	1	Handle Washer
13	61211	1	Handle Screw
14	63685	1	Body Screw
15	16273	1	Body (X-86)
15	16952	1	Body (X-86A)
16	15016	52	.187" Diam. Brass Ball (X-86)
16	15018	52	.187" Diam. S/S Ball (X-86A)
17	62916	1	2.5" R/L Swivel (X-86)
17	63069	1	2.5" R/L Swivel (X-86A)
18	61222	1	Swivel Set Screw (X-86)
18	63674	1	Swivel Set Screw (X-86A)
19	33083	1	2.5" Swivel Gasket
	70062	1	Vial of Grease for Gate

Optional

15	16994	1	Body (X-86A), 2½" NPT Female Inlet for use on 9800 Series LDH appliances
----	-------	---	--





28	63674000	SCREW-SET .575-24 X .156 SLOTT HD. BLACK PLAS	1
27	63069001	SWIVEL-3 R/L NHT-0.5/6	1
26	33083000	GASKET-RUBBER	1
25	15018000	BALLS .187 DIA. S/S 5/2	1

PARTS FOR 2.5 SWIVEL INLET (STD)

15	20122001	CAP-END 2.5 MA.	1
----	----------	-----------------	---

PARTS FOR 2.5 MA. OUTLET (STD)

(E)(B)	29	44257000	LABEL-CAUTION & OPEN (CW)	1
	24	16323001	BODY-VALVE C/A	1
(F)				
	22	61192000	SCREW-PIVOT	1
	21	57321000	RING-O .489 I.D. X .070W AS-568-014	1
(C)	20	17303000	BALL-VALVE	1
(D)	19	57390000	RING-O AS-568-291 3.859-.10 X .139 W.	1
(A)	18	57273001	RING-LOCK	1
	17	61391000	SEAT-VALVE	1
(A)	16	58886001	RETAINER-SEAT	1
	14	57295000	RING-O .614 I.D. X .070W AS-568-016	1
(A)	13	63756001	SHAFT-ACTUATOR	1
	12	61037000	SCREW-CAP #10-24 X .50 SOC. HD. S/S	1
	11	71082004	WASHER-HANDLE	1
(G)	10	57395000	RING-O .672 I.D. X .103W AS-568-114	1
	9	51812001	PLATE-STOP	2
(B)	8	15800001	BODY-HANDLE	1
(A)	7	61706001	SLEEVE-EXPANDING	1
	6	51246000	SCREW-TO-24X-25-0875-10-04	1
	5	71150000	WASHER-FLAT .625 O.D. X .390 I.D. X .063 W	4
	4	63190000	SCREW-CAP ALLEN HD .375-1/2 X .875 LG. CAP. P.T.	4
	3	61519001	ROD-HANDLE	1
	2	63671000	SCREW-SET .250-20 X .36 SOC. HD. CUP POINT S/S	1
(H)	1	42034001	KNOB-LOCK (ALUM)	1

BALL SEAT SUB-ASSY
P/N 80798001

HANDLE SUB-ASSY
PT # 80664001

C	PT 17303 REP 15061	REV. 11	8411
B	ADD LABEL (44245)	REV. 12	8503
(S)	PT 61706 REP 61701	REV. 10	8409
(G)	PT 57273 REP 57264		
(S)	PT 57321 REP 57314		
(S)	PT 57395 REP 57382		
(S)	PT 63190 REP 63184		
(S)	PT 80798 REP 80384		
	REVEN. DWG. REL. TO PROD.		

H1	PIN 65232000 WAS P/N 51246000	P/AE	1402
H	42034001 REPL 42054000	REV. 11	0810
G	21 PT 57273 REP 57264	REV. 10	0208
F	REMOVED P/N 51885000	REV. 06	0808
E	44257 REPL 44245	REV. 06	0808
D	PT 57314 REP 57390	REV. 06	0808

NO.	PART NO.	PART NAME	REQ.
ELKHART BRASS MFG. CO., INC. ELKHART, INDIANA			
IN-LINE VALVE (ALUM.)			
SCALE FULL			
DATE 12-8-72			
CHKD BY KLP			
APP'D BY			
B-96A 2.5x2.5			
FRACTIONS ± .010			
DECIMALS ± .005			
ANGLES ± 1°			
REMOVE ALL BURRS AND SHARP CORNERS UNLESS OTHERWISE SPECIFIED			
DO NOT SCALE PRINT			

ITEM NUMBER (03723001) B-96A 2.5x2.5 (ALUM) REV. H1

PART NO.	QUANTITY PER UNIT	DESCRIPTION
42054	1*	Handle Knob
63677	1*	Set Screw
61519	1*	Handle Rod
63790	4	Cap Screw (.375"-16 x .875")
71150	4	Flat Washer
51246	1*	Roll Pin
61706	1	Expanding Sleeve
15800	1*	Handle Body
51812	2	Stop Plate
57395	1	"O" Ring
71082	1	Handle Washer
61037	1	Cap Screw
63756	1	Actuator Shaft
57295	1	"O" Ring for Actuator Shaft
20122	1	2.5" Male End Cap
58886	1**	Seat Retainer
61391	1**	Valve Seat
57273	1**	Lock Ring for Seat
57390	1	"O" Ring
17303	1	Valve Ball
57321	1	"O" Ring for Pivot Screw
61192	1	Pivot Screw
16323	1	Valve Body
44257	1	Caution and Open Label (Clockwise)
63069	1	2.5" R/L Swivel
63674	1	Set Screw
15018	52	.187" Diameter S/S Ball
33083	1	2.5" Rubber Gasket

* These parts make up Handle Sub-Assembly (P/N 80664)

** These parts make up Seat Sub-Assembly (P/N) 80798)