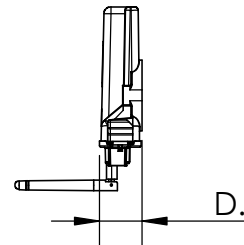
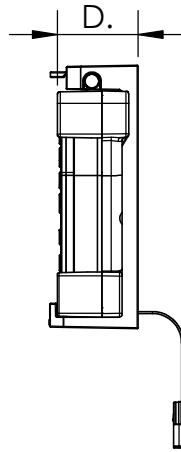
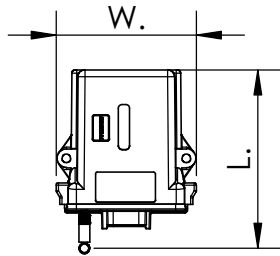
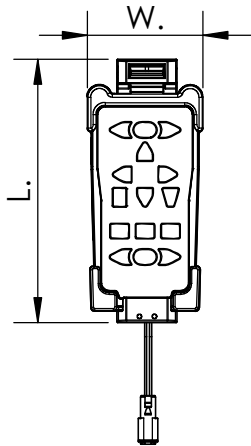
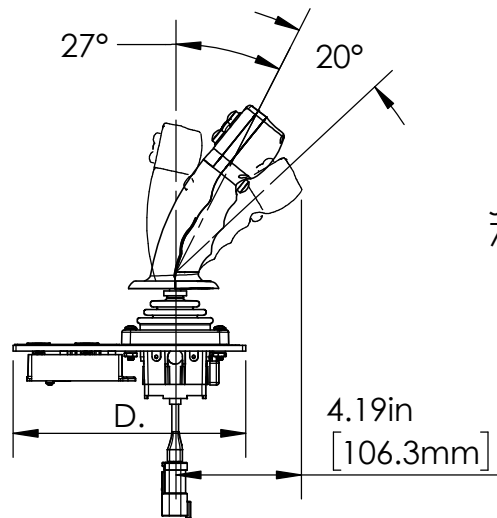
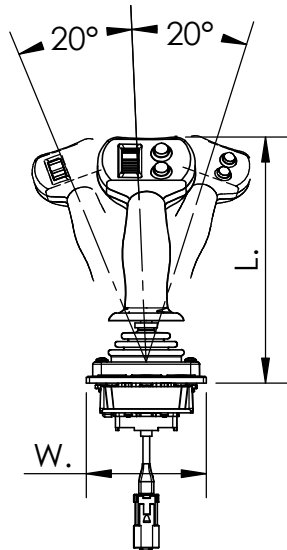


PANEL MOUNT
CONTROLLER
7010X2 (02007010)

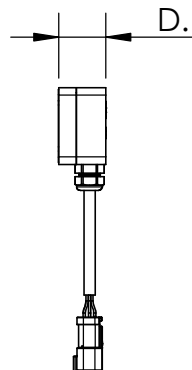
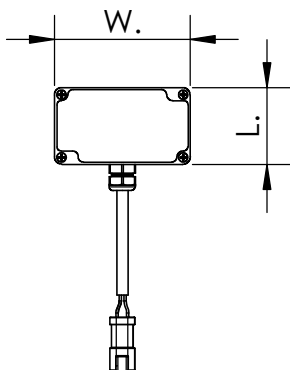


HANDHELD/DOCK
ASSEMBLY KIT
7015X2 (02007015)

- 7015X2WH
- 7015X2DS
- 7015X2GW



JOYSTICK
7030X2 (02007030)



POSITION
FEEDBACK MODULE
7051X2 (02007051)




THIS DRAWING CONTAINS INFORMATION THAT IS PROPRIETARY TO ELKHART BRASS MFG CO., INC. AND MAY NOT BE USED TO PRODUCE ANY PARTS, ASSEMBLIES OR PRODUCTS DESCRIBED HEREIN WITHOUT EXPRESS WRITTEN PERMISSION

EXM2 CONTROLS
PAGE 1 OF 2
08/06/2019

DIMENSIONAL
DRAWING

**EXM CONTROLS
DIMENSIONAL TABLE**

MODEL	LENGTH	DEPTH	WIDTH
PANEL MOUNT CONTROLLER	7.54 in [191.52mm]	1.48 in [37.60mm]	3.85 in [97.79mm]
HANDHELD/DOCK ASS'Y KIT	8.78 in [223.01mm]	2.70 in [68.58mm]	3.85 in [97.79mm]
GATEWAY	5.95 in [151.13mm]	1.42 in [36.07mm]	4.68 in [118.87mm]
JOYSTICK	8.20 in [208.28mm]	7.75 in [196.85mm]	4.00 in [101.60mm]
POSITION FEEDBACK	2.56 in [65.02mm]	1.58 in [40.13mm]	4.53 in [115.06mm]

 ELKHART BRASS Fire Fighting Equipment	
<small>THIS DRAWING CONTAINS INFORMATION THAT IS PROPRIETARY TO ELKHART BRASS MFG CO., INC. AND MAY NOT BE USED TO PRODUCE ANY PARTS, ASSEMBLIES OR PRODUCTS DESCRIBED HEREIN WITHOUT EXPRESS WRITTEN PERMISSION</small>	
EXM2 CONTROLS PAGE 2 OF 2 08/06/2019	DIMENSIONAL DRAWING