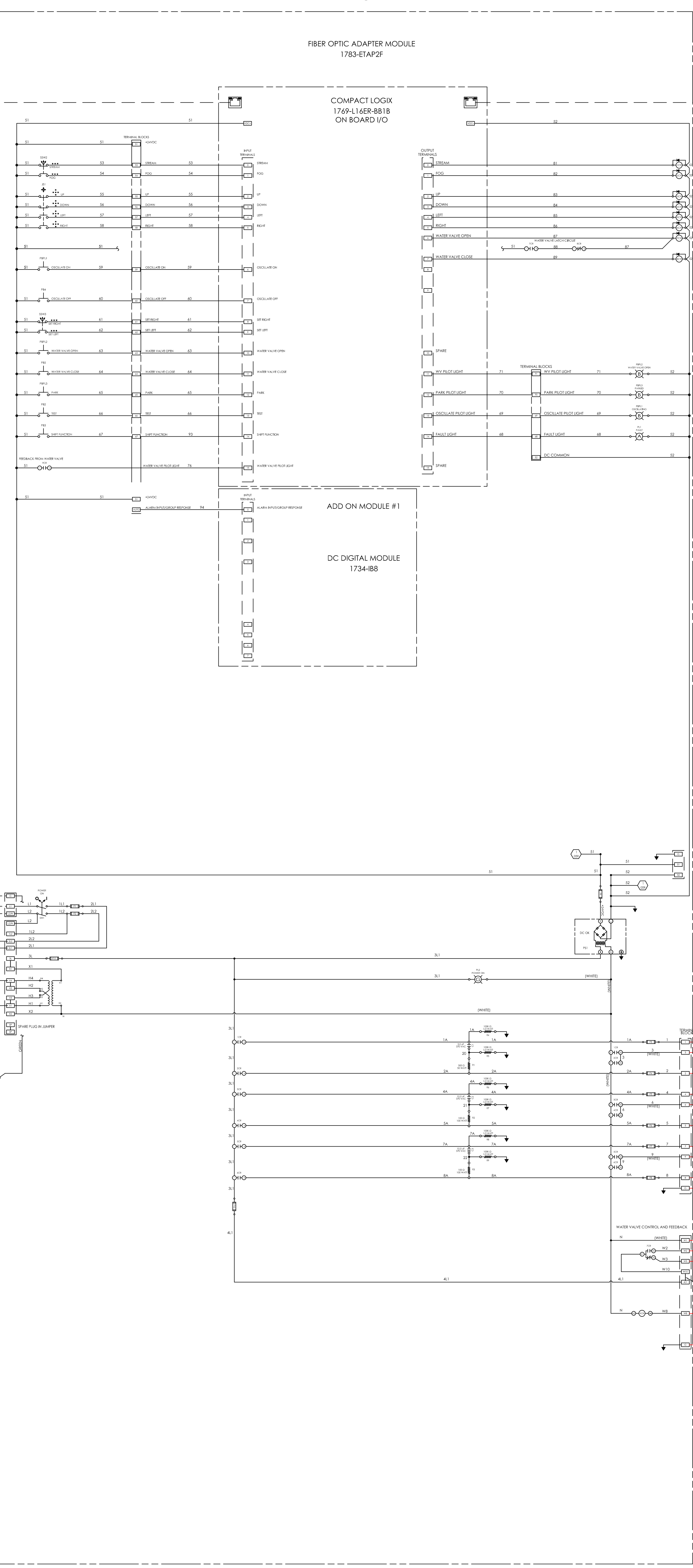


MMCP

RUNG NUMBER
001
002
003
004
005
006
007
008
009
010
011
012
013
014
015
016
017
018
019
020
021
022
023
024
025
026
027
028
029
030
031
032
033
034
035
036
037
038
039
040
041
042
043
044
045
046
047
048
049
050
051
052
053
054
055
056
057
058
059
060
061
062
063
064
065
066
067
068
069
070
071
072
073
074
075
076
077
078
079
080
081
082
083
084
085
086
087
088
089
090
091
092
093
094
095
096
097
098
099
100
101
102
103
104
105
106
107
108
109
110
111
112
113
114
115
116
117
118
119
120
121
122
123
124
125
126
127
128
129
130
131
132
133
134
135
136
137
138
139
140
141
142
143
144
145
146
147
148
149
150



WATER VALVE PLOUSE JUMPER
JUMPER POSITION WIRE & WIRE
THE WATER VALVE PLOUSE IS CONNECTED IN
PARALLEL WITH THE WATER VALVE RELAY,
PROVIDING PROOF OF SELECTION.

JUMPER POSITION WIRE & WIRE
THE WATER VALVE PLOUSE IS SWITCHED BY A
LIMIT SWITCH IN THE WATER VALVE, PROVIDING
TRUE PROOF OF VALVE POSITION.

PANEL POWER
120VAC, 20/40/60
6.3 AMP MAX
250VAC, 20/40/60
3.2 AMP MAX
48VDC, 20/40/60
1.6 AMP MAX
SEE NOTE (E).

JUMPER
FACTORY DEFAULT JUMPER
CONFIGURATION & SHOWING
CONFIGURATION & SHOWING
CONFIGURATION & SHOWING
CONFIGURATION & SHOWING
SEE TABLE IN THE DRAWING FOR
OTHER VOLTAGE CONFIGURATIONS.

TABLE 1

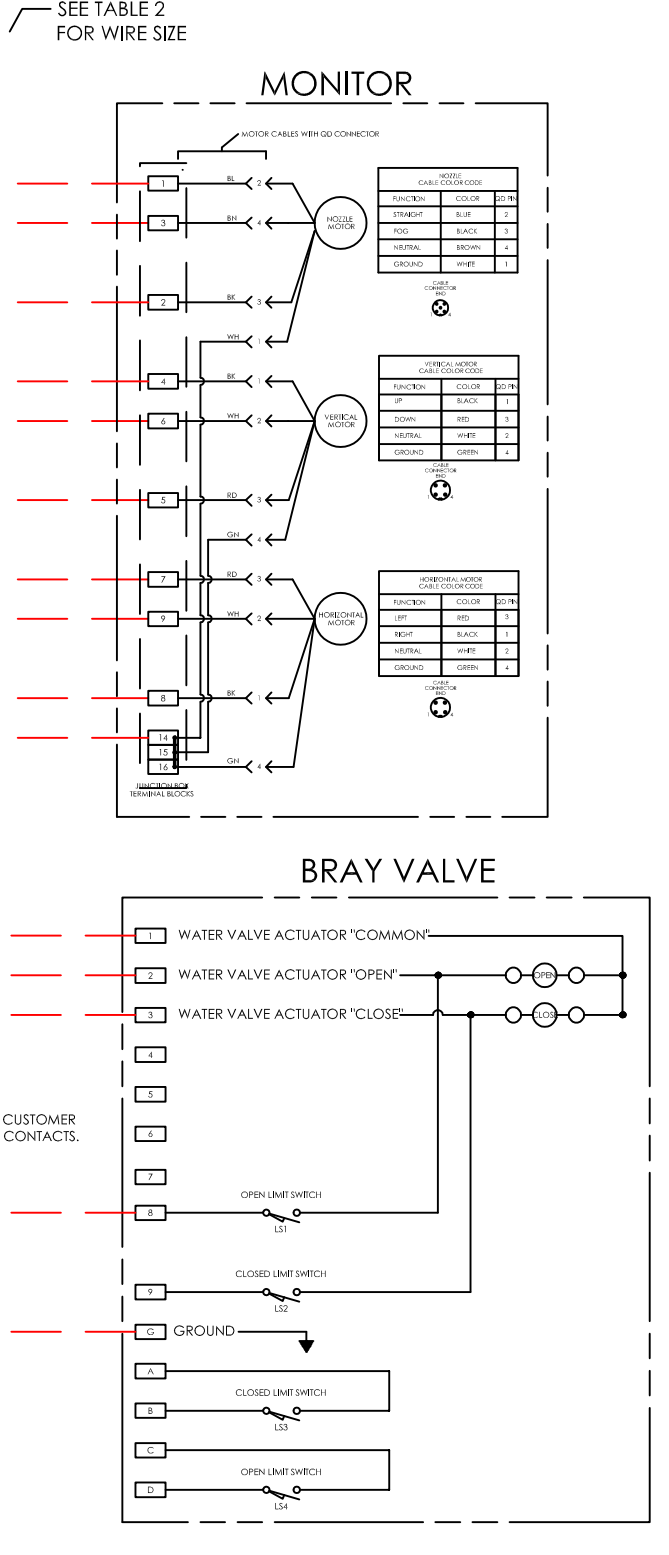
WIRE SIZE FOR CONDUCTORS BETWEEN
MONITOR AND/OR CONTROL PANEL AND
GENERATOR CONTROL PANEL

CONDUCTOR LENGTH	WIRE SIZE
UP TO 75 FEET (23 M)	14 AWG (2.08 mm ²)
75 TO 150 FEET (23 M)	12 AWG (3.31 mm ²)
150 TO 225 FEET (47 M)	10 AWG (5.26 mm ²)
225 TO 300 FEET (67 M)	8 AWG (8.37 mm ²)

TABLE 2

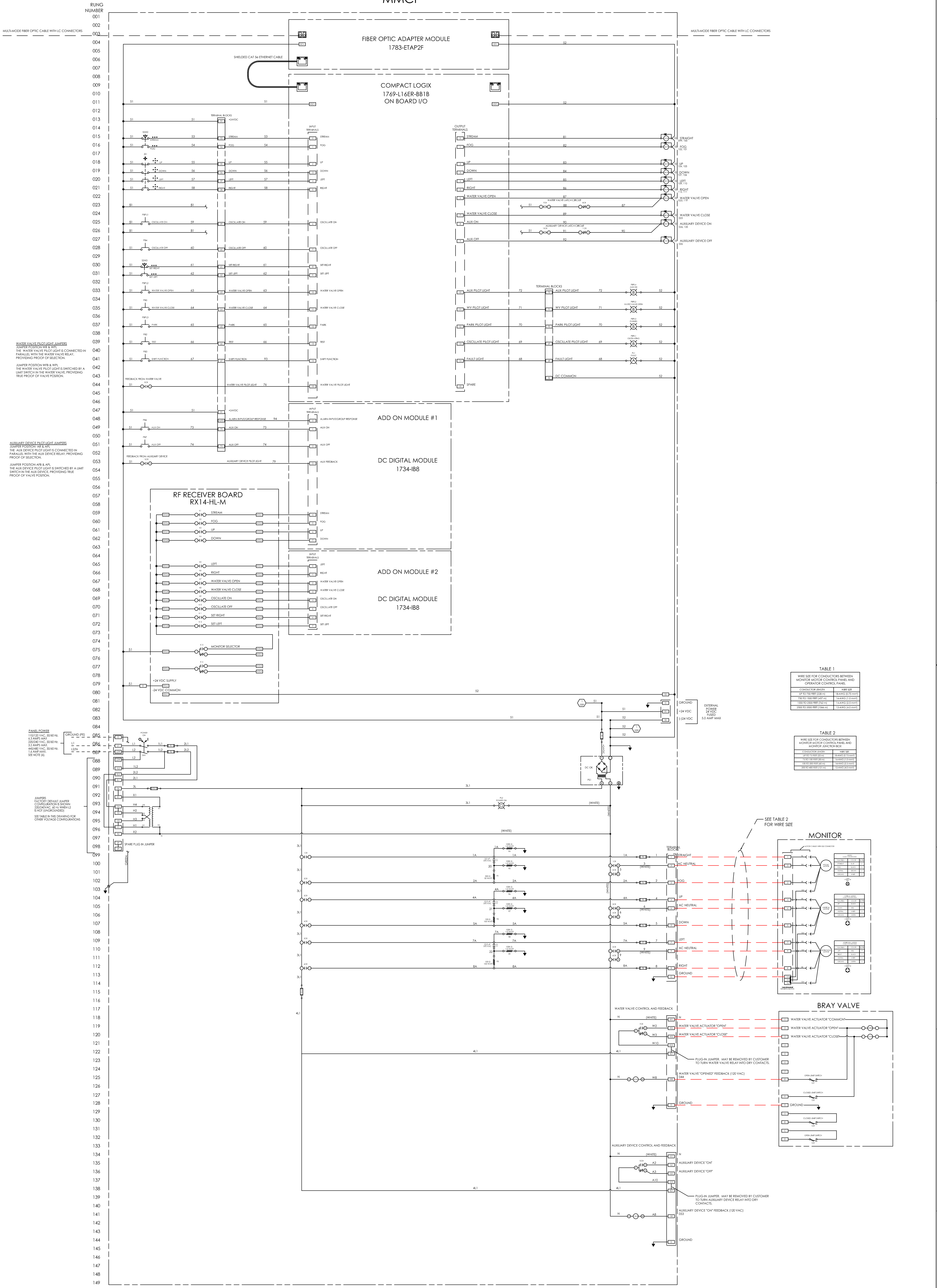
WIRE SIZE FOR CONDUCTORS BETWEEN
MONITOR AND/OR CONTROL PANEL AND
WATER VALVE CONTROL

CONDUCTOR LENGTH	WIRE SIZE
UP TO 75 FEET (23 M)	14 AWG (2.08 mm ²)
75 TO 150 FEET (23 M)	12 AWG (3.31 mm ²)
150 TO 225 FEET (47 M)	10 AWG (5.26 mm ²)
225 TO 300 FEET (67 M)	8 AWG (8.37 mm ²)



REV.	DESCRIPTION	BY	E. C. N.
A	PLC CHANGED FROM L16 TO L19	BWE	190338

MMCP



WATER VALVE PILOT LIGHT JUMPERS
 JUMPER POSITION WIRE & WIRE THE WATER VALVE PILOT LIGHT IS CONNECTED IN PARALLEL WITH THE WATER VALVE RELAY, PROVIDING PROOF OF SELECTION.

JUMPER POSITION WIRE & WIRE THE WATER VALVE PILOT LIGHT IS SWITCHED BY A LIMIT SWITCH IN THE WATER VALVE, PROVIDING TRUE PROOF OF VALVE POSITION.

AUXILIARY DEVICE PILOT LIGHT JUMPERS
 JUMPER POSITION WIRE & WIRE THE AUXILIARY DEVICE PILOT LIGHT IS CONNECTED IN PARALLEL WITH THE AUXILIARY DEVICE RELAY, PROVIDING PROOF OF SELECTION.

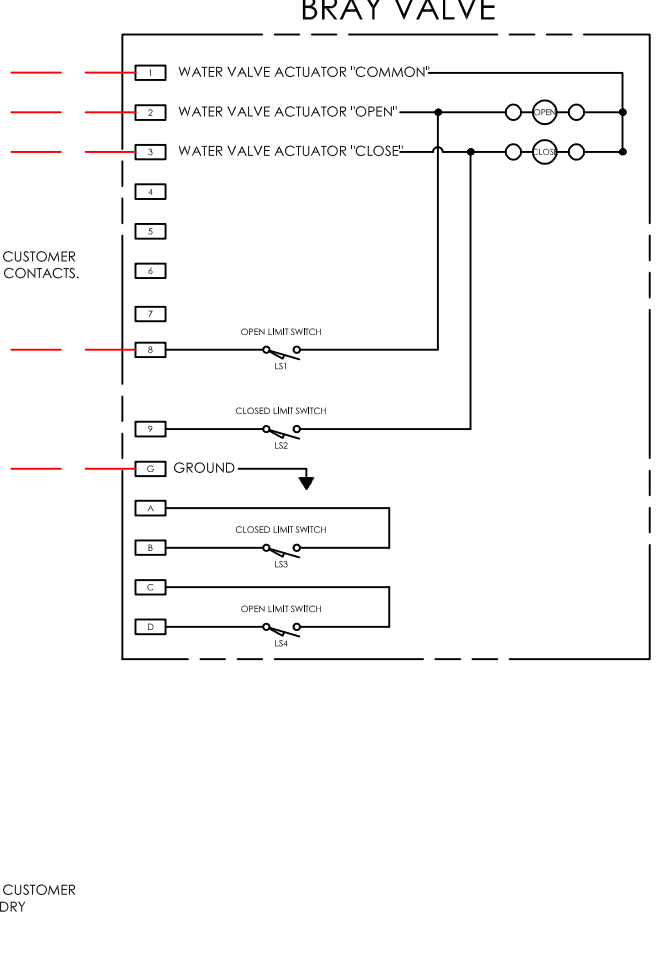
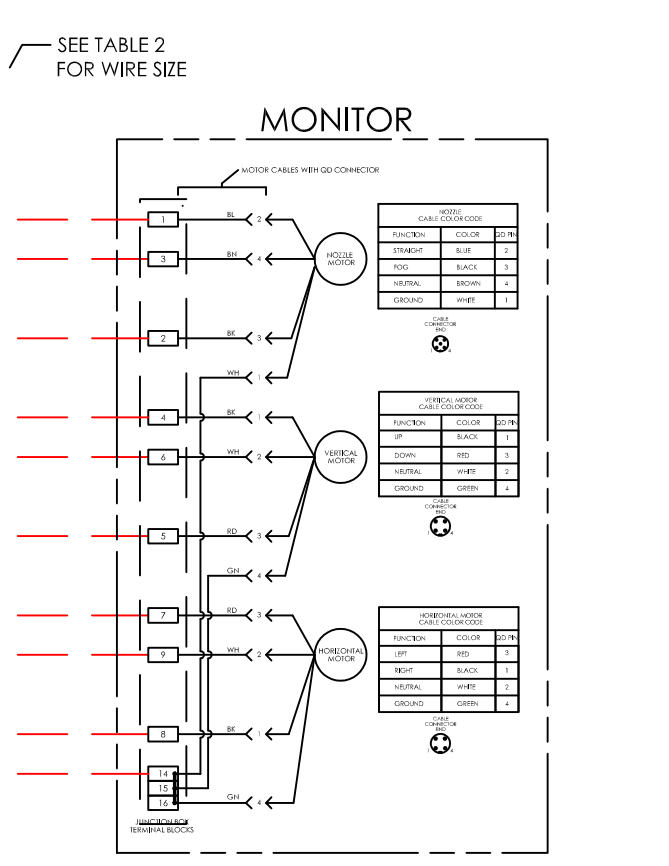
JUMPER POSITION WIRE & WIRE THE AUXILIARY DEVICE PILOT LIGHT IS SWITCHED BY A LIMIT SWITCH IN THE AUXILIARY DEVICE, PROVIDING TRUE PROOF OF VALVE POSITION.

TABLE 1

CONDUCTOR SIZE	WIRE SIZE
UP TO 12 AWG (30-14)	14 AWG (2.08 mm)
12 TO 18 AWG (14-10)	16 AWG (2.08 mm)
18 TO 24 AWG (10-8)	18 AWG (2.08 mm)
24 TO 30 AWG (8-6)	20 AWG (2.08 mm)

TABLE 2

CONDUCTOR SIZE	WIRE SIZE
UP TO 12 AWG (30-14)	14 AWG (2.08 mm)
12 TO 18 AWG (14-10)	16 AWG (2.08 mm)
18 TO 24 AWG (10-8)	18 AWG (2.08 mm)
24 TO 30 AWG (8-6)	20 AWG (2.08 mm)



ELKHART BRASS MFG. CO., INC. 1300 WEST BROADWAY AVENUE, BRIDGE PLAZA, USA <small>This print and all data contained hereon is the sole and exclusive property of Elkhart Brass Mfg. Co., Inc. and will not be disclosed to others without the consent of Elkhart Brass Mfg. Co., Inc. This print must be returned to Elkhart Brass Mfg. Co., Inc. Copyright © 2013 by Elkhart Brass Mfg. Co., Inc.</small>		DRAWN BY: BWE CHECKED BY: BWE DATE: 10/15/2018 DATE: 5/28/2019	ELKHART BRASS Fire Fighting Equipment
MATERIAL: N/A		WEIGHT (LBS): CAT. NO. INDUSTRIAL SYSTEMS	
TOLERANCE UNLESS OTHERWISE SPECIFIED: 2 PLACE DEC. ± .060" 3 PLACE DEC. ± .030" ANGLES ± 1°		DESCRIPTION: GEN II NETWORKED MMCP - NON HAZARDOUS WIRING DIAGRAM - ALL OPTIONS SIZE: D PART NUMBER: 81471114 REV. A	
UNLESS OTHERWISE SPECIFIED DIMENSIONS ARE IN INCHES. ALL TITLES AND FIGURES 8.009 DO NOT SCALE PRINT. INTERPRET DIMENSIONS AND TOLERANCES PER ASME Y14.5M 1994.		CAD SCALE: SHEET 3 OF 3	