

TO CIRCUIT BOARD P2

POSITION	WIRE SIZE	COLOR	FUNCTION
1	PLUG		
2	PLUG		
3	PLUG		
4	18 AWG	WHITE	P2-4-SIGNAL
5	18 AWG	BLACK	P2-5-GND
6	18 AWG	RED	P2-6-POWER
7	18 AWG	RED	P2-7-POWER
8	18 AWG	BLACK	P2-8-GND
9	18 AWG	WHITE	P2-9-SIGNAL
10	PLUG		
11	PLUG		
12	PLUG		

INPUT POWER HARNESS

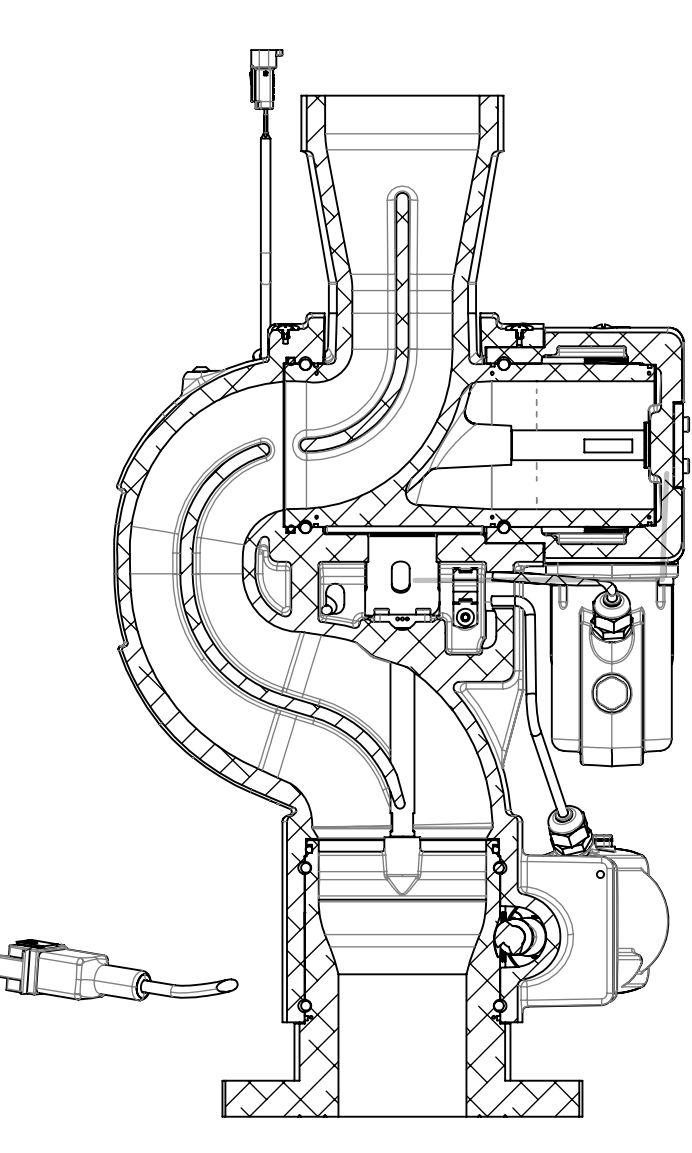
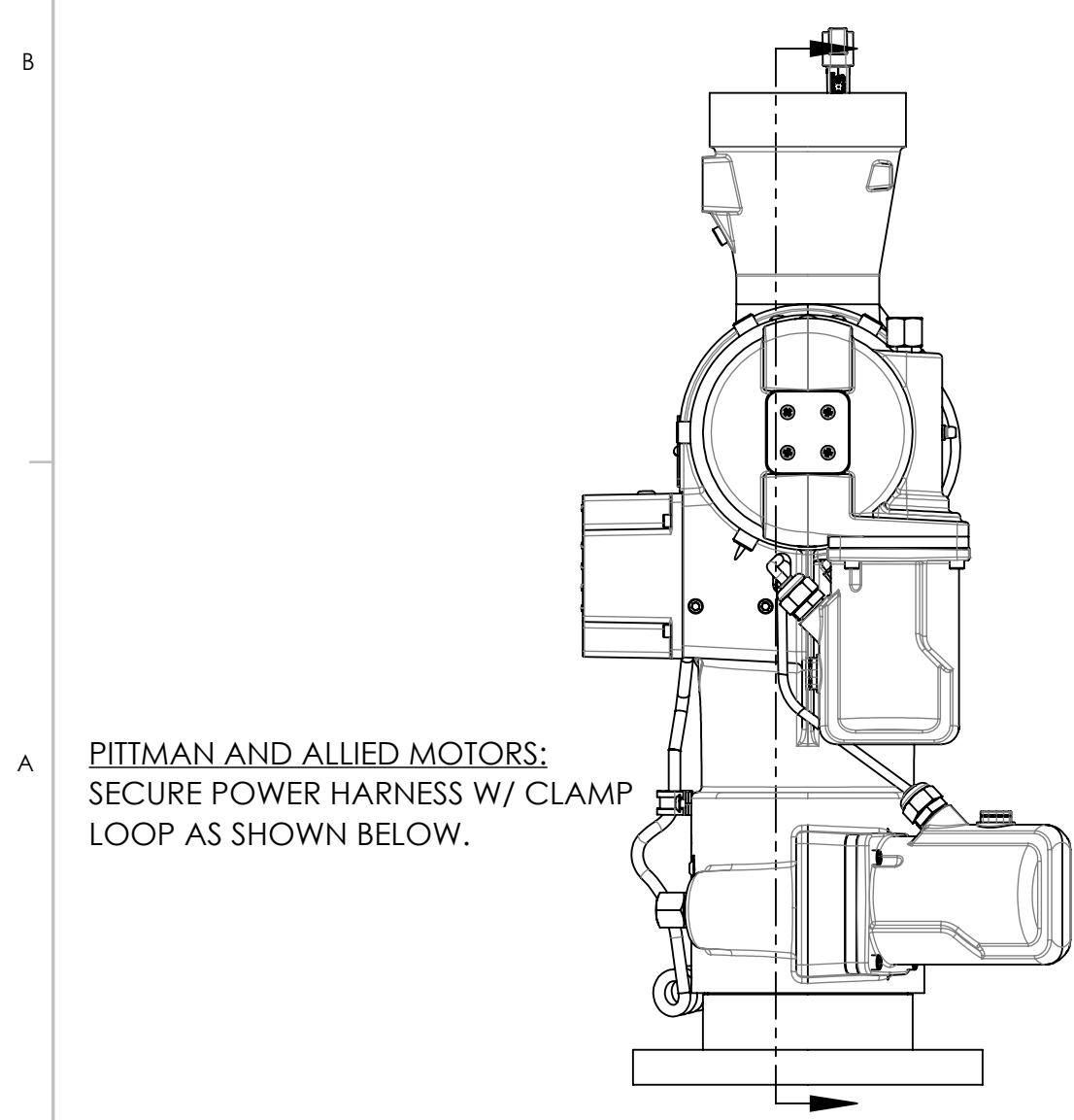
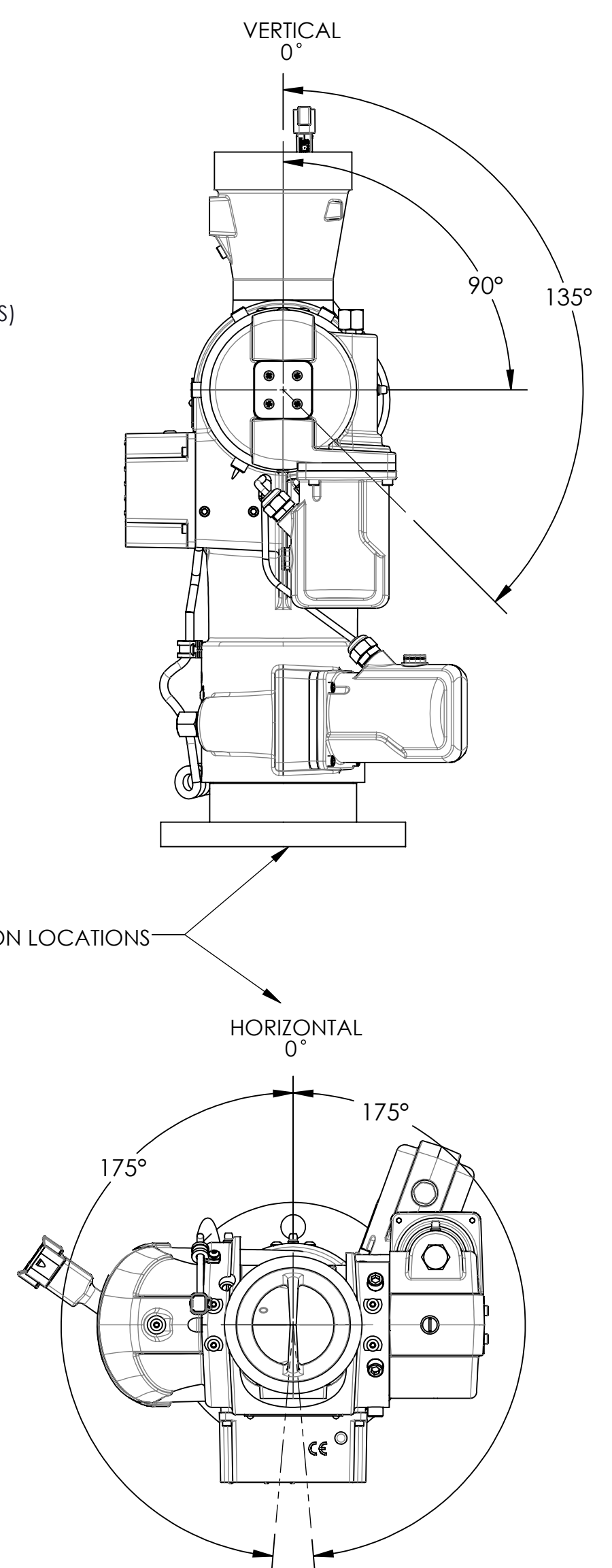
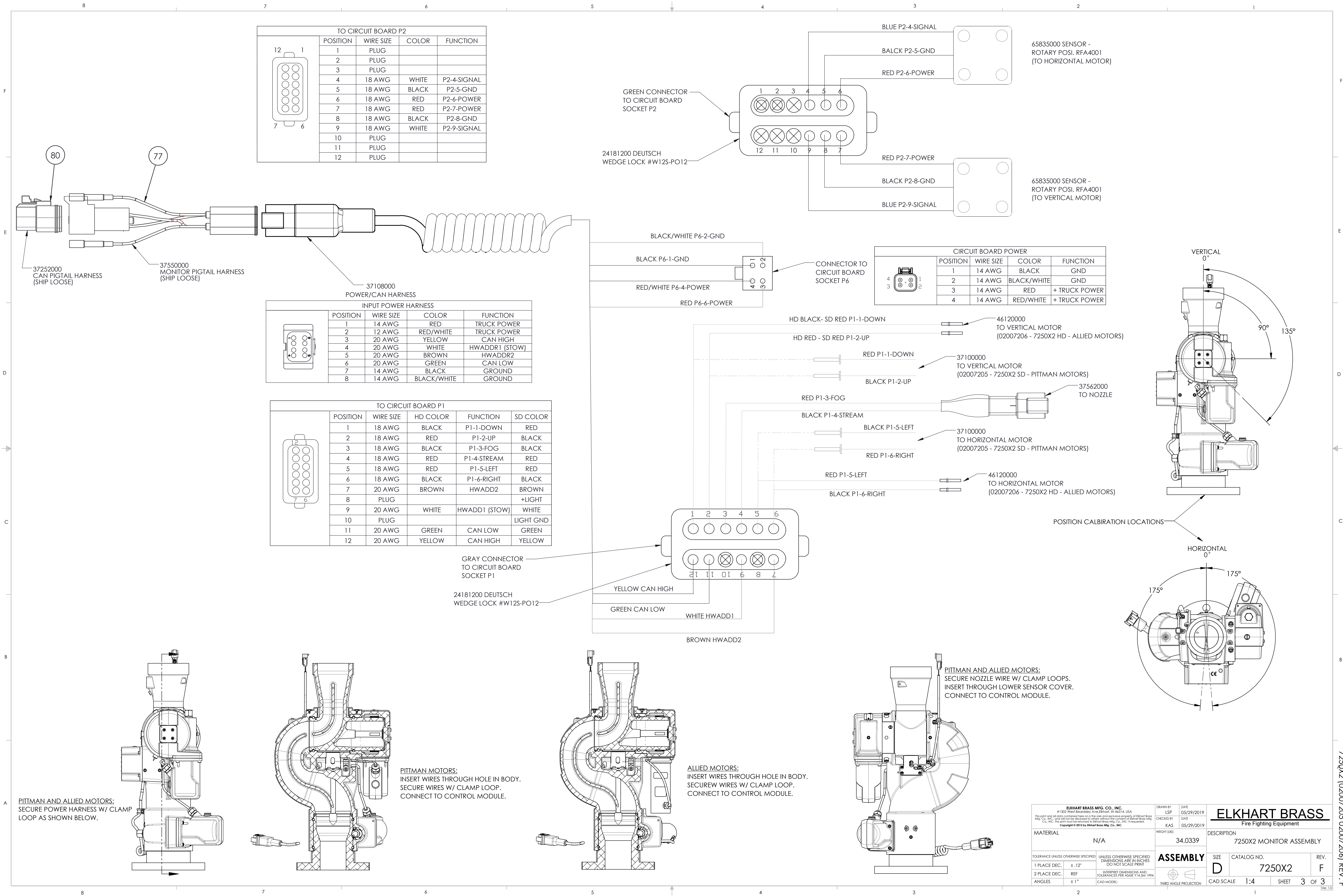
POSITION	WIRE SIZE	COLOR	FUNCTION
1	14 AWG	RED	TRUCK POWER
2	12 AWG	RED/WHITE	TRUCK POWER
3	20 AWG	YELLOW	CAN HIGH
4	20 AWG	WHITE	HWADDR1 (STOW)
5	20 AWG	BROWN	HWADDR2
6	20 AWG	GREEN	CAN LOW
7	14 AWG	BLACK	GROUND
8	14 AWG	BLACK/WHITE	GROUND

TO CIRCUIT BOARD P1

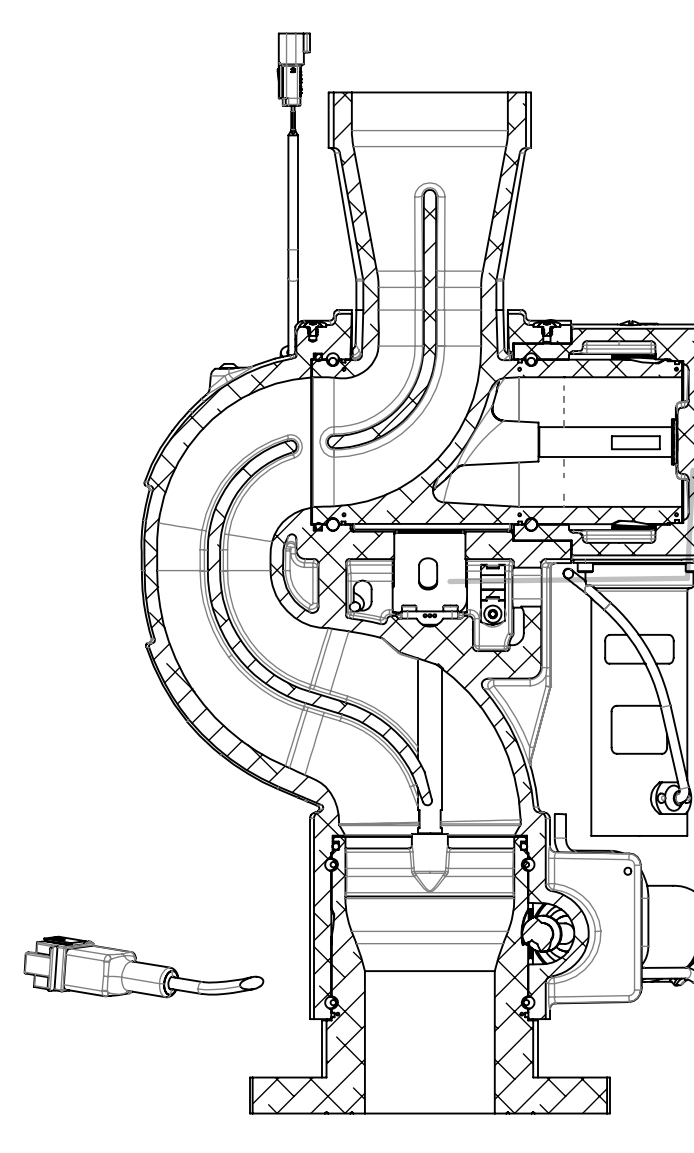
POSITION	WIRE SIZE	HD COLOR	FUNCTION	SD COLOR
1	18 AWG	BLACK	P1-1-DOWN	RED
2	18 AWG	RED	P1-2-UP	BLACK
3	18 AWG	BLACK	P1-3-FOG	BLACK
4	18 AWG	RED	P1-4-STREAM	RED
5	18 AWG	RED	P1-5-LEFT	RED
6	18 AWG	BLACK	P1-6-RIGHT	BLACK
7	20 AWG	BROWN	HWADD2	BROWN
8	PLUG			+LIGHT
9	20 AWG	WHITE	HWADD1 (STOW)	WHITE
10	PLUG			LIGHT GND
11	20 AWG	GREEN	CAN LOW	GREEN
12	20 AWG	YELLOW	CAN HIGH	YELLOW

CIRCUIT BOARD POWER

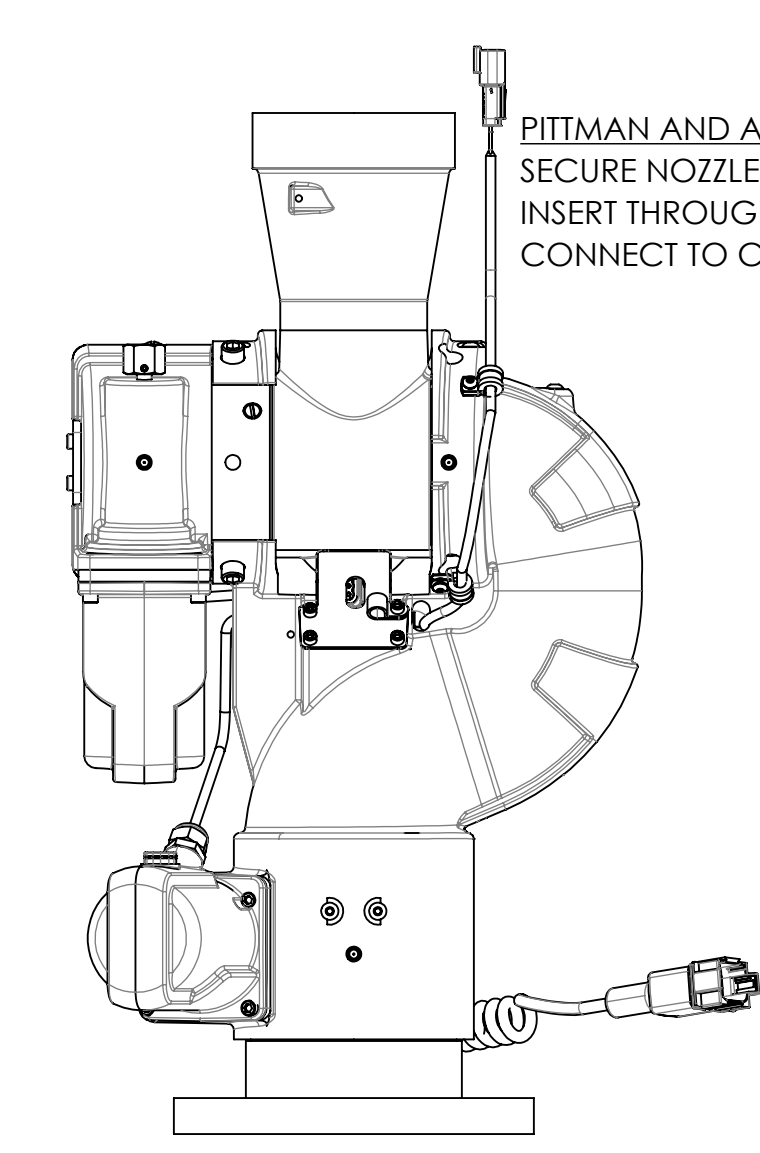
POSITION	WIRE SIZE	COLOR	FUNCTION
1	14 AWG	BLACK	GND
2	14 AWG	BLACK/WHITE	GND
3	14 AWG	RED	+ TRUCK POWER
4	14 AWG	RED/WHITE	+ TRUCK POWER



PITTMAN MOTORS:
INSERT WIRES THROUGH HOLE IN BODY.
SECURE WIRES W/ CLAMP LOOP.
CONNECT TO CONTROL MODULE.



ALLIED MOTORS:
INSERT WIRES THROUGH HOLE IN BODY.
SECURE WIRES W/ CLAMP LOOP.
CONNECT TO CONTROL MODULE.



PITTMAN AND ALLIED MOTORS:
SECURE NOZZLE WIRE W/ CLAMP LOOPS.
INSERT THROUGH LOWER SENSOR COVER.
CONNECT TO CONTROL MODULE.

ELKHART BRASS MFG. CO., INC. <small>#1302 West Broadway Ave. Elkhart, IN 46514, USA</small> <small>This part and all data contained here on is the sole and exclusive property of Elkhart Brass Mfg. Co., Inc. and shall not be disclosed to others without the consent of Elkhart Brass Mfg. Co., Inc. This part must be returned to Elkhart Brass Mfg. Co., Inc. if requested.</small> <small>Copyright © 2012 by Elkhart Brass Mfg. Co., Inc.</small>		DRAWN BY: LSP DATE: 05/29/2019 CHECKED BY: KAS DATE: 05/29/2019	ELKHART BRASS Fire Fighting Equipment
MATERIAL: N/A	WEIGHT (LBS): 34.0339	DESCRIPTION: 7250X2 MONITOR ASSEMBLY	
TOLERANCE UNLESS OTHERWISE SPECIFIED: 1 PLACE DEC. ±.12"	UNLESS OTHERWISE SPECIFIED: DIMENSIONS ARE IN INCHES DO NOT SCALE PRINT	ASSEMBLY	REV. F
2 PLACE DEC. REF.	INTERPRET DIMENSIONS AND TOLERANCES PER ASME Y14.5M 1994	SIZE: D	CATALOG NO. 7250X2
ANGLES ±1°	CAD MODEL:	CAD SCALE: 1:4	SHEET 3 OF 3
		THIRD ANGLE PROJECTION	