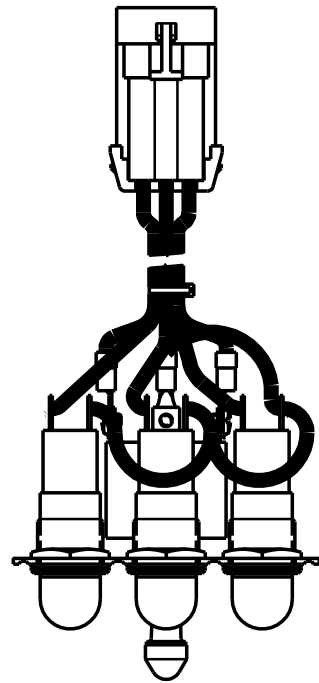
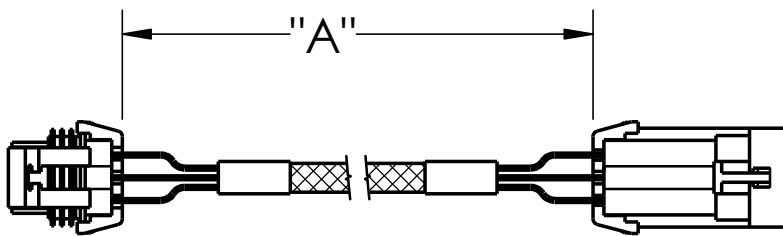


HARNESS - VALVE TO CONTROL MODULE

HARNESS LENGTH		
	DIM "A"	
PART NO.	INCH	FT (REF)
36793300	60	5
36793500	120	10
36793600	240	20
36793700	360	30
36793800	480	40

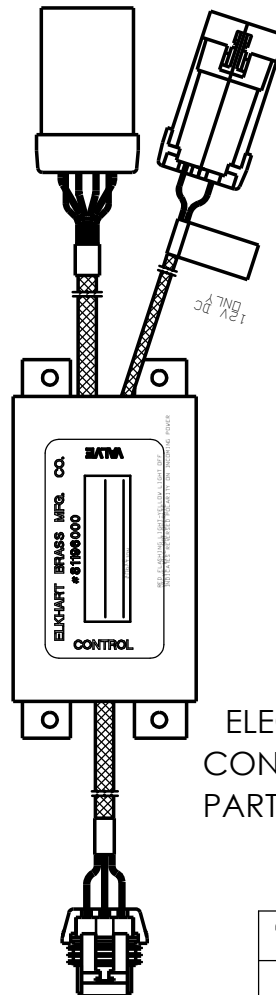


MODULE - SWITCH / INDICATOR
PART NO. 81052000



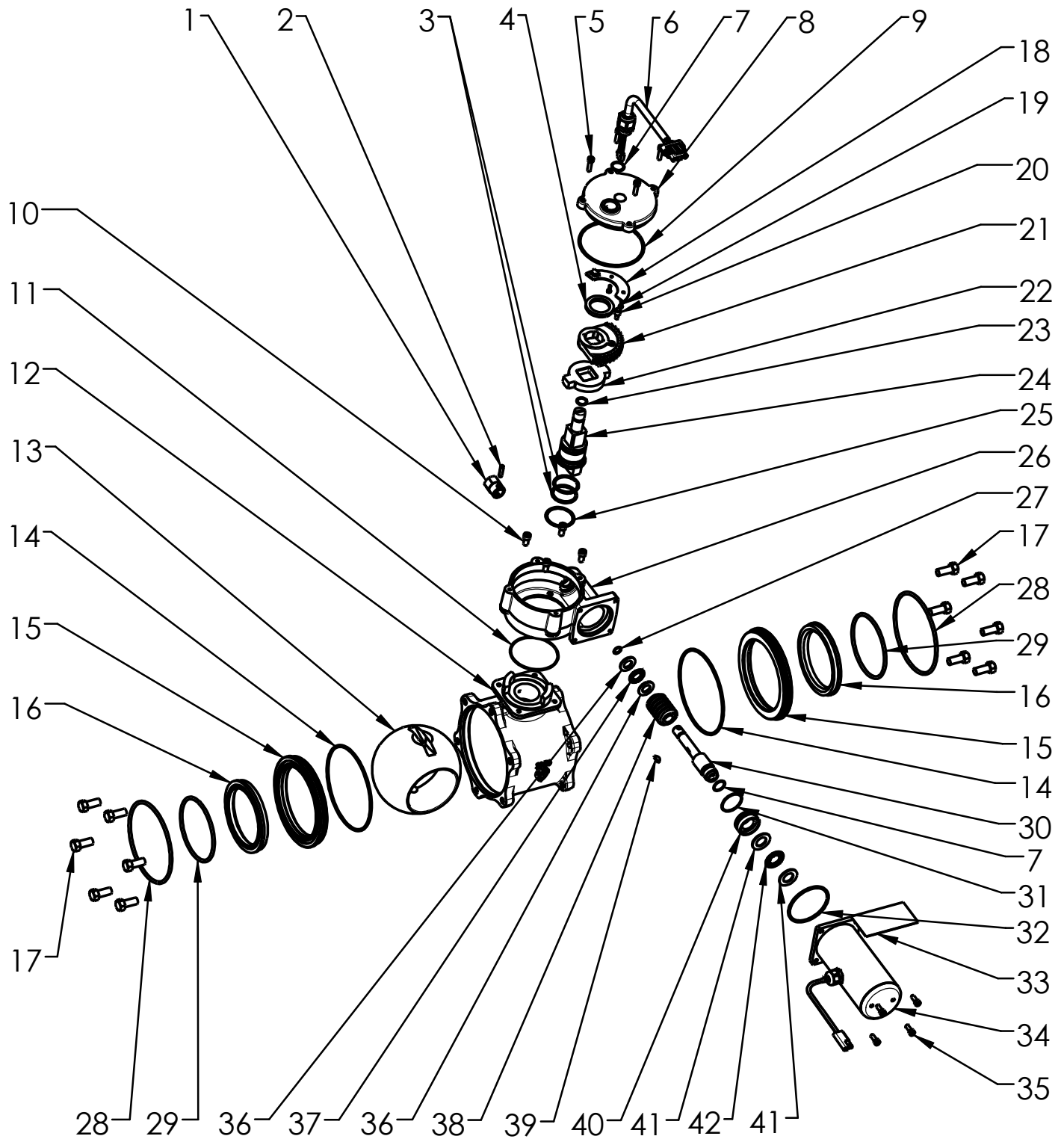
HARNESS - INTERMEDIATE
(SWITCH / INDICATOR MODULE - CONTROL MODULE)

HARNESS LENGTH		
	DIM "A"	
PART NO.	INCH	FT (REF)
36779100	12	1
36779200	36	3
36779300	60	5
36779400	96	8
36779500	120	10
36779800	300	25




ELECTRIC VALVE
CONTROL MODULE
PART NO. 81196000


OLD STYLE CONTROLLER
AND HARNESS OPTIONS FOR
2930-E AND 2940-E VALVES
(3 SCREWS TO ATTACH GEAR
CASE COVER) PLEASE CALL
CUSTOMER SERVICE

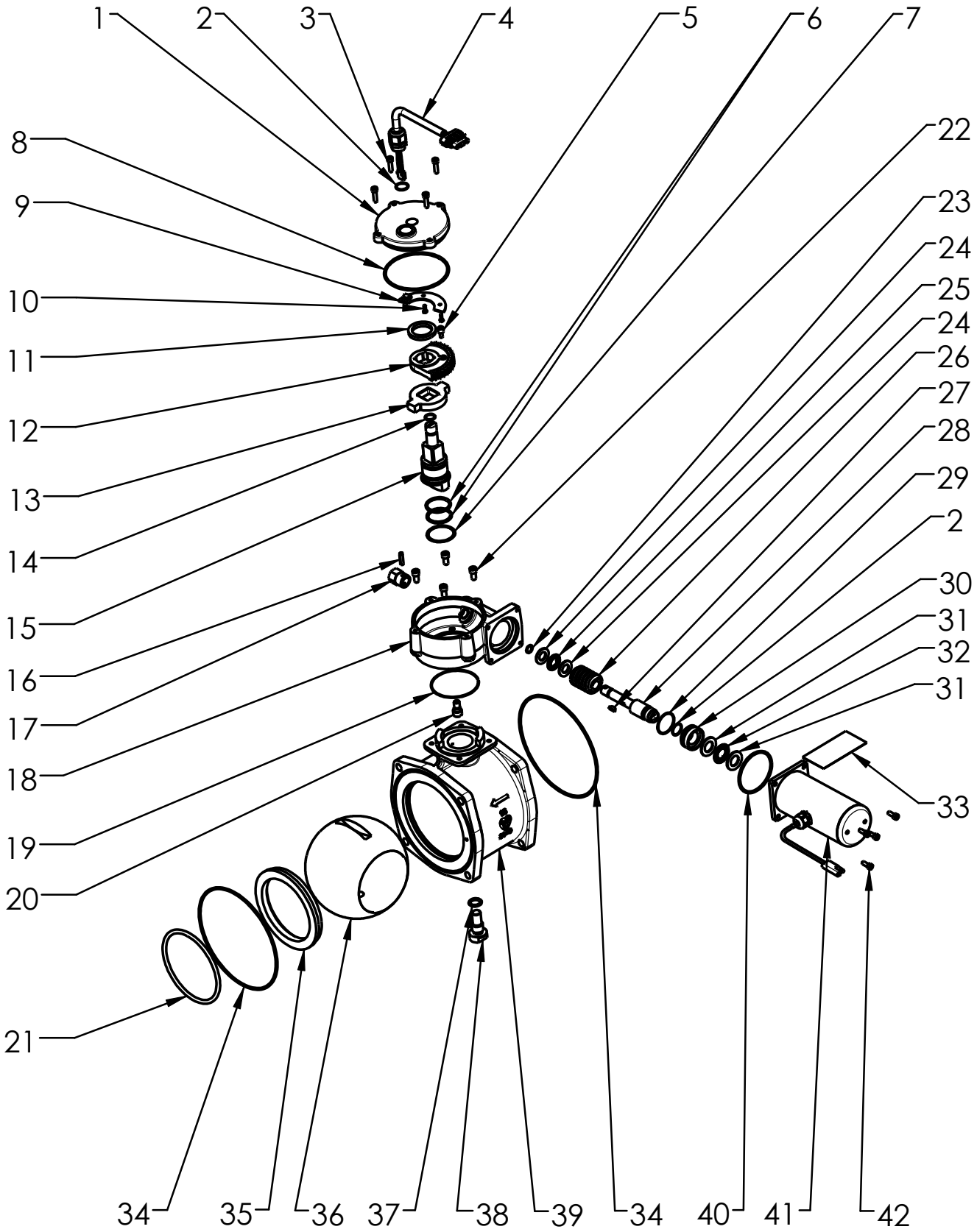


PLEASE NOTE:
 THIS IS THE CURRENT DRAWING - FOR OLD STYLE
 DRAWING (3 SCREWS TO ATTACH GEAR CASE
 COVER) PLEASE CALL CUSTOMER SERVICE

	ELKHART BRASS MFG CO., INC. ELKHART, INDIANA	
	<small>THIS DRAWING CONTAINS INFORMATION THAT IS PROPRIETARY TO ELKHART BRASS MFG CO., INC. AND MAY NOT BE USED TO PRODUCE ANY PARTS, ASSEMBLIES OR PRODUCTS DESCRIBED HEREIN WITHOUT EXPRESS WRITTEN PERMISSION</small>	
3.0" VALVE 2930-E PAGE 1 OF 2 8/6/2014	PART DRAWING	

ITEM NO.	PART NUMBER	DESCRIPTION	QTY.
1	47651001	NUT - VALVE	1
2	51224000	PIN - ROLL	1
3	57396000	O-RING	2
4	71519001	WASHER - THRUST	1
5	64085000	SCREW	4
6	36809000	HARNESS - HALL SENSOR	1
7	57295000	O-RING	2
8	23536001	COVER - GEAR CASE	1
9	57506000	O-RING	1
10	61040000	SCREW	4
11	57474000	O-RING	1
12	16990001	BODY - VALVE	1
13	17310000	BALL - VALVE	1
14	57452000	O-RING	2
15	58895001	RETAINER - VALVE SEAT	2
16	63858000	BALL VALVE SEAT	2
17	61173000	SCREW	12
18	81264000	CIRCUIT BOARD	1
19	65114000	SCREW	2
20	46051000	MAGNET	1
21	33785001	GEAR - SEGMENTAL	1
22	51815000	STOP PLATE	1
23	57321000	O-RING	1
24	65319001	SHAFT ACTUATOR	1
25	71188000	WASHER - TEFLON	1
26	23585001	GEAR CASE	1
27	57298000	O-RING	1
28	57442000	O-RING	2
29	57416000	O-RING	2
30	63946001	SHAFT - GEAR	1
31	57337000	O-RING	1
32	57318000	O-RING	1
33	25025000	DECAL - WARNING	1
34	81274001	MOTOR & COVER ASSEMBLY	1
35	61037000	SCREW	4
36	71511000	WASHER - THRUST	2
37	15698000	BEARING - THRUST	1
38	71246000	WORM GEAR	1
39	42002000	KEY	1
40	17707001	BEARING - BUSHING	1
41	71513000	WASHER - THRUST	2
42	15699000	BEARING - THRUST	1

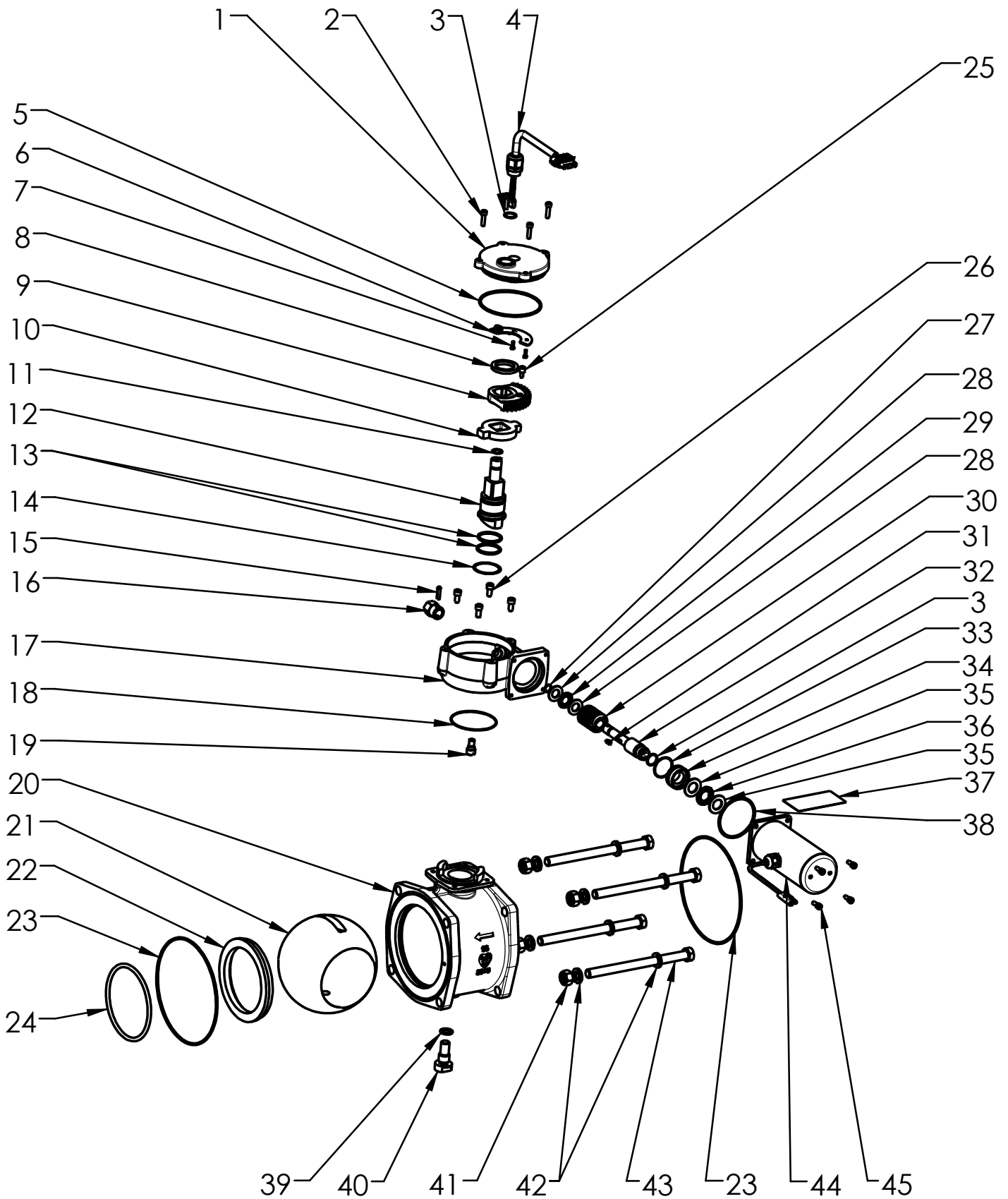
	ELKHART BRASS MFG CO., INC. ELKHART, INDIANA
THIS DRAWING CONTAINS INFORMATION THAT IS PROPRIETARY TO ELKHART BRASS MFG CO., INC. AND MAY NOT BE USED TO PRODUCE ANY PARTS, ASSEMBLIES OR PRODUCTS DESCRIBED HEREIN WITHOUT EXPRESS WRITTEN PERMISSION	
3.0" VALVE 2930-E PAGE 2 OF 2 8/6/2014	PART DRAWING B.O.M.




PLEASE NOTE:
 THIS IS THE CURRENT DRAWING - FOR OLD STYLE
 DRAWING (3 SCREWS TO ATTACH GEAR CASE
 COVER) PLEASE CALL CUSTOMER SERVICE

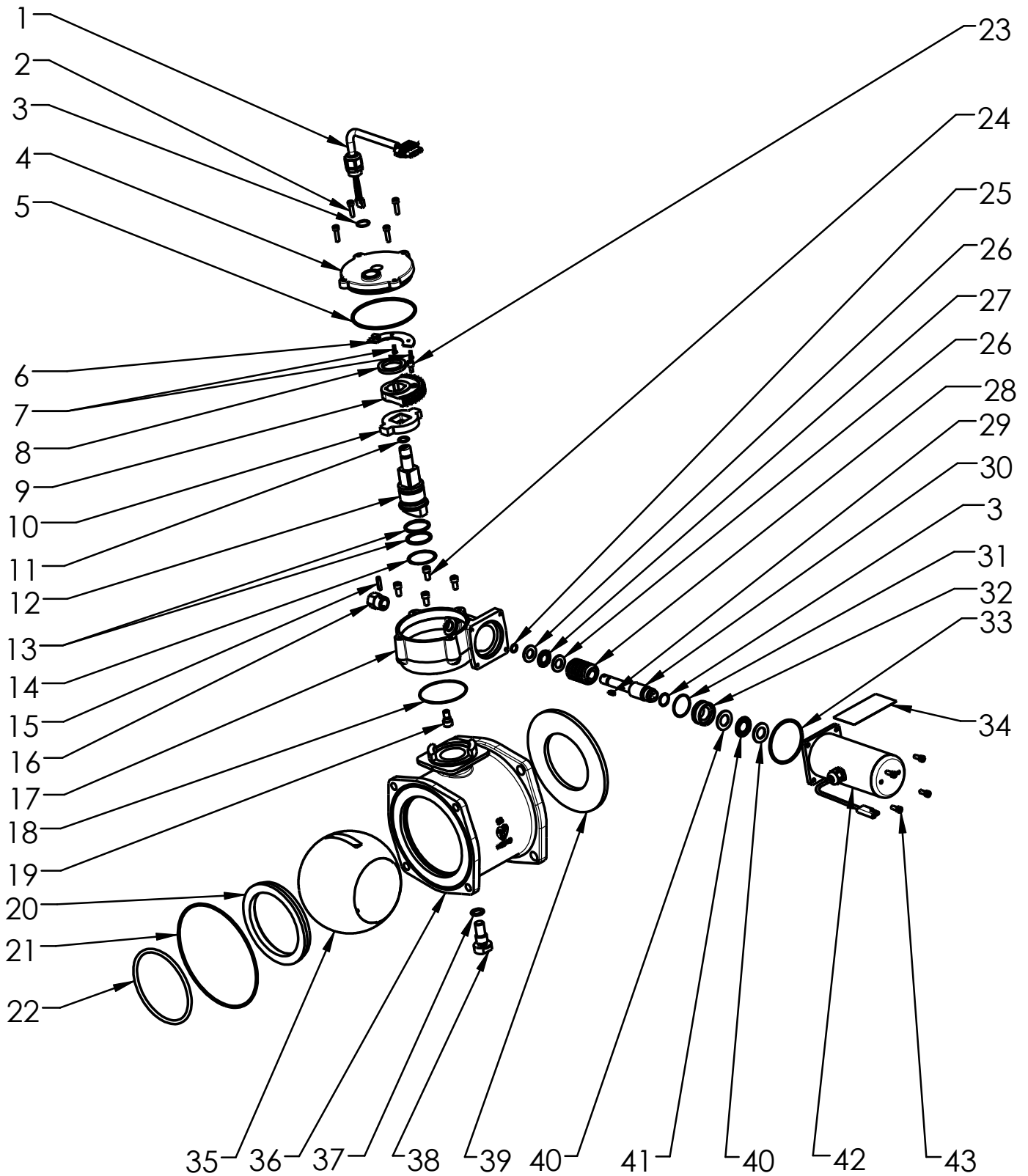
	ELKHART BRASS MFG CO., INC. ELKHART, INDIANA	
	<small>THIS DRAWING CONTAINS INFORMATION THAT IS PROPRIETARY TO ELKHART BRASS MFG CO., INC. AND MAY NOT BE USED TO PRODUCE ANY PARTS, ASSEMBLIES OR PRODUCTS DESCRIBED HEREIN WITHOUT EXPRESS WRITTEN PERMISSION</small>	
	4.0" VALVE 2940-E PAGE 1 OF 2 8/6/2014	PART DRAWING

ITEM NO.	PART NUMBER	DESCRIPTION	QTY.
1	23536001	COVER - GEAR CASE	1
2	57295000	O-RING	2
3	64085000	SCREW	4
4	36809000	HARNESS - HALL SENSOR	1
5	46051000	MAGNET	1
6	57369000	O-RING	1
7	71188000	WASHER - TEFLON	1
8	57506000	O-RING	1
9	81264000	CIRCUIT BOARD ASS'Y	1
10	65114000	SCREW	2
11	71519001	WASHER - THRUST	1
12	33785001	GEAR - SEGMENTAL	1
13	51815000	STOP PLATE	1
14	57321000	O-RING	1
15	65319001	SHAFT ACTUATOR	1
16	51224000	PIN - ROLL	1
17	47651001	NUT - VALVE	1
18	23585001	GEAR CASE	1
19	57474000	O-RING	1
20	63643001	SCREW - ACTUATOR	1
21	57396000	O-RING	2
22	61040000	SCREW	4
23	57298000	O-RING	1
24	71511000	WASHER - THRUST	2
25	15698000	BEARING - THRUST	1
26	71246000	WORM GEAR	1
27	42002000	KEY	1
28	63946001	SHAFT - GEAR	1
29	57337000	O-RING	1
30	17707001	BEARING BUSHING	1
31	71513000	WASHER - THRUST	2
32	15699000	BEARING - THRUST	1
33	25025000	DECAL - WARNING	1
34	57460000	O-RING	2
35	63860000	BALL VALVE SEAT	1
36	17317001	BALL - VALVE	1
37	57428000	O-RING	1
38	16419101	BOLT - PIVOT	1
39	17736001	BODY - VALVE	1
40	57318000	O-RING	1
41	81274001	MOTOR & COVER ASSEMBLY	1
42	61037000	SCREW	4




ITEM NO.	PART NUMBER	DESCRIPTION	QTY.
1	23536001	COVER - GEAR CASE	1
2	64085000	SCREW	4
3	57295000	O-RING	2
4	36809000	HARNESS - HALL SENSOR	1
5	57506000	O-RING	1
6	81264000	CIRCUIT BOARD ASS'Y	1
7	65114000	SCREW	2
8	71519001	WASHER - THRUST	1
9	33785001	GEAR - SEGMENTAL	1
10	51815000	STOP PLATE	1
11	57321000	O-RING	1
12	65319001	SHAFT ACTUATOR	1
13	57396000	O-RING	2
14	71188000	WASHER	1
15	51224000	PIN - ROLL	1
16	47651001	NUT - VALVE	1
17	23585001	GEAR CASE	1
18	57474000	O-RING	1
19	63643001	SCREW - ACTUATOR	1
20	17736101	BODY - VALVE	1
21	17317001	BALL - VALVE	1
22	63860000	BALL VALVE SEAT	1
23	57460000	O-RING	2
24	57369000	O-RING	1
25	46051000	MAGNET	1
26	61040000	SCREW	4
27	57298000	O-RING	1
28	71511000	WASHER - THRUST	2
29	15698000	BEARING - THRUST	1
30	71246000	WORM GEAR	1
31	42002000	KEY	1
32	63946001	SHAFT - GEAR	1
33	57337000	O-RING	1
34	17707001	BEARING BUSHING	1
35	71513000	WASHER - THRUST	2
36	15699000	BEARING - THRUST	1
37	25025000	DECAL - WARNING	1
38	57318000	O-RING	1
39	57428000	O-RING	1
40	16419101	BOLT - PIVOT	1
41	47489000	HEX NUT	4
42	71543000	WASHER-LOCK	8
43	16434000	SCREW	4
44	81274001	MOTOR & COVER ASSEMBLY	1
45	61037000	SCREW	4

	ELKHART BRASS MFG CO., INC. ELKHART, INDIANA	
	THIS DRAWING CONTAINS INFORMATION THAT IS PROPRIETARY TO ELKHART BRASS MFG CO., INC. AND MAY NOT BE USED TO PRODUCE ANY PARTS, ASSEMBLIES OR PRODUCTS DESCRIBED HEREIN WITHOUT EXPRESS WRITTEN PERMISSION	
4.0" VALVE M-2940-E PAGE 2 OF 2 8/7/2014	PART DRAWING B.O.M.	



ITEM NO.	PART NUMBER	DESCRIPTION	QTY.
1	36809000	HARNES - HALL SENSOR	1
2	64085000	SCREW	4
3	57295000	O-RING	2
4	23536001	COVER - GEAR CASE	1
5	57506000	O-RING	1
6	81264000	CIRCUIT BOARD ASS'Y	1
7	65114000	SCREW	2
8	71519001	WASHER - THRUST	1
9	33785001	GEAR - SEGMENTAL	1
10	51815000	STOP PLATE	1
11	57321000	O-RING	1
12	65319001	SHAFT ACTUATOR	1
13	57369000	O-RING	1
14	71188000	WASHER	1
15	51224000	PIN - ROLL	1
16	47651001	NUT - VALVE	1
17	23585001	GEAR CASE	1
18	57474000	O-RING	1
19	63643001	SCREW - ACTUATOR	1
20	63860000	BALL VALVE SEAT	1
21	57460000	O-RING	1
22	57396000	O-RING	2
23	46051000	MAGNET	1
24	61040000	SCREW	4
25	57298000	O-RING	1
26	71511000	WASHER - THRUST	2
27	15698000	BEARING - THRUST	1
28	71246000	WORM GEAR	1
29	42002000	KEY	1
30	63946001	SHAFT - GEAR	1
31	57337000	O-RING	1
32	17707001	BEARING BUSHING	1
33	57318000	O-RING	1
34	25025000	DECAL - WARNING	1
35	17317001	BALL - VALVE	1
36	17731001	BODY - VALVE	1
37	57428000	O-RING	1
38	16419101	BOLT - PIVOT	1
39	25076000	DISC - VALVE	1
40	71513000	WASHER - THRUST	2
41	15699000	BEARING - THRUST	1
42	81274001	MOTOR & COVER ASSEMBLY	1
43	61037000	SCREW	4

	ELKHART BRASS MFG CO., INC. ELKHART, INDIANA	
	THIS DRAWING CONTAINS INFORMATION THAT IS PROPRIETARY TO ELKHART BRASS MFG CO., INC. AND MAY NOT BE USED TO PRODUCE ANY PARTS, ASSEMBLIES OR PRODUCTS DESCRIBED HEREIN WITHOUT EXPRESS WRITTEN PERMISSION	
4.0" VALVE W-2940-E PAGE 2 OF 2 8/7/2014	PART DRAWING B.O.M.	