

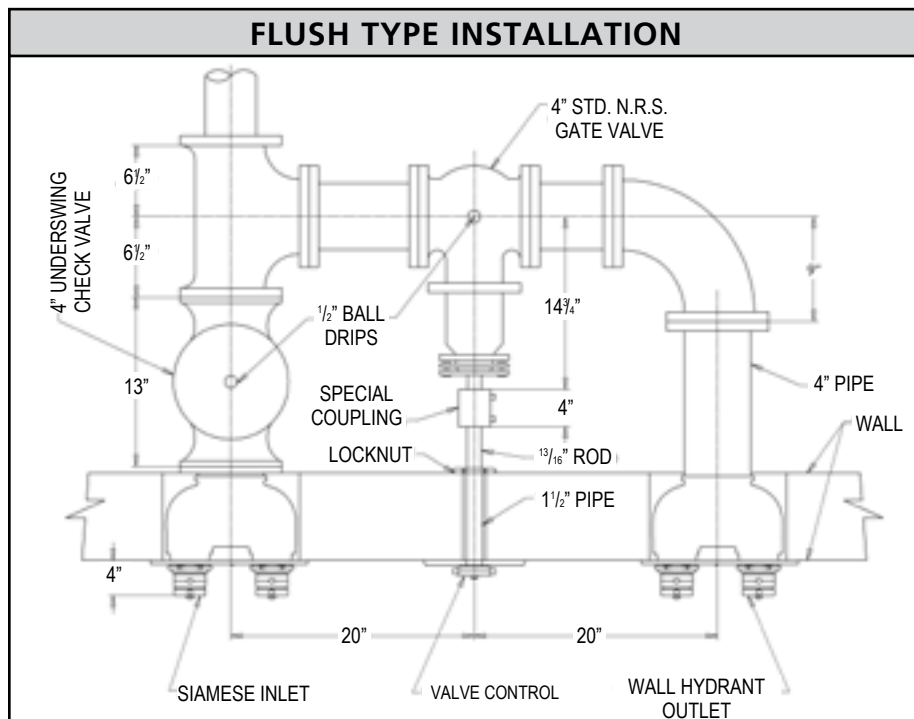


FLUSH 4-WAY INLET

INSTALLATION DIRECTION			BODY TYPE		SNOOT TYPE		MEASUREMENTS (Inches)		PSI (BAR)	CERTIFICATION	AVAILABLE ESCUTCHEON LETTERING				FINISH		Weight (Lbs.)	MODEL	FIGURE
Vertical	Horizontal	Square	Straight	90°	Clapper	Spring Check	A	B	175 (12.1)	U.L. Listed	Auto-Sprk	Dry Standpipe	Standpipe	Standpipe and Auto-Sprk	Polished Brass	Polished Chrome			
•				•	•		8	3 ⁹ / ₁₆	•	•	o	o	s	o	s	o	96	780	2
	•			•	•		8	3 ⁹ / ₁₆	•	•	o	o	s	o	s	o	96	781	3
•			•		•		5 ⁷ / ₈	3 ⁹ / ₁₆	•	•	o	o	s	o	s	o	96	782	4
	•		•		•		5 ⁷ / ₈	3 ⁹ / ₁₆	•	•	o	o	s	o	s	o	96	783	5
		•		•		•		3 ³ / ₄	•		o	o	s	o	s	o	107 ⁷ / ₈	739*	1

Key s = standard o = option
 * Can order body separately.

FLUSH TYPE INSTALLATION



ADDITIONAL INFORMATION

- Each 2½" F NHT inlet has a rated flow of 250 gpm (946 lpm).
- 6" outlet connection.
- Supplied with plugs and chains.

THREADS

Unless otherwise noted, all hose threads are NHT. See index T-13 for available optional threads.

OTHER PRODUCTS

- See page 13-14 for Flush Inlet Connections.
- For 780 and 788 sub-components specifications, see page 13-22.
- 3" NPT nipples required. Elkhart Brass does not supply.

FIGURE 1

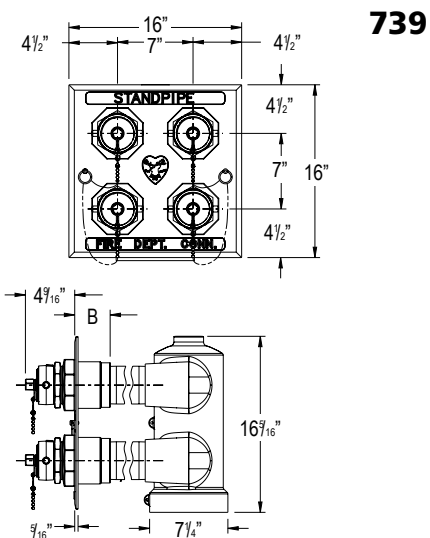


Fig. 1

FIGURE 4

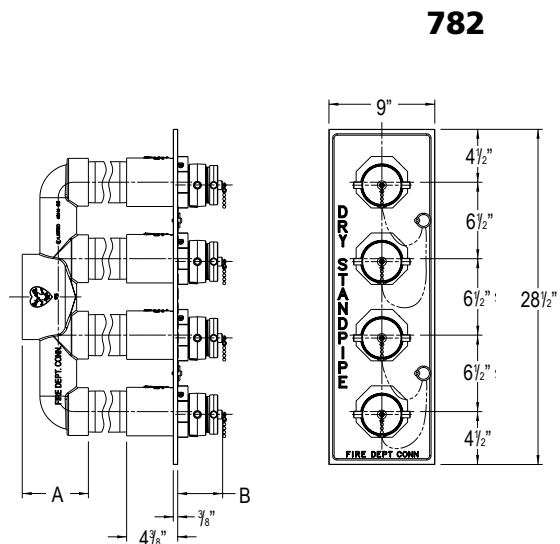


Fig. 4

FIGURE 2

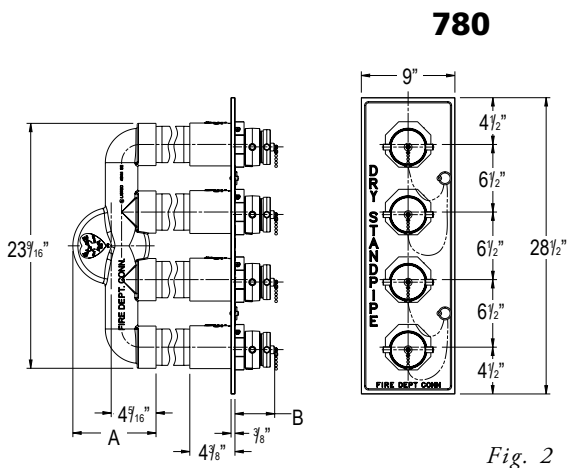


Fig. 2

FIGURE 5

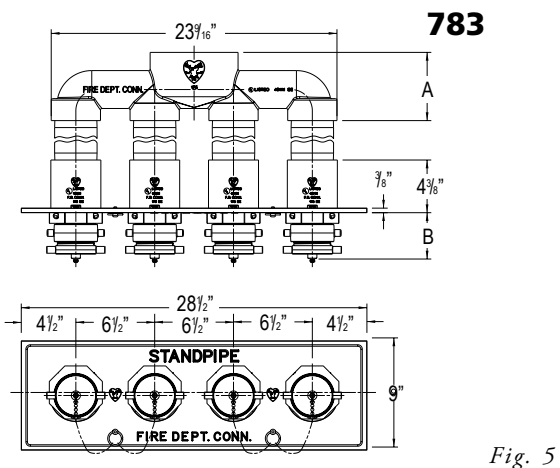


Fig. 5

FIGURE 3

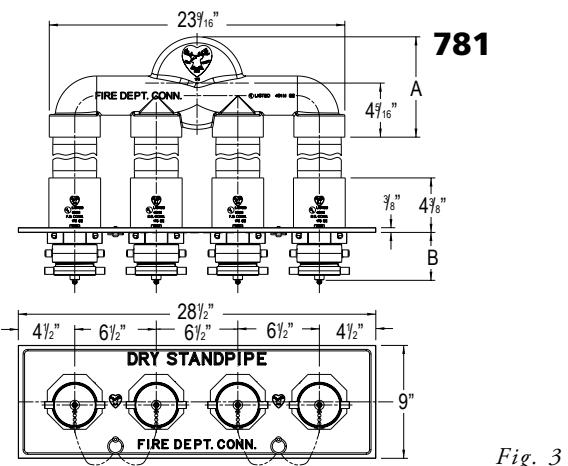


Fig. 3